

HOTĂRÂREA NR.141/2015
privind aprobarea Organigramei și a Statului de funcții ale Spitalului Județean de
Urgență Deva

CONSILIUL JUDEȚEAN HUNEDOARA;

Având în vedere expunerea de motive la proiectul de hotărâre, raportul de specialitate al compartimentelor de resort, precum și raportul comisiilor de specialitate ale Consiliului Județean;

Văzând adresa nr. 16972/20.08.2015 a managerului Spitalului Județean de Urgență Deva, înregistrată la Consiliul Județean Hunedoara cu nr. 10339/20.08.2015;

Conform prevederilor Ordinului Ministerului Sănătății nr.1470/2011 pentru aprobarea criteriilor privind angajarea și promovarea în funcții, grade și trepte profesionale a personalului contractual din unitățile sanitare publice din sectorul sanitar;

În baza prevederilor Ordinului Ministerului Sănătății nr.1358/2014 privind înființarea rețelei de genetică medicală;

Având în vedere prevederile art.182 alin.1.lit.a din Legea nr.95/2006 privind reforma în domeniul sănătății, cu modificările și completările ulterioare;

În temeiul dispozițiilor art.91 alin.1 lit. a, alin.2 lit.c și ale art.97 alin.1 din Legea administrației publice locale nr.215/2001, republicată, cu modificările și completările ulterioare ;

HOTĂRĂȘTE :

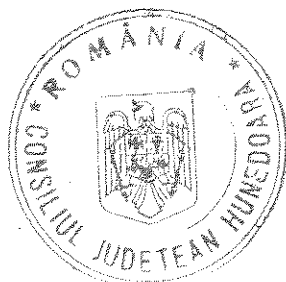
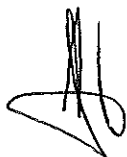
Art.1 – Aprobă Organigrama și Statul de funcții ale Spitalului Județean de Urgență Deva, conform anexei nr. 1 și anexei nr. 2 care fac parte integrantă din prezenta, începând cu data intrării în vigoare a prezentei.

Art.2 – Hotărârea nr. 100/2015 a Consiliului Județean Hunedoara se abrogă, începând cu data intrării în vigoare a prezentei.

Art.3 – Prezenta va fi dusă la îndeplinire de Spitalul Județean de Urgență Deva și va fi comunicată celor interesați prin grija Serviciului administrație publică locală, relații publice, ATOP din cadrul aparatului de specialitate al Consiliului Județean Hunedoara.

Art.4 -- Prezenta poate fi contestată în termenul și condițiile Legii nr.554/2004 a contenciosului administrativ, cu modificările și completările ulterioare.

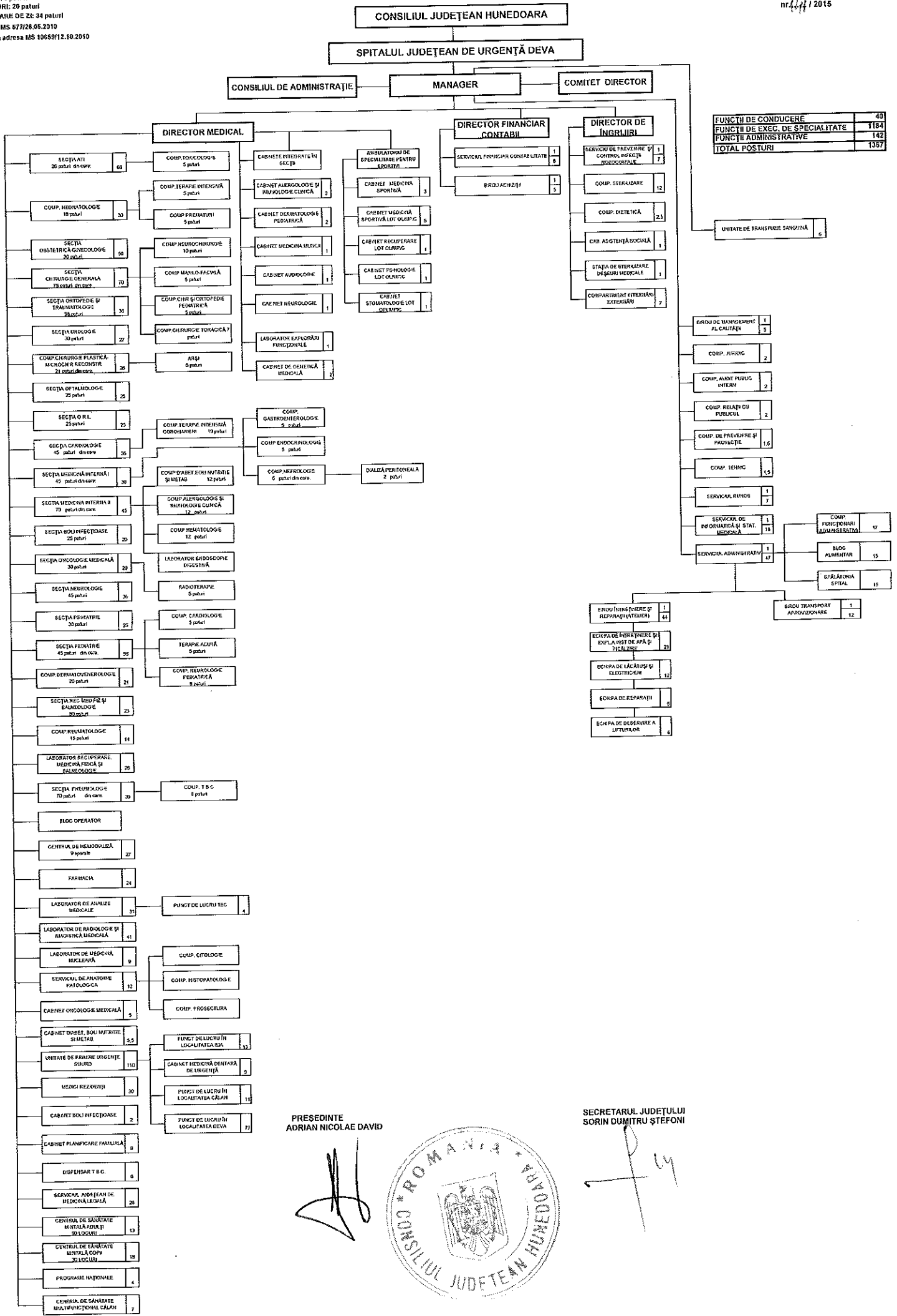
PREȘEDINTE,
Adrian Nicolae David



CONTRASEMNEAZA:
SECRETAR AL JUDEȚULUI,
Dumitru Sorin Stefoni



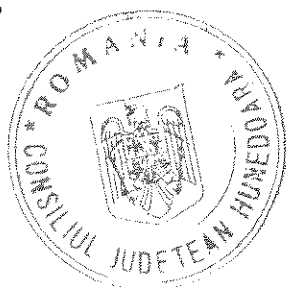
Deva, la 31 august 2015



FUNCTII DE CONDUCERE	40
FUNCTII DE EXEC. DE SPECIALITATE	1184
FUNCTII ADMINISTRATIVE	142
TOTAL POSTURI	1367

PREȘEDINTE
 ADRIAN NICOLAE DAVID

SECRETARUL JUDEȚULUI
 SORIN DUMITRU ȘTEFONI



STAT DE FUNCȚII

Nr. crt.	Structura	Funcția contractuală		Treapta profesională	Nivelul studiilor	Cuantum post	Numele și prenumele
		de conducere	de execuție				
COMITET DIRECTOR - 4 POSTURI							
1		Manager		II	S	1	LAZA CĂLIN-MIRCEA
2		Director medical		II	S	1	DEMETER IOAN
3		Director financ. contabil interimar		II	S	1	MOLDOVAN CECILIA
4		Director de îngrijiri		II	S	1	MILITARU LENUȚA CORINA
SECȚIA A.T.I. - 66 POSTURI							
Paturi: 26; din care: Secție 21; Comp. Toxicologie 5							
1		Medic primar-sef secție		II	S	1	NEAGU DANUT
2		Medic primar			S	1	CAPRARIN DIANA
3		Medic primar			S	1	KOVACS IOANA
4		Medic primar			S	1	ILIE GABRIEL FLORIN -temporar vacant
5		Medic specialist			S	1	ROSU SILVIU NICOLAE
6		Medic specialist			S	1	vacant
7		Medic primar			S	1	vacant
8		Medic primar			S	1	vacant
9		Medic primar			S	1	vacant
10		Asistent medical-sef		principal	PL	1	BODREANU CORNELIA
11		Asistent medical		principal	PL	1	BOZAN MARIA
12		Asistent medical		principal	PL	1	BROTEA MARIANA
13		Asistent medical		principal	PL	1	BUTUC CORINA
14		Asistent medical		principal	PL	1	COSTEA GEORGETA
15		Asistent medical		principal	PL	1	DARAU LUCIA IOSANA
16		Asistent medical		principal	PL	1	FARCA DANIELA
17		Asistent medical		principal	PL	1	GABOR BIANCA LIANA
18		Asistent medical		principal	PL	1	GHIERGHE ALINA VASILICA
19		Asistent medical		principal	PL	1	GROZA NINA
20		Asistent medical		principal	PL	1	JUNEA MARIANA CRISTINA
21		Asistent medical		principal	PL	1	LEMNE ENIKO
22		Asistent medical		principal	PL	1	LUDUSAN EUGENIA
23		Asistent medical		principal	PL	1	MAGDA INGRID
24		Asistent medical		principal	S	1	MELNIC TEODOR CONSTANTIN
25		Asistent medical		principal	PL	1	NEAMT DANIELA MIOARA

26		Asistent medical		principal	PL	1 ONCIUL LACRAMIOARA
27		Asistent medical		principal	PL	1 OPREAN RAMONA ELENA
28		Asistent medical		principal	S	1 PAP CARMEN
29		Asistent medical		principal	SSD	1 PASCU DIANA CECILIA
30		Asistent medical		principal	SSD	1 POESCU MONICA
31		Asistent medical		principal	S	1 PREDA FLORIANA
32		Asistent medical		principal	PL	1 RAT DORINA
33		Asistent medical		principal	PL	1 SCHLUNSKY ANA MARIA
34		Asistent medical		principal	S	1 SESOVICI SILVIA
35		Asistent medical		principal	PL	1 SMEU MIRELA AMELIA
36		Asistent medical		principal	PL	1 SOREANU BIANCA TATIANA
37		Asistent medical		principal	PL	1 STANCI LAVINIA SIMONA
38		Asistent medical		principal	PL	1 STEFAN ELENA
39		Asistent medical		principal	PL	1 TOADER GHEORGHE
40		Asistent medical		principal	PL	1 TOMUTA RAMONA OFELIA
41		Asistent medical		principal	PL	1 TURZAI SILVIA
42		Asistent medical		principal	PL	1 VALEA ILEANA
43		Asistent medical		principal	PL	1 VASILE LUMINITA
44		Asistent medical		principal	PL	1 MAROSAN SZIDONIA
45		Asistent medical			PL	1 PETCU DANIELA FELICIA
46		Asistent medical			PL	1 POP PETRONELA ELENA
47		Asistent medical			PL	1 CAZAN MARIA NICOLETA
48		Asistent medical			PL	1 PATRU ELENA ANA
49		Statistician medical		principal	M	1 ANDRONE NICOLETA DELIA
50		Asistent medical			PL	1 vacant
51		Infirmiera			G	1 ANITA ELENA IRINA
52		Infirmiera			G	1 BOCIOACA NICOLETA
53		Infirmiera			G	1 BORDEA MARCELA - DANA
54		Infirmiera			G	1 CRACIUN CARMEN MARINELA
55		Infirmiera			G	1 GERMAN VIRGINICA
56		Infirmiera			G	1 ILLE MARIA
57		Infirmiera			G	1 RADU RAMONA
58		Infirmiera			G	1 ROZNOV CARMEN
59		Infirmiera			G	1 STOICHITOIU LILIANA
60		Brancardier			G	1 PACURAR DORIN CORNEL
61		Brancardier			G	1 VULPESCU CIPRIAN
62		Ingrijitoare			G	1 ALBA ANA
63		Ingrijitoare			G	1 MIHAILESCU VERONICA
64		Ingrijitoare			G	1 MURSA SARLOTA EVA
65		Brancardier			G	1 vacant
66		Ingrijitoare			G	1 vacant

UNITATEA DE TRANSFUZIE SANGVINĂ - 6 POSTURI

1	Asistent medical	PL	1	vacant
2	Asistent medical	PL	1	vacant
3	Asistent medical	PL	1	vacant
4	Asistent medical	PL	1	vacant
5	Statistician medical	M	1	vacant
6	Ingrijitoare	G	1	vacant

COMPARTIMENT NEONATOLOGIE - 30 POSTURI

Patuti: 18; din care: Comp. Neonatologie 8; Comp. Terapie Intensiva 5; Comp. Prematurii 5

1	Medic primar	S	1	IONESCU BUFLEA MARINELA
2	Medic primar	S	1	LUCA PARASCHIVA
3	Medic primar	S	1	MATASARU ALINA HELGA
4	Medic primar	S	1	vacant
5	Asistent medical	PL	1	CUJAVA LUMINITA
6	Asistent medical	PL	1	DUMITRESCU MARIANA
7	Asistent medical	PL	1	IACOB LIGIA
8	Asistent medical	S	1	IANOSI ECATERINA
9	Asistent medical	PL	1	MITAR MARIANA
10	Asistent medical	PL	1	POP VIRGINIA MARIA
11	Asistent medical	PL	1	PRICOP ELENA
12	Asistent medical	PL	1	VRACIU RODICA
13	Asistent medical	PL	1	BOANTA ROZALIA
14	Asistent medical	PL	1	GLIGOR MIHAELA VIOLETA
15	Asistent medical	PL	1	LUNGU MARIANA
16	Asistent medical	PL	1	vacant
17	Asistent medical	PL	1	vacant
18	Asistent medical	PL	1	vacant
19	Statistician medical	M	1	vacant
20	Infirmiera	G	1	ANDONE VALERICA
21	Infirmiera	G	1	LUCACIU LILIANA GABRIELA
22	Infirmiera	G	1	MOISIUC RODICA
23	Infirmiera	G	1	NEGRILA VIOLETA LILIANA
24	Infirmiera	G	1	POIENAR ILEANA
25	Infirmiera	G	1	SINA LIOARA DANIELA
26	Infirmiera	G	1	vacant
27	Infirmiera	G	1	vacant
28	Infirmiera	G	1	vacant
29	Infirmiera	G	1	vacant
30	Ingrijitoare	G	1	vacant

SECTIA OBSTETRICA-GINECOLOGIE - 50 POSTURI

Patuti: 30; din care: Sectie 30

1	Medic primar-sef sectie		I	S	1	STANESCU ROMEO
2	Medic primar			S	1	CLEPCE SERBAN
3	Medic primar			S	1	DEMETER RODICA
4	Medic specialist			S	1	POP RALUCA BOGDANA
5	Medic primar			S	1	vacant
6	Medic primar			S	1	vacant
7	Asistent medical-sef		principal	S	1	CORDEA MARIA MIHAELA
8	Asistent medical		principal	PL	1	ATINGE CAMELIA
9	Asistent medical		principal	PL	1	BARBU MIHAELA LILIANA
10	Asistent medical		principal	PL	1	COTET ANGELA
11	Asistent medical		principal	S	1	FARCAS IULIANA CARMEN
12	Asistent medical		principal	PL	1	FOLTUT FELICIA SILVANA
13	Asistent medical		principal	PL	1	FOLTUT VIOLETA LEONTINA
14	Asistent medical		principal	PL	1	GHERMAN DANIELA
15	Asistent medical		principal	PL	1	HUIET ADRIANA MIHAELA
16	Asistent medical		principal	PL	1	MANEA SIMONA ELENA
17	Asistent medical		principal	PL	1	MUNTEANU MIOARA
18	Asistent medical		principal	PL	1	PANTILE ANA SIMONA
19	Asistent medical		principal	PL	1	RADU GEORGETA
20	Asistent medical		principal	PL	1	ROVINAR LILIANA FELICIA
21	Asistent medical		principal	PL	1	VASILIU ELENA
22	Asistent medical			PL	1	ILCA MANUELA CORINA
23	Asistent medical			PL	1	MARIAN CRISTINA
24	Asistent medical			PL	1	SCUTARU ADRIANA
25	Asistent medical			PL	1	SILASI DARIA DANIELA
26	Asistent medical			PL	1	STOIAN SIMONA
27	Moasa		principal	S	1	ARDELEAN MARIA
28	Moasa		principal	S	1	BOTA IONELA CARMEN
29	Moasa		principal	S	1	MIHAIASA RODICA
30	Moasa		principal	S	1	RAT ANCA
31	Moasa		principal	S	1	TIF DIANA EUGENIA
32	Statistician medical		principal	M	1	FURCA DANA
33	Asistent medical		principal	PL	1	vacant
34	Asistent medical			PL	1	vacant
35	Asistent medical			PL	1	vacant
36	Infirmiera			G	1	FLORICAN ANGELA
37	Infirmiera			G	1	FODOR MARIA ECATERINA
38	Infirmier			G	1	FRUNZA LUCIAN
39	Infirmiera			G	1	KOJAN MARIA
40	Infirmiera			G	1	MASNITA MARINICA

41	Infirmiera			G	1	MORAR IRINA MARIA
42	Infirmiera			G	1	NASTAC VASILICA
43	Infirmiera			G	1	SAV NICULINA
44	Infirmiera			G	1	TALAGIU ELENA COSINA
45	Infirmiera			G	1	TODERAS SIDONIA
46	Ingrijitoare			G	1	BOTICI RAMONA CRISTINA
47	Infirmiera			G	1	POPA LARISA DELIA
48	Infirmiera			G	1	vacant
49	Infirmiera			G	1	vacant
50	Infirmiera			G	1	vacant

SECTIA CHIRURGIE GENERALA - 70 POSTURI

Patuti: 75; din care: Sectie 48; Comp.Chir.Maxilo-Faciala 5; Comp.Chir.si Ortop.Ped. 5; Comp.Chir.Toracica 7

1	Medic primar-sef sectie		II	S	1	BLENDEA MARIUS VASILE
2	Medic primar			S	1	BAGACEANU POPA RAUL
3	Medic primar			S	1	FOTESCU NICOLAE RADU
4	Medic primar			S	1	GROZA LIVIU
5	Medic primar			S	1	POP CIPRIAN IOAN
6	Medic primar			S	1	RADOI VASILE
7	Medic primar			S	1	STOICA ADRIAN LEONARD
8	Medic primar			S	1	TOMA DAN CRISTIAN
9	Medic specialist			S	1	DOROGA SORIN NICOLAE
10	Medic specialist			S	1	FLUIERAS SEBASTIAN NICOLAE
11	Medic specialist			S	1	GIRLEANU LAVINIA
12	Medic specialist			S	1	STOICESCU VLADIMIR
13	Medic primar			S	1	vacant
14	Asistent medical-sef		principal	PL	1	CARABAS VIORICA
15	Asistent medical		principal	PL	1	ACHIMESCU CORINA
16	Asistent medical		principal	PL	1	BOLDURA LACRIMIOARA
17	Asistent medical		principal	PL	1	BRICIERU ANDREEA
18	Asistent medical		principal	PL	1	CIBOTARU DELIA CRISTINA
19	Asistent medical		principal	PL	1	CIOMAG CLAUDIA
20	Asistent medical		principal	PL	1	COCIS ELENA
21	Asistent medical		principal	PL	1	COCOTA LILIANA
22	Asistent medical		principal	PL	1	FILIMON VIORICA DANELA
23	Asistent medical		principal	PL	1	GAVRILUTA CAMELIA
24	Asistent medical		principal	PL	1	HUH MARIA ANISOARA
25	Asistent medical		principal	PL	1	KOVACS KATALIN
26	Asistent medical		principal	PL	1	LUNGU MARIA ADELINA
27	Asistent medical		principal	PL	1	MIHOC VIVIANA GABRIELA
28	Asistent medical		principal	PL	1	NAN LAVINIA
29	Asistent medical		principal	PL	1	NOROC NICOLETA

30		Asistent medical		principal	PL	1	PRICOB PETRONELA ADELINA
31		Asistent medical		principal	PL	1	RADU SILVIA
32		Asistent medical		principal	PL	1	STREANGA MARIA
33		Asistent medical		principal	PL	1	SUCIU CLAUDIA
34		Asistent medical		principal	PL	1	SZABO MAGDOLNA
35		Asistent medical		principal	PL	1	SZEMCSUK VIOLETA
36		Asistent medical		principal	PL	1	TODOR ADINA
37		Asistent medical		principal	PL	1	TURBUTIU RODICA MIOARA
38		Asistent medical			PL	1	BOTA RAMONA-CLAUDIA
39		Asistent medical			PL	1	GYORFI ANA IRMA
40		Asistent medical			PL	1	KOVACS ANDREEA ANGELA
41		Asistent medical			PL	1	MERA IONEL
42		Statistician medical		principal	M	1	FARGAS RAMONA TATIANA
43		Asistent medical			S	1	vacant
44		Asistent medical			PL	1	vacant
45		Asistent medical			PL	1	vacant
46		Asistent medical			PL	1	vacant
47		Asistent medical			PL	1	vacant
48		Infirmiera			G	1	BANCIU RODICA CRISTINA
49		Infirmiera			G	1	BEDEA RODICA
50		Infirmiera			G	1	CERGHEDEAN ANGELA LEONTINA
51		Infirmiera			G	1	CHICIREANU ELENA
52		Infirmiera			G	1	DUBARIU RODICA
53		Infirmiera			G	1	HANES ADRIANA VETUTA
54		Infirmiera			G	1	LITEANU LORENA
55		Infirmiera			G	1	MICLOS ILEANA
56		Infirmiera			G	1	POPA ADRIANA
57		Infirmiera			G	1	RUS MARIOARA
58		Infirmiera			G	1	SOMFELEANU VIORICA
59		Infirmiera			G	1	ZAVOIANU VICTORIA
60		Infirmiera		debutant	G	1	BOZANDEAN-OANCEA RAMONA ANDREEA
61		Ingrjiitoare			G	1	IACOB MARIANA ROZALIA
62		Ingrjiitoare			G	1	MICUTIU CRISTINA-ADINA
63		Ingrjiitoare			G	1	MOGA MARIA FLORICA
64		Brancardier			G	1	ANCA ANDREI OCTAVIAN
65		Brancardier			G	1	AVRAM MARINEL
66		Brancardier			G	1	vacant
67		Infirmiera			G	1	vacant
68		Infirmiera			G	1	vacant
69		Infirmiera			G	1	vacant
70		Infirmiera			G	1	vacant

SECTIA ORTOPEDIE SI TRAUMATOLOGIE - 36 POSTURI

Patuti: 38; din care: Sectie 38

1	Medic primar-sef sectie		II	S	1	BRINDA IOAN
2	Medic primar			S	1	PLATON ION
3	Medic primar			S	1	POP DAN VASILE
4	Medic primar			S	1	TIMAR GRIGORE
5	Medic specialist			S	1	vacant
6	Kinetoterapeut			S	1	BOZDOG BOGDAN COSMIN
7	Asistent medical-sef		principal	S	1	SZEKELY MARIANA
8	Asistent medical		principal	PL	1	BOGOS ELISABETA
9	Asistent medical		principal	PL	1	CODOBAN SIMONA
10	Asistent medical		principal	PL	1	GHERGHE MARIANA
11	Asistent medical		principal	PL	1	IACOB ELENA ANDREEA
12	Asistent medical		principal	PL	1	IANC SANDA ILEANA
13	Asistent medical		principal	PL	1	MANASIE CARMEN SOFIA
14	Asistent medical		principal	PL	1	POPESCU MIRELA
15	Asistent medical		principal	PL	1	RIZO IOAN
16	Asistent medical		principal	PL	1	ROSIAN MARCELA
17	Asistent medical		principal	PL	1	SMEU DANIEL
18	Asistent medical		principal	PL	1	STEFAN ALINA MIHAELA
19	Asistent medical		principal	PL	1	TULEA CLAUDIA
20	Asistent medical			PL	1	BRUSTUREAN CARMEN
21	Asistent medical			PL	1	BURADA MIHAELA DORICA
22	Statistician medical		principal	M	1	OLARIU MARGARETA
23	Asistent medical			PL	1	vacant
24	Infirmiera			G	1	BOITI RAMONA
25	Infirmiera			G	1	BOTA ILEANA
26	Infirmiera			G	1	COJOCARU TANIUSA
27	Infirmiera			G	1	IACOB CODRUTA ANGELA
28	Infirmiera			G	1	MARIAN MARIA
29	Infirmiera			G	1	POPA OLIVIA SIDONIA
30	Infirmiera			G	1	SABAU EMILIA OTILIA
31	Infirmiera			G	1	SUCIU VIORICA
32	Ingrjitoare			G	1	CHEREGI DANIELA GEORGETA
33	Ingrjitoare			G	1	SICOE MIHAELA
34	Brancardier			G	1	CRIHANA NICOLAE
35	Brancardier			G	1	VASIU RADU PETRU
36	Infirmiera			G	1	vacant

SECTIA UROLOGIE - 27 POSTURI

Patuti: 30; din care: Sectie 30

Medic primar-sef sectie						
1						1 RADULESCU IOAN
2	Medic primar				S	1 DAIAN ISAI DAVID
3	Medic primar				S	1 MITRANOVICI EMIL
4	Medic specialist				S	1 vacant
5	Asistent medical-sef		principal		PL	1 LUTU RODICA
6	Asistent medical		principal		PL	1 BULC LUCIA
7	Asistent medical		principal		PL	1 CISMAS ADA ELENA
8	Asistent medical		principal		PL	1 HODOR MARCELA
9	Asistent medical		principal		PL	1 HOJBOTA LAURA
10	Asistent medical		principal		PL	1 LUCA ROXANA ALINA
11	Asistent medical		principal		PL	1 PRUSUS CRISTIAN
12	Asistent medical		principal		S	1 SARKOZIANA MARIA
13	Asistent medical		principal		PL	1 SOCACIANA
14	Asistent medical		principal		PL	1 SOMAN ALINA LIVIA
15	Asistent medical		principal		PL	1 STRATICA MANUELA
16	Asistent medical				PL	1 NICOARA DANIELA-MARIA
17	Statistician medical				M	1 STOICA ADELA
18	Asistent medical				PL	1 vacant
19	Infirmiera				G	1 BOTEZATU ANICA
20	Infirmiera				G	1 DUDA ALINA
21	Infirmiera				G	1 GUIA ADELA MONICA
22	Infirmiera				G	1 HAIDUC MARIA CRISTINA
23	Infirmiera				G	1 PETER NELIA
24	Infirmiera				G	1 SELEJAN MARIANA DANIELA
25	Infirmiera				G	1 vacant
26	Ingrijitoare				G	1 FLOREA IOANA
27	Brancardier				G	1 vacant

COMPARTIMENT CHIRURGIE PLASTICA - MICROCHIRURGIE - 28 POSTURI

Patuti: 21; din care: Compartiment 16; Arsi 5

1	Medic primar				S	1 CLEPCE CORINA CRISTINA
2	Medic primar				S	1 LUCULESCU PAULA
3	Medic specialist				S	1 vacant
4	Asistent medical		principal		PL	1 ANCA ALINA
5	Asistent medical		principal		PL	1 BOTEZAT CECILIA
6	Asistent medical		principal		PL	1 CAPATAN MIHAELA
7	Asistent medical		principal		PL	1 DEACONU OLIMPIA
8	Asistent medical		principal		PL	1 FLOREA CAMELIA
9	Asistent medical		principal		PL	1 FLORESCU MARIANA
10	Asistent medical		principal		PL	1 GHIBU AURICA
11	Asistent medical		principal		S	1 LUCA CRISTINA TITIANA
12	Asistent medical		principal		PL	1 TITEL LENUTA

13		Asistent medical		principal	PL	1	URSU NICOLITA
14		Statistician medical		principal	M	1	VERES-MORARU NICOLETA-IULIANA
15		Asistent medical			PL	1	vacant
16		Asistent medical			PL	1	vacant
17		Asistent medical			PL	1	vacant
18		Infirmiera			G	1	BALUTA MARIA
19		Infirmiera			G	1	JESCU VIORICA
20		Infirmiera			G	1	MANICAN GEANINA DACIANA
21		Infirmiera			G	1	MIELUT MARIANA LENUTA
22		Infirmiera			G	1	ORDEAN GHEORGHITA
23		Infirmiera			G	1	PAVEL DORINA-MARIANA
24		Infirmiera			G	1	vacant
25		Infirmiera			G	1	vacant
26		Infirmiera			G	1	vacant
27		Infirmiera			G	1	vacant
28		Infirmiera			G	1	vacant

SECTIA OFTALMOLOGIE - 25 POSTURI

Paturi: 25; din care: Sectie 25

1		Medic primar-sef sectie		I	S	1	MICLAUS DIANA
2		Medic primar			S	1	ANGELESCU LACRIMA CARMEN
3		Medic primar			S	1	ANGELESCU REMUS
4		Medic primar			S	1	CABA CORINA
5		Medic primar			S	1	FEIER CORINA MONICA MARIA
6		Medic specialist			S	1	vacant
7		Asistent medical-sef		principal	PL	1	HAJDU ILDIKO HRIETTE
8		Asistent medical		principal	PL	1	BOBAILA CLAUDIA ELENA
9		Asistent medical		principal	PL	1	BODEA NICOLETA LUMINITA
10		Asistent medical		principal	PL	1	BUMBU MIHAELA ILEANA
11		Asistent medical		principal	PL	1	DORNEANU ANCA MARIA
12		Asistent medical		principal	PL	1	DUBARIU RAMONA
13		Asistent medical		principal	PL	1	HAJDU ADRIANA
14		Asistent medical		principal	PL	1	KARSAI RAMONA
15		Asistent medical		principal	PL	1	MOLDOVAN TEODORA MARIA
16		Asistent medical		principal	PL	1	MUNTEANU VIOLETA FLORICA
17		Asistent medical		principal	PL	1	PETRUSE GABRIELA SIMONA
18		Statistician medical			M	1	TARLEA LUIZA TUDORA
19		Asistent medical		principal	PL	1	vacant
20		Asistent medical			PL	1	vacant
21		Infirmiera			G	1	DUBAR LUCIA
22		Infirmiera			G	1	POPA MARIOARA
23		Infirmiera			G	1	STOIA FELICIA CORNELIA
24		Infirmiera			G	1	TOMUTA CRISTINA
25		Infirmiera			G	1	vacant

SECTIA ORL - 23 POSTURI

Paturi: 25; din care: Sectie 25

Medic primar-sef sectie		I		S	
1		1	MARCUS ANTONETA GRATIELA		
2	Medic primar	1	BOGDAN ADRIAN		
3	Medic specialist				
4	Medic primar	1	BALGRADEAN LUMINITA MARIA		
5	Medic primar	1	vacant		
6	Asistent medical-sef	1	STANCULESCU FLORICA MARINELA		
7	Asistent medical	1	BOTA IRINA	PL	
8	Asistent medical	1	CIOBOTA CONSUELA	S	
9	Asistent medical	1	ERCSI EMESE	PL	
10	Asistent medical	1	FRENTONI CLAUDIA	S	
11	Asistent medical	1	MELNIC DOINA	S	
12	Asistent medical	1	SZATMARI BRIGITTA	S	
13	Asistent medical	1	VARDEA IONELA	PL	
14	Asistent medical	1	HORVATH AMALIA CARMEN	PL	
15	Asistent medical	1	ROTARU MONICA	PL	
16	Asistent medical	1	vacant		
17	Statistician medical			M	
18	Infirmiera			G	
19	Infirmiera			G	
20	Infirmiera			G	
21	Infirmiera			G	
22	Infirmiera			G	
23	Infirmiera			G	

SECTIA CARDIOLOGIE - 35 POSTURI

Paturi: 45; din care: Sectie 35; Comp. Terapie Intensiva Coronarieni: 10

Medic primar-sef sectie		II		S	
1		1	BASARAB GHEORGHE VASILE		
2	Medic primar	1	BLAJ CONSTANTIN SABIN	S	
3	Medic primar			S	
4	Medic specialist			S	
5	Medic primar	1	STOICA DIANA ANDREEA	S	
6	Medic specialist	1	vacant	S	
7	Asistent medical-sef	1	SANDOR AURORA MARIANA	S	
8	Asistent medical	1	ACASANDREI ENIKO	PL	
9	Asistent medical	1	ALMASAN DIANA NICOLETA	PL	
10	Asistent medical	1	BARBU SIMONA VIORICA	PL	
11	Asistent medical	1	BOLD LUMINITA MONICA	PL	
12	Asistent medical	1	CIBIAN CARMEN	PL	
13	Asistent medical	1	CIUCA LIANA	PL	
14	Asistent medical	1	CORNEA GEORGETA MIRELA	PL	
15	Asistent medical	1	DRAIA DANIELA MARIANA	PL	

16		Asistent medical	principal	PL	1	FOGOROSI CARMEN SOFIA
17		Asistent medical	principal	PL	1	MADASA AURELIA
18		Asistent medical	principal	PL	1	MALEA CLAUDIA LAVINIA
19		Asistent medical	principal	PL	1	MIGNEA MECIKOWSKI CRISTINA
20		Asistent medical	principal	PL	1	NANDREA ILDIKO
21		Asistent medical	principal	S	1	ROMAN KATALIN
22		Asistent medical	principal	PL	1	VISAN SIMONA LOREDANA
23		Asistent medical		PL	1	LUNG CRISTINA LOREDANA
24		Statistician medical		M	1	SERESTELY LEVENTE SZABOLCS
25		Infirmiera		G	1	ANDRICA MARIANA ANGELICA
26		Infirmiera		G	1	ANGELESCU LAURA
27		Infirmiera		G	1	DOBREA ECATERINA
28		Infirmiera		G	1	PEPTAN IOANA
29		Infirmiera		G	1	STIOLNA DORINA NICOLETA
30		Ingrijitoare		G	1	MOLDOVAN CARMEN
31		Ingrijitoare		G	1	MUSESCU ILEANA
32		Infirmiera		G	1	vacant
33		Infirmiera		G	1	vacant
34		Infirmiera		G	1	vacant
35		Infirmiera		G	1	vacant

SECTIA MEDICINA INTERNA 1 - 38 POSTURI

Patuni: 45; din care: Sectie 30; Comp.Endocrin.5;Comp.Nefr. 5;Comp.gastroent 5

1		Medic primar-sef sectie del.	II	S	1	BADAU VALENTIN TEODOR
2		Medic primar		S	1	BLENDEA DANIELA
3		Medic primar		S	1	BUDURA RUSU ROMANA
4		Medic primar		S	1	LUPSE DIANA
5		Medic primar		S	1	NEGRILA MIHAELA CECILIA
6		Medic primar		S	1	vacant temporar
7		Medic primar		S	1	vacant
8		Medic specialist		S	1	vacant
9		Asistent medical-sef	principal	PL	1	IOANI SIMONA
10		Asistent medical	principal	PL	1	BALEA NICOLETA LUMINITA
11		Asistent medical	principal	PL	1	CHELARIU CRISTINA
12		Asistent medical	principal	PL	1	CRANIC MIHAELA
13		Asistent medical	principal	PL	1	GABOR ANGELA
14		Asistent medical	principal	PL	1	GIURGIU FLORINELA MARIA
15		Asistent medical	principal	PL	1	KOVALCSIK KLARA
16		Asistent medical	principal	PL	1	LUPULESCU SIMONA MARIA
17		Asistent medical	principal	PL	1	MARGINEAN CLAUDIA IULIANA
18		Asistent medical	principal	PL	1	MOTORGA GEORGETA
19		Asistent medical	principal	PL	1	NEGRU ALINA MARIA

20		Asistent medical	principal	S	1	PETRUSE ALINA LOREDANA
21		Asistent medical	principal	PL	1	POPA ANCUTA ADELINA
22		Asistent medical	principal	PL	1	SERBAN MARIANA IULIANA
23		Asistent medical	principal	S	1	SOLOMON MIHAELA
24		Asistent medical		PL	1	BAL SABINA
25		Asistent medical		PL	1	DANCILA LACRAMIOARA LENUTA
26		Asistent medical		PL	1	MALAIU ANA MARIA
27		Statistician medical		M	1	ZUGRAVU NICOLETA-DANIELA
28		Asistent medical	principal	PL	1	vacant
29		Asistent medical		PL	1	vacant
30		Asistent medical		PL	1	vacant
31		Infirmiera		G	1	DALOG CORNELIA
32		Infirmiera		G	1	OLARASU GABRIELA
33		Infirmiera		G	1	PETRESC MIHAELA ANISOARA
34		Infirmiera		G	1	PETRUT ELENA
35		Infirmiera		G	1	VANCEA ILEANA
36		Infirmiera		G	1	VARGA EMILIA GEORGETA
37		Ingrjiitoare		G	1	ALBA RAIMONA
38		Ingrjiitoare		G	1	vacant

SECTIA MEDICINA INTERNA II - 45 POSTURI

Paturi: 70; din care: Sectie 34; Comp.Alergologie si Imunol. Clinica 12; Comp.Hematologie 12; Comp.Diab.zaharat,Nutritie si Boii Met.12; Lab.endoscopie digestiva

1		Medic primar-sef sectie del.	II	S	1	RAD LIVIU
2		Medic primar		S	1	AVRAM RODICA IOANA
3		Medic primar		S	1	GLODEAN ONESC BIANCA
4		Medic primar		S	1	MAGHERU DAN ADRIAN
5		Medic primar		S	1	ROMAN TANIA
6		Medic primar		S	1	vacant temporar
7		Medic primar		S	1	vacant
8		Medic primar		S	1	vacant
9		Asistent medical-sef	principal	PL	1	CLEJ EMILIA
10		Asistent medical	principal	PL	1	ALBA ALINA
11		Asistent medical	principal	S	1	AMBROSEI ELENA CRISTINA
12		Asistent medical	principal	PL	1	BOZAN CARMEN MIHAELA
13		Asistent medical	principal	PL	1	BOZESAN IOANA
14		Asistent medical	principal	PL	1	BUTINCU BIANCA VANESA
15		Asistent medical	principal	S	1	CHERECHES EVA
16		Asistent medical	principal	PL	1	COTIUGA SIMONA
17		Asistent medical	principal	S	1	DRAGOS ANTONELA MARIA
18		Asistent medical	principal	S	1	FRENTIU FLORINA
19		Asistent medical	principal	PL	1	HAIUC MIRELA
20		Asistent medical	principal	S	1	KASLER MONICA
21		Asistent medical	principal	PL	1	PRUNA EMILIA DOAGA
22		Asistent medical	principal	PL	1	PURDA MIHAELA

23		Asistent medical	principal	S	1	PURTUC OLIVIA CLAUDIA
24		Asistent medical	principal	PL	1	STANCIULESCU LUMINITA
25		Asistent medical		S	1	BARABAS IULIANA CLAUDIA
26		Asistent medical		PL	1	COTOARA CRISTINA-ELENA
27		Asistent medical		PL	1	FLOREA DANIELA
28		Asistent medical		PL	1	HERBEI ALEXANDRA IOANA
29		Asistent medical		PL	1	MANATIE EVA MARIA
30		Asistent medical		PL	1	MIREA CRISTINA RAMONA
31		Asistent medical		PL	1	VLAICU OANA EMANUELA
32		Statistician medical	principal	M	1	SOANCA ADRIANA
33		Statistician medical		M	1	MOLDOVAN RODICA GABRIELA
34		Statistician medical		M	1	vacant
35		Infirmiera		G	1	ALBA MARIANA LENUTA
36		Infirmiera		G	1	BALAN MARIA
37		Infirmiera		G	1	CAINANT LUCICA MINODORA
38		Infirmiera		G	1	DOBRA ADINA
39		Infirmiera		G	1	ADAM ALINA-ELENA
40		Infirmiera		G	1	TAGARTA ELENA
41		Ingrjiitoare		G	1	JURCA CRISTINA DANIELA
42		Ingrjiitoare		G	1	RENGHEA MARIANA
43		Ingrjiitoare		G	1	RESIGA ILEANA
44		Infirmiera		G	1	vacant
45		Brancardier		G	1	vacant

SECTIA BOLI INFECTIOASE - 20 POSTURI

Paturi: 25, din care: Sectie 25

1	Medic primar-sef sectie		I	S	1	IONICIUC ANTOANELA DANIELA
2	Medic primar			S	1	DANDESCU MARIA
3	Medic primar			S	1	vacant
4	Asistent medical-sef		principal	PL	1	PETRESC SILVIA
5	Asistent medical		principal	PL	1	BERINDEIE MIHAELA
6	Asistent medical		principal	PL	1	COSTEA IULIANA MIRELA
7	Asistent medical		principal	PL	1	CRISAN ALEXANDRA MIOARA
8	Asistent medical		principal	S	1	LOGOJAN ALINA VIOLETA
9	Asistent medical		principal	S	1	NELEGA SORINA LIGELA
10	Asistent medical		principal	PL	1	SZASZ IONCA
11	Asistent medical			PL	1	LUP GAROFITA LENUTA
12	Asistent medical		principal	PL	1	vacant
13	Statistician medical		principal	M	1	GLOGOVETEAN MONIKA
14	Infirmiera			G	1	BALEA IRINA
15	Infirmiera			G	1	CHIPERI DORINELA
16	Infirmiera			G	1	LUCANIUC REGHINA
17	Infirmiera			G	1	PINTEA MARIA
18	Infirmiera			G	1	STRATICA VASILICA
19	Infirmiera			G	1	STEF ELENA LIOARA
20	Brancardier			G	1	CANDLER SORIN OVIDIU

SECTIA ONCOLOGIE MEDICALA - 29 POSTURI

Patuti: 30; din care: Sectie 25; Radioterapie 5

1	Medic primar-sef sectie del.		I	S	1	RUGEA TIBERIU VALERIU
2	Medic specialist			S	1	POPA ALINA MAURA
3	Medic specialist			S	1	vacant
4	Medic specialist			S	1	vacant
5	Psiholog		principal	S	1	BOTAS DANIELA
6	Asistent medical-sef		principal	S	1	LAZEA MIOARA AURA
7	Asistent medical		principal	PL	1	GABOR DORINA
8	Asistent medical		principal	PL	1	HERBEI SIMONA RODICA
9	Asistent medical		principal	PL	1	IRIMIE EMILIA MARIA
10	Asistent medical		principal	PL	1	IVAN DANIELA
11	Asistent medical		principal	PL	1	IMALAESTEAN IONICA
12	Asistent medical		principal	PL	1	MARTIN LENUTA
13	Asistent medical		principal	PL	1	MORARU LAURA
14	Asistent medical		principal	PL	1	MOTOC FLORINA
15	Asistent medical		principal	SSD	1	MUNTEANU MARIANA ADRIANA
16	Asistent medical		principal	PL	1	SILASI DELIA CARMEN
17	Asistent medical		principal	PL	1	VINCZE MARIA VIORICA
18	Asistent medical			PL	1	CORNEA CONSTANTA GABRIELA
19	Asistent medical			PL	1	NEAGOE ALEXANDRINA
20	Statistician medical		principal	M	1	LAZEA RAUL
21	Infirmiera			G	1	CAZU HOGMAN MONICA ELENA
22	Infirmiera			G	1	CIORTEA GABRIELA
23	Infirmiera			G	1	PLIOT MIHAELA ELENA
24	Infirmiera			G	1	RADU MITA
25	Infirmiera			G	1	SACOTA ANGELICA
26	Infirmiera			G	1	SORTAN TRAIAN
27	Infirmiera			G	1	TEAMPAU ELENA
28	Ingrjiitoare			G	1	ILUTA EUGENIA GEORGETA
29	Brancardier			G	1	CHEREGII IOAN DANIEL

SECTIA NEUROLOGIE - 36 POSTURI

Patuti: 45; din care: Sectie 45

1	Medic primar-sef sectie		II	S	1	MIHU ANCA
2	Medic primar			S	1	BERTALAN LAVINIA
3	Medic primar			S	1	RUSAN ELENA
4	Medic primar			S	1	SAMOILESCU LUCICA
5	Medic primar			S	1	TANU ELENA GABRIELA
6	Medic specialist			S	1	vacant
7	Kinetoterapeut principal			S	1	OPREAN ILDICO
8	Asistent medical-sef		principal	PL	1	CHIFOR DANIELA
9	Asistent medical		principal	PL	1	ANGHELINA GEORGIANA MANUELA
10	Asistent medical		principal	PL	1	BODAC VIORICA AURICA
11	Asistent medical		principal	PL	1	CORNE GABRIELA

12		Asistent medical		principal	PL	1	DRAGOMIR ADINA CLAUDIA
13		Asistent medical		principal	PL	1	MAGDA IRINA MARIA
14		Asistent medical		principal	PL	1	MAGDA MARANATA
15		Asistent medical		principal	PL	1	NEGREA ADRIANA ROXANA
16		Asistent medical		principal	PL	1	SATALAN ELENA CRISTINA
17		Asistent medical		principal	PL	1	SIRB MIHAELA DANIELA
18		Asistent medical		principal	S	1	SOCACI CLAUDIA DANIELA
19		Asistent medical			PL	1	BOANCA EMILIA-ALINA
20		Asistent medical			PL	1	PASCU ELISABETA ALINA
21		Asistent medical			PL	1	SIMINA LUMINITA MIHAELA
22		Asistent medical			PL	1	vacant
23		Statistician medical		principal	M	1	MOISE ANISOARA
24		Infirmiera			G	1	ANTON MARIA
25		Infirmiera			G	1	DARADICS ELVIRA
26		Infirmier			G	1	DARADICS IULIU
27		Infirmiera			G	1	JELER SORINA
28		Infirmiera			G	1	JUDE CORINA
29		Infirmiera			G	1	POPA TATIANA
30		Infirmiera			G	1	SOIMAREANU CLAUDIA
31		Infirmiera			G	1	VADEAN RODICA
32		Infirmiera			G	1	CERB CLAUDIA IONELA
33		Brancardier			G	1	DODA MARIUS CRISTINEL
34		Brancardier			G	1	LAZAR DANUT
35		Infirmiera			G	1	vacant
36		Infirmiera			G	1	vacant

SECTIA PSIHIATRIE - 25 POSTURI/

Paturi: 30; din care: Sectie 30

1	Medic primar-sef sectie		I	S	1	CORDEA TRAIAN
2	Medic primar			S	1	IOEGAR MONICA VENUSA
3	Medic primar			S	1	STANCI LUIGYA CLAUDIA
4	Medic specialist			S	1	vacant
5	Psiholog principal			S	1	FLOREA CLAUDIA SIMONA
6	Psiholog principal			S	1	GRAUR ADRIANA
7	Asistent medical-sef		principal	S	1	LOLEA ELENA NICOLETA
8	Asistent medical		principal	PL	1	COSMA LIDIA
9	Asistent medical		principal	PL	1	DRAGHICI NADIA MIHAELA
10	Asistent medical		principal	S	1	FILCU MIRELA VIOLETA
11	Asistent medical		principal	PL	1	GAT VOICHTA CONSUELA
12	Asistent medical		principal	S	1	GAVRILA LAURENTIA
13	Asistent medical		principal	PL	1	KORB LUCIANA MELANIA
14	Asistent medical		principal	SSD	1	MEGYERI MIHAELA
15	Asistent medical		principal	PL	1	TERTECI ADINA

16		Asistent medical		PL	1	MIHU CLAUDIA FLORINA
17		Statistician medical		M	1	PACURAR ANA NICOLETA
18		Asistent medical	principal	S	1	vacant
19		Asistent medical	principal	S	1	vacant
20		Infirmiera		G	1	BUDOIU-OANCEA ANAMARIA
21		Infirmiera		G	1	CAPATINA MARINELA FLORINA
22		Infirmiera		G	1	CIMPEAN STEFANICA
23		Infirmiera		G	1	CORNEA DOJNITA
24		Infirmiera		G	1	VARADI COSMINA
25		Infirmiera		G	1	STAFIE MIHAELA

SECTIA PEDIATRIE - 55 POSTURI

Paturi: 45; din care: Sectie Acuta 5; Comp. Cardiologie 5; Comp. Neurologie Pediatrica 5

1		Medic primar-sef sectie		II		1	PAUL MIHAELA
2		Medic primar				1	BAICEANU ADRIANA
3		Medic primar				1	BALEA IOANA MADALINA
4		Medic primar				1	OLTEAN SIMONA
5		Medic primar				1	POP LUMINITA
6		Medic primar				1	ROMAN EVA LAURA
7		Medic primar				1	SAVU MARIA
8		Medic specialist				1	JEFLEA DANIELA
9		Medic primar				1	vacant
10		Medic primar				1	vacant
11		Asistent social				1	vacant
12		Asistent medical-sef	principal			1	NAGY RENATA
13		Asistent medical	principal			1	ANDRONIC LILIANA
14		Asistent medical	principal			1	BARA ILDIKO
15		Asistent medical	principal			1	CIHODARU DIANA GABRIELA
16		Asistent medical	principal			1	FILIP ADINA
17		Asistent medical	principal			1	GORCEA ELENA DANIELA
18		Asistent medical	principal			1	GYENGE ILDIKO
19		Asistent medical	principal			1	IOSEPH SARA
20		Asistent medical	principal			1	MIRAUTA GABRIELA
21		Asistent medical	principal			1	NICOLESCU IOANA
22		Asistent medical	principal			1	PAPP IUDIT RITA
23		Asistent medical	principal			1	PARPALEA IOANA MIRELA
24		Asistent medical	principal			1	PATRICHE ELENA LAVINIA
25		Asistent medical	principal			1	PLETER MARIA ELENA
26		Asistent medical	principal			1	RADUICA DANIELA
27		Asistent medical	principal			1	SLABU DORINA FELICIA
28		Asistent medical	principal			1	STEF ADRIANA
29		Asistent medical	principal			1	STOICA MELANIA
30		Asistent medical	principal			1	URS AURELIA
31		Asistent medical	principal			1	VLADU MARIA
32		Asistent medical				1	BENTEU CRISTINA
33		Asistent medical				1	CIOCAN MARIOARA

34		Asistent medical			S	1	MARIAN CORNELIA ELENA
35		Asistent medical			PL	1	MOGA ELENA RUXANDRA
36		Asistent medical			PL	1	SANDOR ALEXANDRA ELENA
37		Statistician medical			M	1	DEMIAN RAZVAN OVIDIU
38		Asistent medical		principal	PL	1	vacant
39		Asistent medical			PL	1	vacant
40		Infirmiera			G	1	ALBA CAMELIA VIOLETA
41		Infirmiera			G	1	DUMITRIU CRISTINA
42		Infirmiera			G	1	GHERMAN MARGHETI
43		Infirmiera			G	1	GULEAS ROZALIA
44		Infirmiera			G	1	NISTOR PANSELA
45		Infirmiera			G	1	PIRVA ELENA
46		Infirmiera			G	1	RADU DOINA MARINICA
47		Infirmiera			G	1	VIERU LILIANA
48		Ingrjititoare			G	1	CACEU EDIT
49		Ingrjititoare			G	1	DAMIAN GEORGETA
50		Ingrjititoare			G	1	PETERLECEAN ANA MARIA
51		Ingrjititoare			G	1	POPA OLGA
52		Ingrjititoare			G	1	VLAD IONELA
53		Infirmiera			G	1	vacant
54		Infirmiera			G	1	vacant
55		Infirmiera			G	1	vacant

COMPARTIMENT DERMATOVENEROLOGIE - 21 POSTURI

Patuti: 20; din care: Compartiment: 20

1		Medic primar			S	1	FOLEA MIRELA FLORINA
2		Medic primar			S	1	SELAR ADINA ZENAIIDA
3		Medic primar			S	1	STEFAN DUMITRA
4		Medic primar			S	1	STOICA CARMEN
5		Medic specialist			S	1	vacant
6		Asistent medical		principal	PL	1	BUBOIU MARIA
7		Asistent medical		principal	PL	1	FULEP VOICHTA
8		Asistent medical		principal	PL	1	LUPU ILEANA
9		Asistent medical		principal	PL	1	MARGAU MIRELA NELICA
10		Asistent medical		principal	PL	1	NICOARA SIMONA-IONELA
11		Asistent medical		principal	PL	1	POPESCU MIRELA MARIANA
12		Asistent medical		principal	PL	1	RESIGA LILIANA
13		Asistent medical		principal	PL	1	PARVANESCU ADELINA
14		Statistician medical		principal	M	1	PACURAR FLORIN
15		Asistent medical		principal	PL	1	vacant
16		Asistent medical		principal	PL	1	vacant
17		Infirmiera			G	1	DOLCESCU CAMELIA
18		Infirmiera			G	1	MARICIUC SILVICA
19		Infirmiera			G	1	VAIDEANU FLORICA
20		Infirmiera			G	1	vacant
21		Ingrjititoare			G	1	vacant

SECTIA RECUPERARE, MEDICINA FIZICA SI BALNEOLOGIE - 23 POSTURI

Paturi: 50; din care: Sectie 50

1	Medic primar-sef sectie	II	S	BICA IOAN
2	Medic primar		S	CIORTEA GABRIELA
3	Medic primar		S	vacant
4	Medic specialist		S	vacant
5	Kinetoterapeut		S	vacant
6	Asistent medical-sef	principal	PL	COTIGA CLAUDIA STEFANIA
7	Asistent medical	principal	PL	ANCUTESCU VLASIE CRISTINA
8	Asistent medical	principal	PL	BORDEIANU ELENA CORINA
9	Asistent medical	principal	PL	BRABETE FELICIA
10	Asistent medical	principal	PL	DAMIAN IULIANA CARMEN
11	Asistent medical	principal	PL	GHERGHELY ROZSI GYONGY
12	Asistent medical	principal	PL	KATO FLORICA
13	Asistent medical	principal	PL	POPA ADINA LIVIA
14	Asistent medical	principal	PL	SUBA CARMEN
15	Asistent medical	principal	PL	VLAD EUGENIA
16	Asistent medical		S	FILIMON MARIANA ELENA
17	Statistician medical	principal	M	DUMITRESCU CARMEN DANIELA
18	Asistent medical		PL	vacant
19	Infirmiera		G	BOGDAN COSMINA MARCELA
20	Infirmiera		G	FILIP ELENA
21	Infirmiera		G	MEDREA MIHAELA ADRIANA
22	Infirmiera		G	TAPUC MARIA
23	Infirmiera		G	vacant

COMPARTIMENT REUMATOLOGIE - 14 POSTURI

Paturi: 15; din care: Compartiment 15

1	Medic primar		S	1 MICLAUS RADU
2	Medic primar		S	1 VELCHEREAN NICOLA MIHAELA
3	Asistent medical	principal	PL	1 ABRUDEAN DORINA
4	Asistent medical	principal	PL	1 JIC MIHAELA
5	Asistent medical	principal	PL	1 RACEU MARIA
6	Asistent medical		PL	1 GLAVU ANGELICA DANIELA
7	Asistent medical		PL	1 VOLLONCS ADRIANA CRINELA
8	Asistent medical		PL	1 vacant
9	Statistician medical		PL	1 vacant
10	Infirmiera		G	1 ANCA ELENA
11	Infirmiera		G	1 BOB LIVIA
12	Infirmiera		G	1 MOGA VIOLETA-MARGARETA
13	Infirmiera		G	1 vacant
14	Infirmiera		G	1 vacant

LABORATOR RECUPERARE, MEDICINA FIZICA SI BALNEOLOGIE - 26 POSTURI

1	Medic primar			S	1	vacant
2	Kinetoterapeut			S	1	BUCULESCU ALIN
3	Kinetoterapeut			S	1	GURA CRISTIAN
4	Kinetoterapeut			S	1	IGNA FLORINA NICOLETA
5	Kinetoterapeut			S	1	MARCUS DANIEL
6	Kinetoterapeut			S	1	OLARIU DUDAS DIANA IONELA
7	Kinetoterapeut			S	1	ZOICA CRISTINA MARIA
8	Asistent medical		principal	PL	1	BLANARU CARMELA
9	Asistent medical		principal	PL	1	BOCIT GHEORGHE
10	Asistent medical		principal	PL	1	COSTEA VOICHIITA
11	Asistent medical		principal	PL	1	MUSTE CARMEN MARIA
12	Asistent medical		principal	PL	1	STOICA GABRIELA
13	Asistent medical		principal	PL	1	VAJDA MIHAELA MEDINA
14	Asistent medical		principal	PL	1	WEBER MARCELA LUCIA
15	Oficiant medical			M	1	DASCALITA PETRE
16	Asistent medical		principal	PL	1	vacant
17	Asistent medical			PL	1	vacant
18	Asistent medical			PL	1	vacant
19	Asistent medical			PL	1	vacant
20	Baies			G	1	GASPAR LUCIA
21	Baies			G	1	MARICA SORINA
22	Baies			G	1	MATEI MARIANA
23	Baies			G	1	MUSTEA NELA FELICIA
24	Baies			G	1	PUTAN ANA
25	Ingrijitoare			G	1	vacant
26	Ingrijitoare			G	1	vacant

SECTIA PNEUMOLOGIE - 39 POSTURI

Patuti: 70; din care: Sectie 50; Compartiment T.B.C. 8

1	Medic primar-sef sectie cu deleg.		II	S	1	PETRU I IOAN DORIN
2	Medic primar			S	1	BULUGEAN LUCIA
3	Medic primar			S	1	DODA CAMELIA
4	Medic primar			S	1	vacant temporar
5	Medic primar			S	1	PISEL NICOLAE ALEXANDRU
6	Medic specialist			S	1	BUDARESCU MARIA CRISTINA
7	Medic primar			S	1	vacant
8	Medic specialist			S	1	vacant
9	Asistent medical-sef		principal	PL	1	URECHE BIANCA IOSEFINA
10	Asistent medical		principal	PL	1	CURETEU IRINA ANISOARA
11	Asistent medical		principal	PL	1	IOVAN FELICIA AURELIA

12		Asistent medical	principal	PL	1	JUDE LIANA GABRIELA
13		Asistent medical	principal	PL	1	JURJ RODICA
14		Asistent medical	principal	S	1	PALALAU AURORA GRATIELA
15		Asistent medical	principal	PL	1	PANDREA DANIELA FLOARE
16		Asistent medical	principal	PL	1	PARAU ELENA
17		Asistent medical	principal	PL	1	TODEREAN ANETA
18		Asistent medical	principal	PL	1	VASS FLORINELA
19		Asistent medical	principal	PL	1	FILIMON DORINA ELENA
20		Statistician medical	principal	M	1	ACHIM VICTORITA
21		Asistent medical	principal	PL	1	vacant
22		Asistent medical	principal	PL	1	vacant
23		Asistent medical	principal	PL	1	vacant
24		Asistent medical	principal	PL	1	vacant
25		Asistent medical	principal	S	1	vacant
26		Asistent medical		PL	1	vacant
27		Asistent medical		PL	1	vacant
28		Asistent medical		PL	1	vacant
29		Infirmiera		G	1	FLUERAS NICULINA
30		Infirmiera		G	1	GROZA LUCIA
31		Infirmiera		G	1	MUNTEANU FLORICA
32		Infirmiera		G	1	NEAG RODICA
33		Infirmiera		G	1	NICULA MARIA DORINA
34		Infirmiera		G	1	OLAR LAURA
35		Infirmiera		G	1	RACILA ELENA
36		Infirmiera		G	1	GABAR ANA
37		Infirmiera		G	1	vacant
38		Ingrijitoare		G	1	vacant
39		Ingrijitoare		G	1	vacant

CENTRUL DE HEMODIALIZA - 27 POSTURI

Aparate: 9

1	Medic primar-sef sectie		I	S	1	PALAMAR MARCEL
2	Medic specialist			S	1	GREC MARIUS DORIN
3	Inginer		I	S	1	COJOCARU HORIA
4	Psiholog specialist			S	1	BURLACU ANA MARIA
5	Tehnician		principal	M	1	CIAPOS SILVIU ADRIAN
6	Inginer		I	S	1	vacant
7	Asistent medical-sef		principal	PL	1	FAUR MIRELA VALENTINA
8	Asistent medical		principal	PL	1	AVRAM DANA DUMITRA
9	Asistent medical		principal	PL	1	CHERECHES HAINAL
10	Asistent medical		principal	PL	1	CIRES MONICA
11	Asistent medical		principal	PL	1	PELLE LIDIA
12	Asistent medical		principal	PL	1	SILASI CRISTINA

13	Asistent medical	principal	PL	1	STOICA GABRIELA
14	Asistent medical	principal	S	1	URSULESCU ELENA RAMONA
15	Statistician medical		M	1	BARNA ANDEEA
16	Asistent medical		PL	1	vacant
17	Asistent medical		PL	1	vacant
18	Asistent medical		PL	1	vacant
19	Asistent medical		PL	1	vacant
20	Asistent medical		PL	1	vacant
21	Infirmiera		G	1	BERA CRISTINA CORNELIA
22	Infirmiera		G	1	PETROVICI ANGELICA LUCIA
23	Infirmiera		G	1	SCUIPICI ANTOANELA
24	Infirmiera		G	1	SINA DANIELA
25	Infirmiera		G	1	ZGARDEA ELENA
26	Ingrijitoare		G	1	SEBESTYEN ADRIANA
27	Ingrijitoare		G	1	vacant

FARMACIA SPITAL - 24 POSTURI

1	Farmacista primar-farmacista sef	II	S	1	AVRAM SIMONA
2	Farmacista primar		S	1	ALMASAN SMARANDA
3	Farmacista primar		S	1	vacant
4	Farmacista		S	1	vacant
5	Asistent medical	principal	PL	1	CRISAN LACRIMOARA MINERVA
6	Asistent medical	principal	PL	1	FEIER LARISA
7	Asistent medical	principal	PL	1	FERA MARIOARA
8	Asistent medical	principal	PL	1	LAVU VIORICA
9	Asistent medical	principal	PL	1	MAGDA ANA MONICA
10	Asistent medical	principal	PL	1	PETRUT SIMONA
11	Asistent medical	principal	PL	1	PITULICE MIRELA
12	Asistent medical	principal	PL	1	TODERICIU DANIELA
13	Asistent medical	principal	PL	1	ZIRNEA EMILIA
14	Operator, controlor date	I	M	1	JULA FLORICA
15	Operator, controlor date	I	M	1	LAZAR FLORICA I.
16	Operator, controlor date	I	M	1	SAMI MARIA
17	Asistent medical	principal	PL	1	vacant
18	Asistent medical	principal	PL	1	vacant
19	Asistent medical	principal	PL	1	vacant
20	Asistent medical		PL	1	vacant
21	Asistent medical		PL	1	vacant
22	Asistent medical		SSD	1	vacant
23	Ingrijitoare		G	1	ILIES MARIA
24	Ingrijitoare		G	1	vacant

LABORATOR DE ANALIZE MEDICALE - 35 POSTURI

1	Medic primar-sef laborator		II	S	1	STOIAN MARIA MIHAELA
2	Medic primar			S	1	SOCACIU CARMEN VIOLETA
3	Medic primar			S	1	VINTILA LETITIA
4	Medic specialist			S	1	CUSNIRIUC MARIA
5	Medic specialist			S	1	vacant
6	Biochemist specialist			S	1	CIORNEA SIMONA
7	Chimist specialist			S	1	vacant
8	Biolog principal			S	1	BOANTA CORINA
9	Biolog principal			S	1	TOMA MIHAELA
10	Farmacist specialist			S	1	POPA ANCA
11	Biochimist		principal	S	1	PISOIU JACOB LILIANA
12	Asistent medical-sef		principal	PL	1	MESLOSAN SIMINA MARIA
13	Asistent medical		principal	PL	1	BOJIN NICULINA
14	Asistent medical		principal	PL	1	BOLDOR LIANA ANGELICA
15	Asistent medical		principal	PL	1	FARCAS MIHAELA TAMARA
16	Asistent medical		principal	PL	1	FURTUNA DORINA
17	Asistent medical		principal	PL	1	GHIURA DANIELA MARIANA
18	Asistent medical		principal	PL	1	GOLEA GHEORGHITA
19	Asistent medical		principal	PL	1	JULA ADINA FELICIA
20	Asistent medical		principal	S	1	MOISA EUGENIA-CARMEN
21	Asistent medical		principal	PL	1	MOISE ELENA
22	Asistent medical		principal	PL	1	POP AURELIA
23	Asistent medical		principal	PL	1	SERBESC ELENA
24	Asistent medical		principal	PL	1	SILAGHI GANEA GABRIELA
25	Asistent medical			PL	1	ANCA IULIANA MARIA VERONICA
26	Asistent medical			PL	1	FURTUNA OTILIA MIHAELA
27	Asistent medical			PL	1	GRIGORE ALINA CONSTANTINA
28	Statistician medical			M	1	COPACI MARIANA
29	Ingrijitoare			G	1	PANTA MARIA
30	Ingrijitoare			G	1	SEREA LILIANA
31	Ingrijitoare			G	1	vacant
PUNCT DE LUCRU TBC - 4 POSTURI						
32	Medic primar			S	1	vacant temporar
33	Asistent medical		principal	PL	1	FAUR DELIA
34	Asistent medical		principal	PL	1	SUTEU DORINA MARIANA
35	Ingrijitoare			G	1	MEILA MIRELA MARIANA

LABORATOR RADIOLOGIE SI IMAGISTICA MEDICALA - 41 POSTURI

1	Medic primar-sef laborator del.		II	S	1	MUNTEAN MINAI RODICA MARIANA
2	Medic primar			S	1	FLOREA DAN CALIN
3	Medic primar			S	1	VERES IOAN LUDOVIC
4	Medic specialist			S	1	PAVEL RADU
5	Medic primar			S	1	vacant temporar
6	Medic primar			S	1	vacant
7	Medic specialist			S	1	vacant
8	Medic specialist			S	1	vacant
9	Fizician medical			S	1	vacant
10	Asistent medical-sef		principal	PL	1	NELEGA GABRIELA LOREDANA
11	Asistent medical		principal	PL	1	BADEA V.ADRIANA
12	Asistent medical		principal	PL	1	BANCHES IOANA DANIELA
13	Asistent medical		principal	PL	1	CALEAN MIHAELA
14	Asistent medical		principal	PL	1	COSTACHE GABRIELA
15	Asistent medical		principal	PL	1	DOMINTE MARINA SVETLANA
16	Asistent medical		principal	PL	1	PETRUT MARIA
17	Asistent medical		principal	PL	1	SANDU CLAUDIA FLORINA
18	Asistent medical		principal	PL	1	STANCIU BIANCA VANINA
19	Asistent medical			PL	1	BABA ALINA ALEXANDRA
20	Asistent medical			PL	1	FRUNZA LOREDANA PAULA
21	Asistent medical			PL	1	HANDRACHI-STEF LUCIAN
22	Asistent medical			PL	1	HOTEA CALIN
23	Asistent medical			M	1	KAST MIHAELA
24	Asistent medical			PL	1	NAN ELENA NICOLETA
25	Asistent medical			PL	1	PARDOS MARIOARA DORINA
26	Asistent medical			PL	1	RAHOVEAN EMILIA VIORICA
27	Asistent medical			PL	1	STAN MIHAELA CRISTINA
28	Asistent medical			PL	1	BUTAS CORINA
29	Asistent medical			PL	1	STANCIU ALIN LORYMER
30	Asistent medical			PL	1	IOVAN FLORICA
31	Asistent medical			PL	1	vacant
32	Asistent medical			PL	1	vacant
33	Asistent medical			PL	1	vacant
34	Asistent medical			PL	1	vacant
35	Registrator medical		principal	M	1	CSIKI ELENA
36	Registrator medical		principal	M	1	FARCAS CLAUDIA CORNELIA
37	Registrator medical			M	1	MUNTEAN-MINAI SMARANDA
38	Registrator medical			M	1	SELAR IOAN DANIEL
39	Ingrijitoare			G	1	NICOARA-STOICA AURELIA RODICA
40	Ingrijitoare			G	1	vacant
41	Ingrijitoare			G	1	vacant

LABORATOR MEDICINA NUCLEARA - 9 POSTURI

1	Medic specialist-sef lab.del.		I	S	1	MUTIU FLORIN
2	Chimist specialist			S	1	STOICESCU TATIANA
3	Fizician medical			S	1	PODELEAN CARMEN RAMONA
4	Asistent medical-sef del.		principal	PL	1	IOANCEA DANIELA
5	Asistent medical		principal	PL	1	DEMEAN DORINELA -COSMINA
6	Asistent medical		principal	PL	1	INVERSIIN RODICA
7	Asistent medical		principal	PL	1	ONCOS VALERIA LEONTINA
8	Asistent medical		principal	PL	1	vacant
9	Ingrjiitoare			G	1	IANC DORINA

SERVICIUL DE ANATOMIE PATOLOGICA - 12 POSTURI

1	Medic specialist-sef serviciu		I	S	1	vacant
2	Medic primar			S	1	BOTESCU ADRIAN GABRIEL
3	Biolog principal			S	1	vacant
4	Asistent medical		principal	PL	1	ADAM MARILENA COSMINA
5	Asistent medical		principal	PL	1	BERBECEANU MONICA LUCIANA
6	Asistent medical		principal	PL	1	JELER DANIELA
7	Asistent medical		principal	PL	1	LAZA MARIA MONICA
8	Asistent medical			PL	1	BOTESCU ELISABETA
9	Autopsier			M	1	ADAM REMUS NICOLAE
10	Autopsier			M	1	NUTU DORU
11	Registrator medical			M	1	MATEI DANIELA
12	Ingrjiitoare			G	1	NOVAC VIORICA

CABINET ONCOLOGIE MEDICALA - 5 POSTURI

1	Medic primar			S	1	vacant temporar
2	Medic specialist			S	1	vacant
3	Asistent medical			PL	1	CHIRIAC ANNEMARIE LUCIA
4	Asistent medical			PL	1	GALEA DOINA CRINA
5	Statistician medical		principal	M	1	DANCIU CARMEN ELENA

CABINET DIABET ZAHARAT, BOLI DE NUTRIITIE SI METABOLISM - 5.5 POSTURI

1	Medic primar			S	1	FOTESCU NICOLETA CODRUTA
2	Medic specialist			S	1	DOMNITEANU GAROFITA
3	Medic primar			S	0,5	vacant
4	Asistent medical		principal	PL	1	FECHETE MARIANA
5	Asistent medical		principal	PL	1	GRUJA ELISABETA
6	Asistent medical		principal	PL	1	TORNEA EUGENIA

UNITATEA DE PRIMIRE URGENTE UPU-SMURD cu punct de lucru in loc.DEVA,ILIA,CALAN si Cab.medicina dentara urgenta - 77 POSTURI

	Medic primar-sef sectie		II	S	1
1					1 POPA TANASE
2	Medic primar			S	1 DUTULESCU LIONEL CIPRIAN
3	Medic primar			S	1 MOGA LUCIA
4	Medic primar			S	1 NICOLA NADINA
5	Medic primar			S	1 STOICA ELENA ANCA
6	Medic primar			S	1 VETEAN MUNTEAN MIRCEA
7	Medic specialist			S	1 GHERMAN MIHAELA LAURA
8	Medic specialist			S	1 LAZAR IONELA
9	Medic specialist			S	1 MIHAESCU MARIA CORINA
10	Medic specialist			S	1 STOICA MARIȘ EMIL
11	Medic primar			S	1 vacant
12	Medic specialist			S	1 vacant
13	Medic specialist			S	1 vacant
14	Medic specialist			S	1 vacant
15	Asistent social		principal	S	1 PAVEL ADINA-FLORINA
16	Asistent medical-sef		principal	S	1 POP VASILICA
17	Asistent medical		principal	S	1 ADESPEI LILIANA
18	Asistent medical		principal	PL	1 BUDA MIRELA
19	Asistent medical		principal	PL	1 CEAPA IOANA CRISTINA
20	Asistent medical		principal	PL	1 CURE LAURA MIRELA
21	Asistent medical		principal	PL	1 DIOANE NICULINA MARIA
22	Asistent medical		principal	M	1 DRAICA ILEANA
23	Asistent medical		principal	PL	1 DROBOT VIVIANA
24	Asistent medical		principal	PL	1 DUTULESCU EUGENIA
25	Asistent medical		principal	PL	1 GHERMAN VALI-MIHAELA
26	Asistent medical		principal	PL	1 GREBENISAN CRISTINA
27	Asistent medical		principal	PL	1 LACZKO-LOGOJAN MIHAELA
28	Asistent medical		principal	PL	1 LOGOJAN DORIN
29	Asistent medical		principal	PL	1 MANOLESCU ELENA ALINA
30	Asistent medical		principal	PL	1 MARGINEAN COSMINA ELENA
31	Asistent medical		principal	PL	1 NAGY LUMINITA SORINA
32	Asistent medical		principal	PL	1 OPROIU ALINA MIHAELA
33	Asistent medical		principal	PL	1 PETREAN FLORINELA LACRAMIOARA
34	Asistent medical		principal	S	1 PIPOS MIHAELA VIORICA
35	Asistent medical		principal	S	1 PREDI ADINA EMANUELA
36	Asistent medical		principal	PL	1 RUSU COSMINA LAURA
37	Asistent medical		principal	PL	1 UNGUR RAMONA LIVIA
38	Asistent medical		principal	PL	1 VARADI CLAUDIA LILIANA
39	Asistent medical		principal	PL	1 ZDETOVETCHI DAN CRISTIAN

40	Asistent medical				Asistent medical	PL	1	BĂRĂȘTEAN OLGA
41	Asistent medical				Asistent medical	PL	1	BARBURA ELENA-CRISTINA
42	Asistent medical				Asistent medical	PL	1	CRACIUN ANAMARIA
43	Asistent medical				Asistent medical	PL	1	IDITA DANIELA
44	Asistent medical				Asistent medical	PL	1	GRAMA CAMELIA LACRAMIOARA
45	Asistent medical				Asistent medical	PL	1	SELAR ADRIAN
46	Sora medicala				Sora medicala	M	1	URS IOANA
47	Asistent medical				Asistent medical	PL	1	MURAR ION MARIUS
48	Asistent medical				Asistent medical	PL	1	PÎRVONI LARISA BERNADETT
49	Asistent medical				Asistent medical	PL	1	SUCIU ANCA CRINA
50	Asistent medical				Asistent medical	PL	1	vacant
51	Operator, controlor date				Operator, controlor date	M	1	BUREANA ANA MARIA
52	Operator, controlor date				Operator, controlor date	M	1	NICHITELEA MARINELA
53	Operator, controlor date				Operator, controlor date	M	1	TRIF LOREDANA IRINA
54	Operator, controlor date				Operator, controlor date	M	1	VINTILA ALINA MIHAELA
55	Operator, controlor date				Operator, controlor date	M	1	MUNTEAN ANCA MARIA
56	Infirmiera				Infirmiera	G	1	BORCA SALOMIA
57	Infirmiera				Infirmiera	G	1	CIORPAC MARIA
58	Infirmiera				Infirmiera	G	1	DANC DANIELA
59	Infirmiera				Infirmiera	G	1	FAUR DORINA CRISTINA
60	Infirmiera				Infirmiera	G	1	IDITA CORNELIA
61	Infirmiera				Infirmiera	G	1	IGRET MONICA LILIOARA
62	Infirmiera				Infirmiera	G	1	PETRICA IULIANA CARMEN
63	Brancardier				Brancardier	G	1	ABRUDEAN MIHAI DORIN
64	Brancardier				Brancardier	G	1	COTOI IOAN
65	Brancardier				Brancardier	G	1	FAUR LUCIAN MARIN
66	Brancardier				Brancardier	G	1	GLIGOR CONSTANTIN
67	Brancardier				Brancardier	G	1	MOGA NICOLAE
68	Brancardier				Brancardier	G	1	MOLDOVAN MILIONOR OVIDIU
69	Brancardier				Brancardier	G	1	MUNTEAN RAUL COSMIN
70	Brancardier				Brancardier	G	1	RATA GHEORGHITA
71	Brancardier				Brancardier	G	1	ȘOANCĂ SORIN DAVID
72	Brancardier				Brancardier	G	1	TRIFOI DUMITRU VALENTIN
73	Ingrjiitoare				Ingrjiitoare	G	1	ALB SINZIANA
74	Ingrjiitoare				Ingrjiitoare	G	1	BALAJ ELISABETA
75	Ingrjiitoare				Ingrjiitoare	G	1	DANESCU ADRIANA
76	Ingrjiitoare				Ingrjiitoare	G	1	PEICA MONICA ELENA
77	Ingrjiitoare				Ingrjiitoare	G	1	STIOPA LIGIA DACIANA

UPU SMURD ILIA - 13 POSTURI

1	Medic specialist		S	1	IDAN MONICA SONIA
2	Medic specialist		S	1	PERJU CATALIN CONSTANTIN
3	Medic		S	1	BUGNAR GABRIELA MONICA
4	Asistent medical	principal	PL	1	HAN MIHAELA
5	Asistent medical	principal	PL	1	HANAS LILIANA
6	Asistent medical	principal	PL	1	ORBONAS ILDIKO
7	Asistent medical	principal	PL	1	SARARU GABRIELA DELIA
8	Sora medicala	principal	M	1	BOGDANEL MARIA
9	Sora medicala	principal	M	1	CACEU ANGELICA
10	Ingrijitoare		G	1	BOCIOACA EUGENIA
11	Ingrijitoare		G	1	BORDEA MARIA
12	Ingrijitoare		G	1	JOSAN DOMNICA
13	Ingrijitoare		G	1	LUCA ANA LENUTA

UPU SMURD CALAN - 11 POSTURI

1	Medic specialist		S	1	vacant
2	Medic specialist		S	1	vacant
3	Asistent medical		PL	1	GAVRILĂ MARIUS DANIEL
4	Asistent medical		PL	1	GRECU TIBERICA
5	Asistent medical		PL	1	POPA FELICIA RODICA
6	Asistent medical		PL	1	UNGUR ADINA FLORINA
7	Asistent medical	debutant	PL	1	CONDORACHI CRISTINA IOANA
8	Ingrijitoare		G	1	CIUCA EUGENIA
9	Ingrijitoare		G	1	PĂDUREAN ELENA
10	Ingrijitoare		G	1	vacant
11	Ingrijitoare		G	1	vacant

CABINET MEDICINA DENTARA URGENTA - 9 POSTURI

1	Medic		S	1	IDITA IOANA ALEXANDRA
2	Medic		S	1	VANCU NICOLAE NONU
3	Medic		S	1	vacant
4	Medic specialist		S	1	vacant
5	Asistent medical	principal	PL	1	CRISAN LOREDANA SANDRA
6	Asistent medical	principal	PL	1	OLARIU DOINA
7	Asistent medical	principal	PL	1	PINTICAN RAMONA
8	Asistent medical		PL	1	vacant
9	Asistent medical		PL	1	vacant

CABINET BOLI INFECTIOASE - 2 POSTURI

1	Medic primar		S	1	CAMPEANU ELENA
2	Asistent medical	principal	PL	1	MEITA NADIA

CABINET PLANIFICARE FAMILIALA - 6 POSTURI

1	Medic primar		S	1	1 vacant
2	Medic specialist		S	1	1 MOCA ILEANA VIORICA
3	Medic specialist		S	1	1 STEFAN LENUTA
4	Asistent medical	principal	S	1	1 VLADAN NICOLETA ELVIRA
5	Asistent medical		PL	1	1 vacant
6	Ingrijitoare		G	1	1 vacant

DISPENSAR TBC DEVA - 6 POSTURI

1	Medic primar		S	1	1 SILVESTRU MARIA
2	Asistent medical	principal	PL	1	1 FOLEA LILIANA
3	Asistent medical	principal	PL	1	1 ROTEA MIRONELA LOREDANA
4	Asistent medical	principal	PL	1	1 TIRBAN VIOLETA
5	Asistent medical		PL	1	1 vacant
6	Statistician medical		M	1	1 SUTEU RAMONA-DIANA

SERVICIUL JUDETETAN DE MEDICINA LEGALA - 26 POSTURI

1	Medic primar-sef serviciu		II	1	1 MARCULESCU DAN OCTAVIAN
2	Medic primar		S	1	1 FOLEA OVIDIU
3	Medic primar		S	1	1 OIEGAR CLAUDIU
4	Medic primar		S	1	1 TOZLOVANU DOREL
5	Medic primar		S	1	1 vacant
6	Medic specialist		S	1	1 vacant
7	Chimist principal		S	1	1 DEACONU SIMONA AMADA
8	Farmacist primar		S	1	1 CURETEAN FLORENTINA
9	Farmacist primar		S	1	1 TRUFAS SIMONA ELENA
10	Inginer	IA	S	1	1 CINDA MARIANA
11	Referent	II	S	1	1 CALINESCU MARIA CARMEN
12	Referent	I	S	1	1 vacant
13	Asistent medical	principal	PL	1	1 ARESAN SIMONA
14	Asistent medical	principal	PL	1	1 BORZA MARIOARA
15	Asistent medical	principal	PL	1	1 BORZA VIRGIL
16	Asistent medical	principal	PL	1	1 ILCA LUCI
17	Asistent medical	principal	PL	1	1 IONESCU CRISTIAN
18	Asistent medical	principal	PL	1	1 IONESCU DANIELA
19	Asistent medical	principal	PL	1	1 LEONTESCU BALU MIRCEA
20	Autopsier		M	1	1 LEONTESCU DAVID GABRIEL
21	Autopsier principal	principal	M	1	1 CALFA CICERONE
22	Registrator medical	principal	M	1	1 BALOG ELVIRA
23	Registrator medical	principal	M	1	1 RUS DANA
24	Statistician medical	principal	M	1	1 MARCULESCU DOINA
25	Ingrijitoare		G	1	1 CHIRILA ANDREEA STEFANIA
26	Brancardier		G	1	1 DEMENY IOSIF

CENTRUL DE SANATATE MINTALA ADULTI - 13 POSTURI

Patuti zi: 50; Stationar de zi psihiatrie 50;

1	Medic primar-sef laborator	I	S	1	CETEAN DANIELA
2	Medic specialist		S	1	BEJAN ANDREEA
3	Psiholog principal		S	1	BOTA FLORINA ARABELA
4	Psiholog practicant		S	1	vacant
5	Asistent medical-sef	principal	PL	1	ANGHELUTA ELEONORA MIRELA
6	Asistent medical	principal	PL	1	AXENTE MARIANA
7	Asistent medical	principal	PL	1	CHIREA DIANA
8	Asistent medical	principal	PL	1	KORB CARMEN GEORGETA
9	Asistent medical	principal	PL	1	TUDOSE NICOLINA
10	Asistent medical		PL	1	vacant
11	Statistician medical		M	1	STOICA MIHAELA CORNELIA
12	Instructor de educatie	principal	PL	1	vacant
13	Ingrjiitoare		G	1	RUCAREANU FLORICA

CENTRUL DE SANATATE MINTALA COPII - 18 POSTURI

Patuti zi: 30; Stationar de zi neuropsihiatrie infantila 30;

1	Medic specialist-sef centru	II	S	1	vacant
2	Medic primar		S	1	vacant
3	Medic specialist		S	1	BUTA RODICA AURORA
4	Asistent social	principal	S	1	BEANGA CARMEN MARIA
5	Logoped principal		S	1	COADA MELINDA ROZALIA
6	Kinetoterapeut		S	1	IONICA GEORGIANA
7	Psiholog principal		S	1	ENE GABRIELA MONICA
8	Psiholog principal		S	1	GRAUR IULIA IOANA
9	Asistent medical-sef	principal	S	1	TOTH MARILENA
10	Asistent medical	principal	PL	1	OPREA TIMEA
11	Asistent medical	principal	PL	1	PITU CORINA ALINA
12	Instructor de educatie		M	1	REIS CRISTINA
13	Instructor de educatie		M	1	TODEA OANA ELISABETA
14	Statistician medical	principal	M	1	TUDOSIE ANDY GABRIEL
15	Asistent medical	principal	PL	1	vacant
16	Infirmiera		G	1	ORLEA DORINA
17	Ingrjiitoare		G	1	OZON ALINA-CORINA
18	Ingrjiitoare		G	1	vacant

AMBULATORIUL INTEGRAT - CABINET ALERGOLOGIE - 2 POSTURI

1	Medic primar		S	1	IGHERGAN ALEXANDRINA
2	Asistent medical	principal	PL	1	vacant

CABINET DERMATOLOGIE PEDIATRICA - 2 POSTURI

1	Medic primar		S	1	MAGHERU MIHAELA
2	Asistent medical	principal	PL	1	JUDUC CRISTINA

CABINET MEDICINA MUNCII - 1 POST

1	Medic primar		S	1	vacant
---	--------------	--	---	---	--------

CABINET AUDIOLOGIE - 1 POST

1	Asistent medical	principal	PL	1	vacant
---	------------------	-----------	----	---	--------

CABINET NEUROLOGIE - 1 POST

1	Asistent medical	principal	PL	1	CAZAN CAMELIA
---	------------------	-----------	----	---	---------------

LABORATOR EXPLORARI FUNCTIONALE PNEUMOLOGIE - 1 POST

1	Asistent medical	principal	PL	1	PETRUJI MARIANA
---	------------------	-----------	----	---	-----------------

AMBULATORIUL DE SPECIALITATE PENTRU SPORTIVI - CABINET MEDICINA SPORTIVA - 3 POSTURI

1	Medic specialist		S	1	vacant
2	Asistent medical	principal	PL	1	vacant
3	Asistent medical		PL	1	vacant

CABINET MEDICINA SPORTIVA -LOT OLIMPIC DE GIMNASTICA SI GRUP SCOLAR SPORTIV - 5 POSTURI

1	Medic specialist		S	1	OLTEAN SANDA
2	Asistent medical	principal	PL	1	BLAGA ELENA GIULIANA
3	Asistent medical	principal	PL	1	STANESCU LAVINIA
4	Asistent medical	principal	PL	1	VINERAN ADRIANA
5	Asistent medical		PL	1	vacant

CABINET RECUPERARE MEDICINA FIZICA SI BALNEOLOGIE-LOT OLIMPIC DE GIMNASTICA SI GRUP SCOLAR SPORTIV - 1 POST

1	Asistent medical	principal	PL	1	GERGELY ENIKO
---	------------------	-----------	----	---	---------------

CABINET PSIHOLOGIC LOT OLIMPIC SI GRUP SCOLAR SPORTIV - 1 POST

1	Psiholog practicant		S	1	vacant
---	---------------------	--	---	---	--------

CABINET STOMATOLOGIC LOT OLIMPIC SI GRUP SCOLAR SPORTIV - 1POST

1	Medic		S	1	SORCA BOGDAN
---	-------	--	---	---	--------------

MEDICI REZIDENTI - 30 POSTURI

1	Medic rezident an I		S	1	BLAJ PATRICIA
2	Medic rezident an I		S	1	GHERASIM IOAN TUDOR
3	Medic rezident an I		S	1	MARIAN ANAMARIA ADRIANA
4	Medic rezident an I		S	1	POP DENISA MARIA
5	Medic rezident an I		S	1	SACEANU OANA MARIA
6	Medic rezident an I		S	1	SOOS ELENA ANDRA
7	Medic rezident an II		S	1	COLTA ANA MARIA
8	Medic rezident an II		S	1	IORDACHE LORENA
9	Medic rezident an III		S	1	ANGELESCU COPTIL ANDREEA
10	Medic rezident an III		S	1	BENTEU DARIUS

11		Medic rezident an III		S	1	BENTEU DIANA
12		Medic rezident an III		S	1	BETEA RAZVAN OLIVIAN
13		Medic rezident an III		S	1	BIGLIGIU TEODORA ADRIANA
14		Medic rezident an III		S	1	GEORGESCU GEORGE VALENTIN
15		Medic rezident an III		S	1	HOLHOS TALIDA IOANA
16		Medic rezident an III		S	1	MESTEREAGA GEORGE PETRISOR
17		Medic rezident an III		S	1	MUNTEAN MIHAELA LIVIA
18		Medic rezident an III		S	1	PETCA ELVIS SAMUEL
19		Medic rezident an III		S	1	SALEH AHMED
20		Medic rezident an III		S	1	ZAHARIE ANAMARIA
21		Medic rezident an III		S	1	vacant
22		Medic rezident an IV		S	1	ARDELEANU ANDREEA GIORGIANA
23		Medic rezident an IV		S	1	CANDEA ANDREEA MARIA
24		Medic rezident an IV		S	1	IACOB TUDOR CRISTIAN
25		Medic rezident an IV		S	1	VACARIU ANDREI ALEXANDRU
26		Medic rezident an IV		S	1	vacant
27		Medic rezident an V		S	1	BUNEA ANGHEL LUCIAN
28		Medic rezident an V		S	1	IFTIMIE VICTOR
29		Medic rezident an V		S	1	MIHUT CARLA EMANUELA
30		Medic rezident an V		S	1	vacant

PROGRAM NATIONAL 3 - 1 POST

1		Economist		II	S	1	vacant
---	--	-----------	--	----	---	---	--------

SUBPROGRAM PN 6 DIABET - 1 POST

1		Operator, controlor date		I	M	1	vacant
---	--	--------------------------	--	---	---	---	--------

SUBPROGRAM HIV SIDA - 2 POSTURI

1		Asistent medical		principal	PL	1	MOISE ALINA MARIA
2		Asistent medical		principal	PL	1	PETRASCU MIHAELA MARIANA

CENTRUL DE SANATATE MULTIFUNCTIONAL CALAN - 7 POSTURI

1		Medic primar			S	1	BRANESCU NICOLAE GAVRIL
2		Medic specialist			S	1	SAHIU CARMEN MAGDA
3		Kinetoterapeut			S	1	vacant
4		Asistent medical		principal	PL	1	BARBU LIANA GIANINA
5		Asistent medical		principal	PL	1	LASCOIU AURICA
6		Ingrijitoare			G	1	MOLDOVEANU SALVINA
7		Ingrijitoare			G	1	NOVAC ALEXANDRA

SERVICIUL DE PREVENIRE SI CONTROL AL INFECTIILOR NOZOCOMIALE - 8 POSTURI

1	Medic specialist-sef serviciu del.	I	S	1	BARABAS EDITH
2	Medic specialist		S	0,5	LEUCA CREMENASIU DIANA
3	Farmacist primar		S	0,5	vacant
4	Asistent medical	principal	PL	1	BUBOIU SORIN PETRU
5	Asistent medical	principal	PL	1	GOIA RODICA LOREDANA
6	Asistent medical	principal	PL	1	VRACIU NICOLAE
7	Asistent medical		PL	1	VRACIU NICOLAE ANDREI
8	Agent D.D.D.		G	1	BEJGANEANU COSTEL
9	Agent D.D.D.		G	1	CSISZER PETRU ZSOLT

COMPARTIMENT STERILIZARE - 12 POSTURI

1	Asistent medical-sef	principal	PL	1	LUPSAN FLORICA
2	Asistent medical	principal	PL	1	NELEGA ANGELA ELISABETA
3	Asistent medical	principal	PL	1	POPESC LILIANA
4	Asistent medical	principal	PL	1	PUTUCA BIANCA
5	Asistent medical	principal	PL	1	SALA LAVINIA
6	Asistent medical	principal	PL	1	SIMON CAMELIA SANDA
7	Asistent medical	principal	PL	1	TOMA CORINA
8	Asistent medical	principal	PL	1	TUDOR PETRUTA CORINA
9	Asistent medical	principal	PL	1	vacant
10	Asistent medical		PL	1	vacant
11	Ingrjiitoare		G	1	STEGA RODICA
12	Ingrjiitoare		G	1	vacant

COMPARTIMENT DIETETICA - 2,5 POSTURI

1	Medic specialist		S	0,5	vacant
2	Asistent medical	principal	PL	1	ALBU ECATERINA DANIELA
3	Asistent medical	principal	S	1	NICOARA LIVIA MARIA

CABINET ASISTENTA SOCIALA - 1 POST

1	Sociolog		S	1	BUCERZAN ANDREEA MARIANA
---	----------	--	---	---	--------------------------

CABINET DE GENETICA MEDICALA - 2 POSTURI

1	Medic specialist		S	1	vacant
2	Asistent medical		PL	1	vacant

STATIE DE STERILIZARE DESEURI MEDICALE - 1 POST

1	Muncitor calif. (electromecanic)	I		1	CIRES DORIN SORIN
---	----------------------------------	---	--	---	-------------------

COMPARTIMENT INTERNAR-EXTERNARI - 7 POSTURI

1	Muncitor calificat (garderobier)	IV		1	BEIAN MARIANA
2	Muncitor calificat (garderobier)	IV		1	JAKAB EDITH
3	Registrator medical	principal	M	1	BAIDAN MIRELA
4	Registrator medical	principal	M	1	FILIMON ADRIANA
5	Registrator medical	principal	M	1	IOVAN MARIA RODICA
6	Registrator medical		M	1	vacant
7	Ingrijitoare		G	1	vacant

SERVICIUL FINANCIAR CONTABILITATE - 9 POSTURI

1	Sef serviciu	II	S	1	MOLDOVAN CECILIA-suspendat temporar DOBREI IOANA DIANA DOMENIQUE (interimar)
2	Economist	I	S	1	CIORA MARIA
3	Economist	I	S	1	POPA RAMONA ELENA
4	Economist	IA	S	1	vacant temporar
5	Economist	IA	S	1	TOMA CLAUDIA TEODORA
6	Economist	IA	S	1	vacant
7	Casier		M	1	FILIP ANGELICA
8	Contabil	IA	M	1	PIRVA LIDIA
9	Contabil	IA	M	1	SUBA ELENA

BIROU ACHIZITII - 6 POSTURI

1	Sef birou deleg.	II	S	1	NEGREA MIHAELA LILIANA
2	Economist	IA	S	1	PALCO MELINDA IULIA
3	Economist	IA	S	1	VLASIN AIDA NICOLETA
4	Economist	I	S	1	OLTEAN ARTIMIZA
5	Referent	II	S	1	FODOR IOANA
6	Economist	IA	S	1	vacant temporar

BIROU DE MANAGEMENT AL CALITATII - 6 POSTURI

1	Sef birou deleg.	II	S	1	TIF MIHAELA
2	Medic specialist		S	1	ROMOSAN OANA GEORGIANA
3	Consilier juridic	II	S	1	COTARLEA ADRIAN
4	Economist	I	S	1	vacant temporar
5	Referent de specialitate	deb.	S	1	vacant
6	Referent de specialitate	III	S	1	NEAGU STEFANIA VERONICA

COMPARTIMENT JURIDIC - 2 POSTURI

1	Consilier juridic	IA	S	1	BARTAN IULIA
2	Consilier juridic	IA	S	1	BERCEANU GABRIEL

COMPARTIMENT AUDIT PUBLIC INTERN - 2 POSTURI

1	Economist	IA	S	1	CARMAZAN VERGINICA AMALIA
2	Economist	IA	S	1	POPA COSMIN OVIDIU

COMPARTIMENT RELATII CU PUBLICUL - 2 POSTURI

1	Consilier	I	S	1	RUNCAN LUMINITA TEODORA
2	Economist	IA	S	1	vacant

COMPARTIMENT INTERN DE PREVENIRE SI PROTECTIE - 1.5 POSTURI

1	Inginer	IA	S	1	IACOBESCU MARIUS
2	Subinginer	I	SSD	0.5	ROMOSAN ADRIANA

COMPARTIMENT TEHNIC - 1.5 POST

1	Subinginer	I	SSD	0.5	ROMOSAN ADRIANA
2	Inginer	I	S	1	vacant

SERVICIUL RUNOS - 8 POSTURI

1	Sef serviciu	II	S	1	SIRBU NICODINA MARIANA
2	Economist	IA	S	1	MUTIU LIZETA LIA
3	Inginer	IA	S	1	IORDACHE ADRIANA DANA
4	Inginer	IA	S	1	PARVA NELI GABRIELA
5	Inginer	IA	S	1	ZSOK DANIELA GEORGETA
6	Referent de specialitate	I	S	1	BOTA LILIANA VIOLETA
7	Referent	IA	M	1	PETRICA ELEONORA CRISTINA
8	Referent	IA	SSD	1	MARGINEAN SOFIA

SERVICIUL INFORMATICA SI STATISTICA MEDICALA - 19 POSTURI

1	Sef serviciu	II	S	1	LUCA ECATERINA RODICA
2	Analist-programator	IA	S	1	TRIF DANA
3	Economist	IA	S	1	RAILEANU MIHAELA LUMINITA
4	Informatician	I	SSD	1	OANA MIHAELA
5	Analist-programator aj.	IA	M	1	GRECU PAVELINA
6	Economist	II	S	1	CRACIUN ROXANA LACRIMIOARA
7	Operator, controlor date	I	M	1	CODEESCU VALENTIN
8	Operator, controlor date	I	M	1	IDRON GEORGETA BEATRICE
9	Operator, controlor date	I	M	1	PETCA DANIELA
10	Operator, controlor date	I	M	1	SZEGEDI IULIA ELENA
11	Operator, controlor date	III	M	1	UNGUR DIANA ELENA
12	Registrator medical	principal	M	1	BOGHIU DOINITA
13	Registrator medical	principal	M	1	MAROSAN IBOLYA
14	Registrator medical	principal	M	1	MATES ELENA
15	Registrator medical	principal	M	1	TOMUTA DORICA
16	Statistician medical	principal	M	1	DARIE MARIA
17	Statistician medical		M	1	PETRIC NICULINA CLAUDIA
18	Statistician medical		M	1	SORCA RAMONA CRISTINA
19	Statistician medical		M	1	DANCIU BIANCA LIGINIA

SERVICIUL ADMINISTRATIV - 48 POSTURI

1	Sef serviciu		II	S	1	LUDOSEAN IOAN
COMPARTIMENT FUNCTIONARI ADMINISTRATIVI - 17 POSTURI						
2	Inginer		IA	S	1	DEACONU LAURIAN-ALIN
3	Preot		I	S	1	VOIHOZEANU CONSTANTIN
4	Consilier		II	S	1	MORAR RAZVAN
5	Arhivar			M	1	HORVATH MARIANA
6	Functionar			M	1	GHIARA IONEL MIRCEA
7	Referent		II	M	1	vacant
8	Referent		IA	M	1	STANILA CARMEN
9	Ingrjiitoare			G	1	IVASCAU VIORICA
10	Muncitor necalificat		I		1	SINA VASILE
11	Muncitor necalificat		I		1	VARGA EVA
12	Muncitor calificat (telefonist)		III		1	MOCAN AURA MIRELA
13	Muncitor calificat (telefonist)		III		1	MOCANU MONICA
14	Muncitor calificat (telefonist)		III		1	TRIF LILIANA
15	Muncitor calificat (telefonist)		III		1	TRIF GEORGETA
16	Muncitor calificat (telefonist)		III		1	BUTA ELENA
17	Ingrjiitoare			G	1	vacant
18	Ingrjiitoare			G	1	vacant

BLOC ALIMENTAR - 15 POSTURI

19	Muncitor calificat (bucatar)		II		1	CASALEAN MARITI
20	Muncitor calificat (bucatar)		III		1	BOUTU MARIA
21	Muncitor calificat (bucatar)		III		1	DOLCESCU MARIOARA
22	Muncitor calificat (bucatar)		III		1	DUMITRASCU VOICHITA
23	Muncitor calificat (bucatar)		III		1	MODREA LILIANA
24	Muncitor calificat (bucatar)		III		1	ONET FLORICA
25	Muncitor calificat (bucatar)		IV		1	BUGARIU VICTORIA
26	Muncitor calificat (bucatar)		IV		1	POP SONIA
27	Muncitor calificat (bucatar)		IV		1	ROMAN TITIANA
28	Muncitor calificat (bucatar)		IV		1	SIMOC MARIANA
29	Muncitor calificat (bucatar)		IV		1	SZATMARI OTTO
30	Muncitor calificat (bucatar)		IV		1	UNGUREANU RODICA
31	Muncitor necalificat		I		1	CRISAN PETRU DORIN
32	Muncitor necalificat		I		1	RANESCU SAVETA
33	Muncitor calificat (bucatar)		III		1	vacant

SPALATORIA SPITAL -15 POSTURI

34	Magaziner			M	1	MIRCE LAURA
35	Muncitor calificat (lenjereasa)		II		1	ILLES VOICHITA
36	Muncitor calificat (lenjereasa)		II		1	KATO EVA
37	Muncitor calificat (lenjereasa)		II		1	SORINCA LIVIA
38	Spalatoreasa			G	1	BORCA FLOARE
39	Spalatoreasa			G	1	BOROI MIRUNA-ALINA
40	Spalatoreasa			G	1	BURZ MARIA
41	Spalatoreasa			G	1	CIORAN GENA
42	Spalatoreasa			G	1	CIUCULESCU MARIA
43	Spalatoreasa			G	1	DEMIAN EMILIA
44	Spalatoreasa			G	1	FLUIERAS EUGENIA
45	Spalatoreasa			G	1	GRUESCU GEANINA
46	Spalatoreasa			G	1	IACOB ANA
47	Spalatoreasa			G	1	JOSAN SOFIA
48	Spalatoreasa			G	1	MURESAN ELENA

BIROU INTRETINERE SI REPARATII (ATELIER) - 45 POSTURI

1	Sef birou		II	S	1	vacant
ECHIPA DE INTRETINERE A INSTALATIILOR DE APA SI INCALZIRE - 21 POSTURI						
2	Muncitor calificat (foclist)		II		1	PREJBAN ARDELEAN
3	Muncitor calificat (foclist)		III		1	COSTEA FLORIN PETRU
4	Muncitor calificat (foclist)		III		1	JUDE CORNEL
5	Muncitor calificat (foclist)		III		1	LITA IULIAN
6	Muncitor calificat (foclist)		III		1	MOLNAR LEVENTE LEHEL
7	Muncitor calificat (foclist)		III		1	STINGA GABRIEL VASILE
8	Muncitor calificat (foclist)		III		1	TODERAS PAUL
9	Muncitor calificat (foclist)		III		1	CACEU-BULFTEA MARIAN
10	Muncitor calificat (foclist)		IV		1	ROMAN IOAN
11	Muncitor calificat (instalator)		I		1	BURIAN ALEXANDRU
12	Muncitor calificat (instalator)		I		1	JANOS STEFAN
13	Muncitor calificat (instalator)		I		1	MACARIE EMIL
14	Muncitor calificat (instalator)		I		1	MORAR NICOLAE
15	Muncitor calificat (instalator)		I		1	PROTOP DANIEL
16	Muncitor calificat (instalator)		I		1	VACARI DOREL NICOLAE
17	Muncitor calif. (instalator gaze)		I		1	NAN VIOREL
18	Muncitor calificat (instalator)		II		1	SAVA IONEL
19	Muncitor calificat (instalator)		II		1	MUNTEAN DOREL
20	Muncitor calif. (instalator gaze)		III		1	MAGDA SERGIU NICOLAE
21	Muncitor calificat (foclist)		II		1	vacant
22	Muncitor calificat (instalator)		I		1	vacant

ECHIPA DE LACATUSI SI ELECTRICIENI - 12 POSTURI

23		Muncitor calificat (electrician)	I		1	ARDELEAN DOINA
24		Muncitor calificat (electrician)	I		1	HANCILA LIVIU
25		Muncitor calificat (electrician)	I		1	JEICAN IOAN
26		Muncitor calificat (electrician)	I		1	PARPALEA STEFAN
27		Muncitor calif. (lacatus mecanic)	I		1	BUDA PETRICA NELU
28		Muncitor calif. (lacatus mecanic)	I		1	PURDA DANIEL TRAIAN
29		Muncitor calif. (lacatus mecanic)	I		1	SIRBU IOSIF
30		Muncitor calif. (lacatus mecanic)	II		1	IOANI NICOLAE AUREL
31		Muncitor calif. (lacatus mecanic)	III		1	POPALUCIAN
32		Muncitor calificat (electrician)	I		1	vacant
33		Muncitor calificat (electrician)	I		1	vacant
34		Muncitor calificat (electrician)	I		1	vacant

ECHIPA DE REPARATII - 5 POSTURI

35		Muncitor calificat (sudor)	III		1	VINERSAR DANIEL STEFAN
36		Muncitor calificat (tamplar)	I		1	TUDOR IULIAN
37		Muncitor calificat (zugrav)	I		1	MUNTEAN EMIL
38		Muncitor calificat (zidar)	I		1	vacant
39		Muncitor calificat (zugrav)	II		1	vacant

ECHIPA DE DESERVIRE A LIFTURILOR - 6 POSTURI

40		Muncitor calificat (lifter)	IV		1	AVRAM DANIELA VIOLETA
41		Muncitor calificat (lifter)	IV		1	BOLDEANU VOICHITA
42		Muncitor calificat (lifter)	IV		1	LUCHIN LIDIA
43		Muncitor calificat (lifter)	IV		1	vacant
44		Muncitor calificat (lifter)	IV		1	vacant
45		Muncitor calificat (lifter)	IV		1	vacant

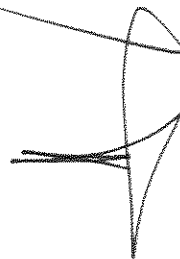
BIROU TRANSPORT APROVIZIONARE - 13 POSTURI

1	Sef birou deleg.		II	M	1	DINIS EMILIA
2	Magaziner			M	1	DEMIAN MEDELA
3	Magaziner			M	1	MILITARU LAURENTIU
4	Referent		IA	M	1	SELAR SIMONA RODICA
5	Referent		II	M	1	HANCILA CORNELIA ELENA
6	Magaziner			M	1	vacant
7	Muncitor calificat (sofer)		I		1	BUFTEA PETRU
8	Sofer		I		1	CHILARESCU IOAN
9	Sofer		I		1	DASCAL MARCELA LILIANA
10	Sofer		I		1	STINGA DANIEL
11	Muncitor calificat (sofer)		III		1	vacant
12	Muncitor calificat (sofer)		II		1	vacant
13	Muncitor calificat (sofer)		II		1	vacant

NR. TOTAL FUNCȚII CONTRACTUALE DE CONDUCERE	40
NR. TOTAL FUNCȚII CONTRACTUALE DE EXECUȚIE	1326
NR. TOTAL POSTURI POTRIVIT ART. III ALIN. (2) DIN O.U.G 63/2010	0
NR. TOTAL FUNCȚII ÎN INSTITUȚIE	1367

PREȘEDINTE:

ADRIAN NICOLAE DAVID



SECRETAR AL JUDEȚULUI:

SORIN DUMITRU ȘTEFONI