

HOTĂRÂREA NR.37/2015
privind aprobarea Organigramei și a Statului de funcții ale Spitalului Județean de
Urgență Deva

CONSILIUL JUDEȚEAN HUNEDOARA;

Având în vedere nota de fundamentare la proiectul de hotărâre, raportul de specialitate al compartimentelor de resort, precum și raportul comisiilor de specialitate ale Consiliului Județean;

Văzând adresa nr. 5415/13.03.2015 a managerului Spitalului Județean de Urgență Deva, înregistrată la Consiliul Județean Hunedoara cu nr. 2747/12.03.2015;

Conform Ordinului Ministrului Sănătății nr. 698/2001 privind angajarea, transferarea și detașarea medicilor, farmaciștilor, biologilor, biochimiștilor și chimiștilor, precum și personalului de specialitate cu studii superioare din unitățile sanitare publice;

În baza anexei nr. 1 lit. a pct. 1 și pct 2 și anexei nr. 5 la Ordinul Ministrului Sănătății nr. 1224/2010 privind aprobarea normativelor de personal pentru asistența medicală spitalicească;

Conform prevederilor Hotărârii Guvernului României nr.286/2011 privind aprobarea Regulamentului-cadru privind stabilirea principiilor generale de ocupare a unui post vacant sau temporar vacant corespunzător funcțiilor contractuale și a criteriilor de promovare în grade sau trepte profesionale imediat superioare a personalului contractual din sectorul bugetar plătit din fonduri publice, cu modificările și completările ulterioare;

Având în vedere prevederile art.182 alin.1.lit.a din Legea nr.95/2006 privind reforma în domeniul sănătății, cu modificările și completările ulterioare;

În temeiul dispozițiilor art.91 alin.1 lit. a, alin.2 lit.c și ale art.97 alin.1 din Legea administrației publice locale nr.215/2001, republicată, cu modificările și completările ulterioare ;

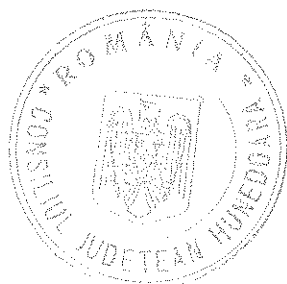
HOTĂRĂȘTE:

Art.1 – Aprobă Organigrama și Statul de funcții ale Spitalului Județean de Urgență Deva, conform anexei nr. 1 și anexei nr. 2 care fac parte integrantă din prezenta, începând cu data de 01.04.2015.

Art.2 – Hotărârea Consiliului Județean Hunedoara nr. 222/2014 se abrogă, începând cu data intrării în vigoare a prezentei.

Art.3 – Prezenta va fi dusă la îndeplinire de Spitalul Județean de Urgență Deva și va fi comunicată celor interesați prin grija Serviciului administrație publică locală, relații publice, ATOP din cadrul aparatului de specialitate al Consiliului Județean Hunedoara.

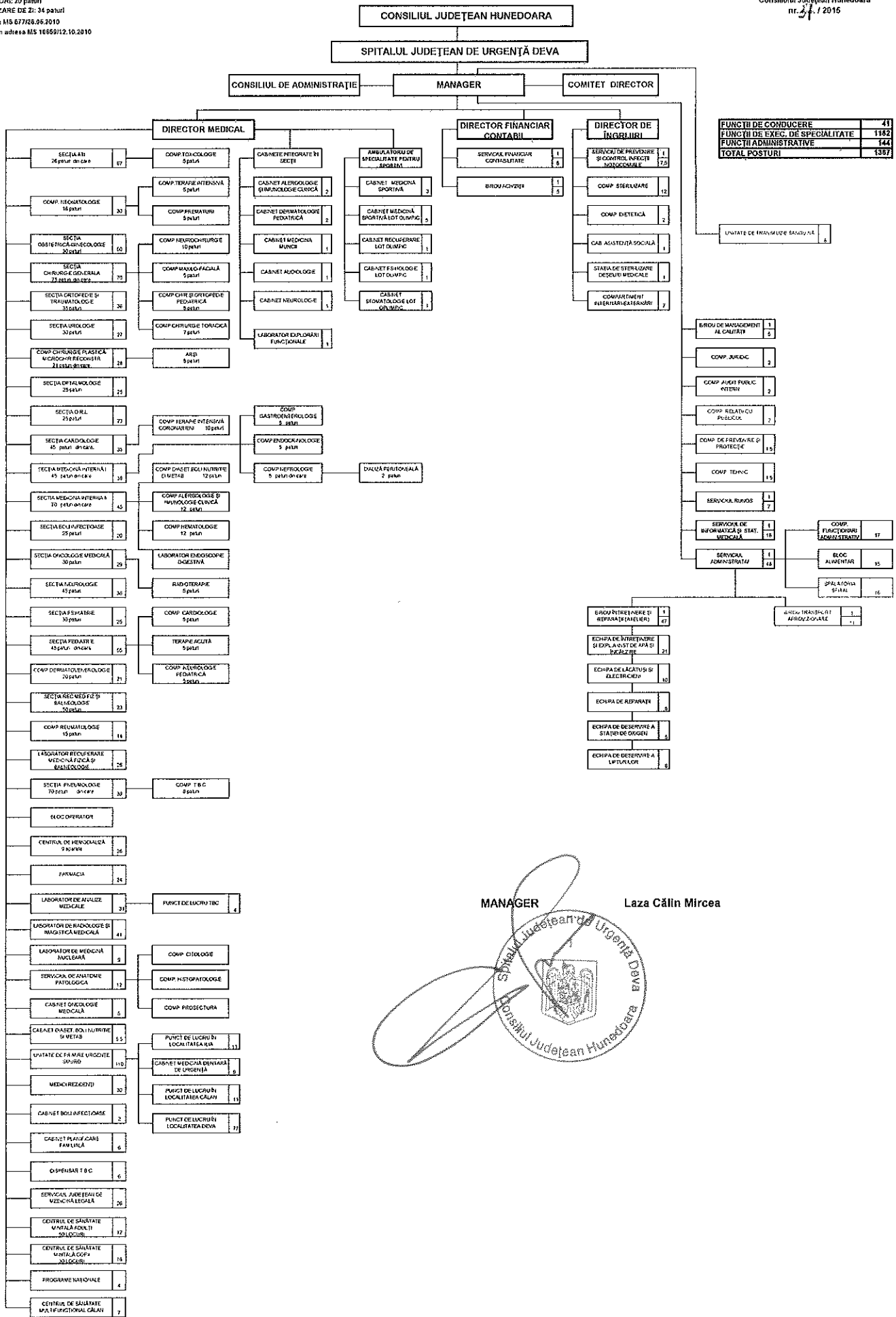
p. **PREȘEDINTE,**
Dorin Oliviu Gligor
VICEPREȘEDINTE



CONTRASEMNEAZĂ:
SECRETAR AL JUDEȚULUI,
Daniel Dan

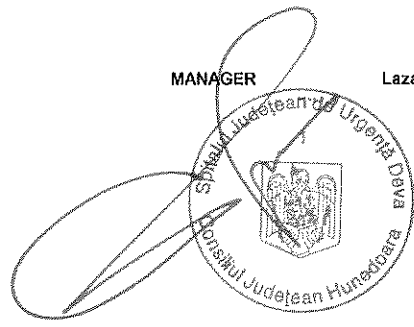


Deva, la 27 martie 2015



FUNCȚII DE CONDUCERE	41
FUNCȚII DE EXEC. DE SPECIALITATE	1182
FUNCȚII ADMINISTRATIVE	144
TOTAL POSTURI	1367

MANAGER Laza Călin Mircea



STAT DE FUNCȚII

Nr. crt.	Structura	Funcția contractuală		Treapta profesională	Nivelul studiilor	Cuantum post	Numele și prenumele
		de conducere	de execuție				
COMITET DIRECTOR - 4 POSTURI							
1	Manager			II	S	1	LAZA CALIN-MIRCEA
2	Director medical			II	S	1	DEMETER IOAN
3	Director financiar contabil			II	S	1	STANESCU VETUTA
4	Director de ingrijiri interimar			II	S	1	MILITARU LENUTA CORINA
SECȚIA A.T.I. - 67 POSTURI							
Paturi: 26; din care: Secție 21; Comp. Toxicologie 5							
1	Medic primar-sef sectie			II	S	1	NEAGU DANUT
2	Medic primar		Medic primar		S	1	CAPRARIN DIANA
3	Medic primar		Medic primar		S	1	KOVACS IOANA
4	Medic specialist		Medic specialist		S	1	ILIE GABRIEL FLORIN
5	Medic specialist		Medic specialist		S	1	ROSU SILVIU NICOLAE
6	Medic specialist		Medic specialist		S	1	vacant
7	Medic primar		Medic primar		S	1	vacant
8	Medic primar		Medic primar		S	1	vacant
9	Medic primar		Medic primar		S	1	vacant
10	Asistent medical-sef		Asistent medical-sef	principal	PL	1	BODREANU CORNELIA
11	Asistent medical		Asistent medical	principal	PL	1	AXENTE MARIANA
12	Asistent medical		Asistent medical	principal	PL	1	BOZAN MARIA
13	Asistent medical		Asistent medical	principal	PL	1	BROTEA MARIANA
14	Asistent medical		Asistent medical	principal	PL	1	BUTUC CORINA
15	Asistent medical		Asistent medical	principal	PL	1	COSTEA GEORGETA
16	Asistent medical		Asistent medical	principal	PL	1	DARAU LUCIA IOSANA
17	Asistent medical		Asistent medical	principal	PL	1	FARCA DANIELA
18	Asistent medical		Asistent medical	principal	PL	1	GABOR BIANCA LIANA
19	Asistent medical		Asistent medical	principal	PL	1	GHIERGHE ALINA VASILICA
20	Asistent medical		Asistent medical	principal	PL	1	JUNEA MARIANA CRISTINA
21	Asistent medical		Asistent medical	principal	PL	1	LEMNE ENIKO
22	Asistent medical		Asistent medical	principal	PL	1	LUDUSAN EUGENIA
23	Asistent medical		Asistent medical	principal	PL	1	MAGDA INGRID
24	Asistent medical		Asistent medical	principal	S	1	MELNIC TEODOR CONSTANTIN
25	Asistent medical		Asistent medical	principal	PL	1	NEAMT DANIELA MIOARA

26		Asistent medical	principal	PL	1	OGIOIU NINA
27		Asistent medical	principal	PL	1	ONCIUL LACRAMIOARA
28		Asistent medical	principal	PL	1	OPREAN RAMONA ELENA
29		Asistent medical	principal	S	1	PAP CARMEN
30		Asistent medical	principal	SSD	1	PASCU DIANA
31		Asistent medical	principal	SSD	1	POPESCU MONICA
32		Asistent medical	principal	S	1	PREDA FLORIANA
33		Asistent medical	principal	PL	1	RAT DORINA
34		Asistent medical	principal	PL	1	SCHLUNSKY ANA MARIA
35		Asistent medical	principal	S	1	SESOVICI SILVIA
36		Asistent medical	principal	PL	1	SMEU MIRELA AMELIA
37		Asistent medical	principal	PL	1	SOREANU BIANCA TATIANA
38		Asistent medical	principal	PL	1	STANCI LAVINIA SIMONA
39		Asistent medical	principal	PL	1	STEFAN ELENA
40		Asistent medical	principal	PL	1	TOADER GHEORGHE
41		Asistent medical	principal	PL	1	TOMUTA RAMONA OFELIA
42		Asistent medical	principal	PL	1	TURZAI SILVIA
43		Asistent medical	principal	PL	1	VALEA ILEANA
44		Asistent medical	principal	PL	1	VASILE LUMINITA
45		Asistent medical		PL	1	MAROSAN SZIDONIA
46		Asistent medical		PL	1	PETCU DANIELA FELICIA
47		Asistent medical		PL	1	POP PETRONELA ELENA
48		Statistician medical	principal	M	1	ANDRONE NICOLETA DELIA
49		Asistent medical		PL	1	vacant
50		Asistent medical	principal	PL	1	vacant
51		Asistent medical	principal	PL	1	vacant
52		Infirmiera		G	1	ALBA ANA
53		Infirmiera		G	1	ANITA ELENA IRINA
54		Infirmiera		G	1	BOCIOACA NICOLETA
55		Infirmiera		G	1	BORDEA MARCELA - DANA
56		Infirmiera		G	1	CRACIUN CARMEN MARINELA
57		Infirmiera		G	1	GERMAN VIRGINICA
58		Infirmiera		G	1	ILLE MARIA
59		Infirmiera		G	1	RADU RAMONA
60		Infirmiera		G	1	ROZNOV CARMEN
61		Infirmiera		G	1	STOICHITOIU LILIANA
62		Brancardier		G	1	PACURAR DORIN CORNEL
63		Brancardier		G	1	VULPESCU CIPRIAN
64		Ingrijitoare		G	1	MIHAILESCU VERONICA
65		Ingrijitoare		G	1	vacant
66		Ingrijitoare		G	1	vacant
67		Ingrijitoare		G	1	vacant

UNITATEA DE TRANSFUZIE SANGUINĂ - 6 POSTURI

1	Asistent medical		PL	1	vacant
2	Asistent medical		PL	1	vacant
3	Asistent medical		PL	1	vacant
4	Asistent medical		PL	1	vacant
5	Statistician medical		M	1	vacant
6	Îngrijitoare		G	1	vacant

COMPARTIMENT NEONATOLOGIE - 30 POSTURI

Paturi: 18; din care: Comp. Neonatologie : 8; Comp. Terapie Intensiva : 5; Comp. Prematuri : 5

1	Medic primar		S	1	IONESCU BUFLEA MARINELA
2	Medic primar		S	1	LUCA PARASCHIVA
3	Medic primar		S	1	MATASARU ALINA HELGA
4	Medic primar		S	1	vacant
5	Asistent medical	principal	PL	1	CUJAVA LUMINITA
6	Asistent medical	principal	PL	1	DUMITRESCU MARIANA
7	Asistent medical	principal	PL	1	IACOB LIGIA
8	Asistent medical	principal	S	1	IANOSI ECATERINA
9	Asistent medical	principal	PL	1	POP VIRGINIA MARIA
10	Asistent medical	principal	PL	1	PRICOP ELENA
11	Asistent medical	principal	PL	1	VRACIU RODICA
12	Asistent medical		PL	1	BOANTA ROZALIA
13	Asistent medical		PL	1	GLIGOR MIHAELA VIOLETA
14	Asistent medical		PL	1	LUNGU MARIANA
15	Asistent medical	principal	PL	1	vacant
16	Asistent medical		PL	1	vacant
17	Asistent medical		PL	1	vacant
18	Asistent medical		PL	1	vacant
19	Statistician medical		M	1	vacant
20	Infirmera		G	1	ANDONE VALERICA
21	Infirmera		G	1	LUCACIU LILIANA GABRIELA
22	Infirmera		G	1	MOISIUC RODICA
23	Infirmera		G	1	NEGRILA VIOLETA LILIANA
24	Infirmera		G	1	POIENAR ILEANA
25	Infirmera		G	1	SINA LIOARA DANIELA
26	Infirmera		G	1	vacant
27	Infirmera		G	1	vacant
28	Infirmera		G	1	vacant
29	Infirmera		G	1	vacant
30	Îngrijitoare		G	1	vacant

SECTIA OBSTETRICA-GINECOLOGIE - 50 POSTURI

Paturi: 30; din care: Sectie 30

1	Medic primar-sef sectie		I	S	1	STANESCU ROMEO
2	Medic primar			S	1	CLEPCE SERBAN
3	Medic primar			S	1	DEMETER RODICA
4	Medic specialist			S	1	POP RALUCA BOGDANA
5	Medic primar			S	1	vacant
6	Medic primar			S	1	vacant
7	Asistent medical-sef		principal	S	1	CORDEA MARIA MIHAELA
8	Asistent medical		principal	PL	1	ATINGE CAMELIA
9	Asistent medical		principal	PL	1	BARBU MIHAELA LILIANA
10	Asistent medical		principal	PL	1	COTET ANGELA
11	Asistent medical		principal	S	1	FARCAS IULIANA CARMEN
12	Asistent medical		principal	PL	1	FOLTUT FELICIA SILVANA
13	Asistent medical		principal	PL	1	FOLTUT VIOLETA LEONTINA
14	Asistent medical		principal	PL	1	GHERMAN DANIELA
15	Asistent medical		principal	PL	1	HUIET ADRIANA MIHAELA
16	Asistent medical		principal	PL	1	MANEA SIMONA ELENA
17	Asistent medical		principal	PL	1	MUNTEANU MIOARA
18	Asistent medical		principal	PL	1	PANTILE ANA SIMONA
19	Asistent medical		principal	PL	1	RADU GEORGETA
20	Asistent medical		principal	PL	1	ROVINAR LILIANA FELICIA
21	Asistent medical		principal	PL	1	VASILIU ELENA
22	Asistent medical			PL	1	ILCA MANUELA CORINA
23	Asistent medical			PL	1	MARIAN CRISTINA
24	Asistent medical			PL	1	SCUTARU ADRIANA
25	Asistent medical			PL	1	SILASI DARIA DANIELA
26	Moasa		principala	S	1	ARDELEAN MARIA
27	Moasa		principala	S	1	BOTA IONELA CARMEN
28	Moasa		principala	S	1	MIHAIASA RODICA
29	Moasa		principala	S	1	RAT ANCA
30	Moasa		principala	S	1	TIF DIANA EUGENIA
31	Statistician medical		principal	M	1	FURCA DANA
32	Asistent medical		principal	PL	1	vacant
33	Asistent medical		principal	PL	1	vacant
34	Asistent medical		principal	PL	1	vacant
35	Asistent medical			PL	1	vacant
36	Infirmiera			G	1	FLORICAN ANGELA
37	Infirmiera			G	1	FODOR MARIA ECATERINA
38	Infirmiera			G	1	KOJAN MARIA
39	Infirmiera			G	1	MOGA FLORICA
40	Infirmiera			G	1	MORAR IRINA MARIA

41		Infiriera			G	1	NASTAC VASILICA
42		Infiriera			G	1	PARFENIE FLORENTINA
43		Infiriera			G	1	POPA EUGENIA
44		Infiriera			G	1	SAV NICULINA
45		Infiriera			G	1	TALAGIU ELENA COSINA
46		Infiriera			G	1	TODERAS SIDONIA
47		Ingrijitoare			G	1	BOTICI RAMONA CRISTINA
48		Infirier		debutant	G	1	FRUNZA LUCIAN
49		Infiriera			G	1	vacant
50		Infiriera			G	1	vacant

SECTIA CHIRURGIE GENERALA - 70 POSTURI

Patuti: 75; din care: Sectie 48: Comp.Chir.Maxilo-Faciala 5; Comp.Neurochir. 10; Comp.Chir.si.Ortop.Ped. 5; Comp.Chir.Toracica 7

1		Medic primar-sef sectie		II	S	1	BLENDEA MARIUS VASILE
2		Medic primar			S	1	BAGACEANU POPA RAUL
3		Medic primar			S	1	FOTESCU NICOLAE RADU
4		Medic primar			S	1	RADOI VASILE
5		Medic primar			S	1	STOICA ADRIAN LEONARD
6		Medic primar			S	1	TOMA DAN CRISTIAN
7		Medic primar			S	1	GROZA LIVIU
8		Medic primar			S	1	POP CIPRIAN IOAN
9		Medic specialist			S	1	DOROGA SORIN NICOLAE
10		Medic specialist			S	1	FLUIERAS SEBASTIAN NICOLAE
11		Medic specialist			S	1	GIRLEANU LAVINIA
12		Medic specialist			S	1	STOICESCU VLADIMIR
13		Medic primar			S	1	vacant
14		Asistent medical-sef		principal	PL	1	CARABAS VIORICA
15		Asistent medical		principal	PL	1	ACHIMESCU CORINA
16		Asistent medical		principal	PL	1	BOLDURA LACRIMIOARA
17		Asistent medical		principal	PL	1	BRICIERU ANDREEA
18		Asistent medical		principal	PL	1	CIOBOTARU DELIA CRISTINA
19		Asistent medical		principal	PL	1	CIOMAG CLAUDIA
20		Asistent medical		principal	PL	1	COCIS ELENA
21		Asistent medical		principal	PL	1	COCOTA LILIANA
22		Asistent medical		principal	PL	1	FILIMON VIORICA DANELA
23		Asistent medical		principal	PL	1	GAVRILUTA CAMELIA
24		Asistent medical		principal	PL	1	HUH MARIA ANISOARA
25		Asistent medical		principal	PL	1	KOVACS KATALIN
26		Asistent medical		principal	PL	1	LUNGU MARIA ADELINA
27		Asistent medical		principal	PL	1	MIHOC VIVIANA GABRIELA
28		Asistent medical		principal	PL	1	NAN LAVINIA
29		Asistent medical		principal	PL	1	NOROC NICOLETA

30	Asistent medical	principal	PL	1	PRICOB PETRONELA ADELINA
31	Asistent medical	principal	PL	1	RADU SILVIA
32	Asistent medical	principal	PL	1	ROTEA MIRONELA LOREDANA
33	Asistent medical	principal	PL	1	STREANGA MARIA
34	Asistent medical	principal	PL	1	SUCIU CLAUDIA
35	Asistent medical	principal	PL	1	SZABO MAGDOLNA
36	Asistent medical	principal	PL	1	SZEMCSUK VIOLETA
37	Asistent medical	principal	PL	1	TODOR ADINA
38	Asistent medical	principal	PL	1	TURBUTIU RODICA MIOARA
39	Asistent medical		PL	1	BOTA RAMONA-CLAUDIA
40	Asistent medical		PL	1	GYORFI ANA IRMA
41	Asistent medical		PL	1	KOVACS ANDREEA ANGELA
42	Asistent medical		PL	1	MERA IONEL
43	Statistician medical	principal	M	1	FARCAS RAMONA TATIANA
44	Asistent medical	principal	PL	1	vacant
45	Asistent medical	principal	PL	1	vacant
46	Asistent medical	principal	PL	1	vacant
47	Asistent medical		SSD	1	vacant
48	Infirmiera		G	1	BANCIU RODICA CRISTINA
49	Infirmiera		G	1	BEDEA RODICA
50	Infirmiera		G	1	CERGHEDEAN ANGELA LEONTINA
51	Infirmiera		G	1	CHICIREANU ELENA
52	Infirmiera		G	1	DUBARIU RODICA
53	Infirmiera		G	1	FAUR DORINA CRISTINA
54	Infirmiera		G	1	HANES ADRIANA VETUTA
55	Infirmiera		G	1	LITEANU LORENA
56	Infirmiera		G	1	MICLOS ILEANA
57	Infirmiera		G	1	POPA ADRIANA
58	Infirmiera		G	1	RUS MARIOARA
59	Infirmiera		G	1	SOMFELEANU VIORICA
60	Infirmiera		G	1	ZAVOIANU VICTORIA
61	Infirmiera	debutant	G	1	BOZANDEAN-OANCEA RAMONA ANDREEA
62	Ingrjitoare		G	1	IACOB MARIANA ROZALIA
63	Ingrjitoare		G	1	MICUTIU CRISTINA-ADINA
64	Ingrjitoare		G	1	MOGA MARIA FLORICA
65	Brancardier		G	1	ANCA ANDREI OCTAVIAN
66	Brancardier		G	1	AVRAM MARINEL
67	Brancardier		G	1	CANDLER OVIDIU SORIN
68	Infirmiera		G	1	vacant
69	Infirmiera		G	1	vacant
70	Infirmiera		G	1	vacant

SECTIA ORTOPEDIE SI TRAUMATOLOGIE - 36 POSTURI

Patuti: 38; din care: Sectie 38

1	Medic primar-sef sectie		II	S	1	BRINDA IOAN
2	Medic primar			S	1	PLATON ION
3	Medic primar			S	1	POP DAN VASILE
4	Medic primar			S	1	TIMAR GRIGORE
5	Medic specialist			S	1	vacant
6	Kinetoterapeut			S	1	BOZDOG BOGDAN COSMIN
7	Asistent medical-sef		principal	S	1	SZEKELY MARIANA
8	Asistent medical		principal	PL	1	BOGOS ELISABETA
9	Asistent medical		principal	PL	1	CODOBAN SIMONA
10	Asistent medical		principal	PL	1	GHERGHE MARIANA
11	Asistent medical		principal	PL	1	IACOB ELENA ANDREEA
12	Asistent medical		principal	PL	1	IANC SANDA ILEANA
13	Asistent medical		principal	PL	1	MANASIE CARMEN SOFIA
14	Asistent medical		principal	PL	1	POPESCU MIRELA
15	Asistent medical		principal	PL	1	RIZO IOAN
16	Asistent medical		principal	PL	1	ROSIAN MARCELA
17	Asistent medical		principal	PL	1	SMEU DANIEL
18	Asistent medical		principal	PL	1	STEFANALINA MIHAELA
19	Asistent medical		principal	PL	1	TULEA CLAUDIA
20	Asistent medical			PL	1	BRUSTUREAN CARMEN
21	Asistent medical			PL	1	BURADA MIHAELA DORICA
22	Statistician medical		principal	M	1	OLARIU MARGARETA
23	Asistent medical			SSD	1	vacant
24	Infirmiera			G	1	BOITI RAMONA
25	Infirmiera			G	1	BOTA ILEANA
26	Infirmiera			G	1	COJOCARU TANIUSA
27	Infirmiera			G	1	IACOB CODRUTA ANGELA
28	Infirmiera			G	1	MARIAN MARIA
29	Infirmiera			G	1	POPA OLIVA SIDONIA
30	Infirmiera			G	1	SABAU EMILIA OTILIA
31	Infirmiera			G	1	SUCIU VIORICA
32	Ingrjitoare			G	1	CHEREGI DANIELA GEORGETA
33	Ingrjitoare			G	1	SICOE MIHAELA
34	Brancardier			G	1	CRIHANA NICOLAE
35	Brancardier			G	1	VASIU RADU PETRU
36	Infirmiera			G	1	vacant

SECTIA UROLOGIE - 27 POSTURI

Patuti: 30; din care: Sectie 30

1	Medic primar-sef sectie								
1									1 RADULESCU IOAN
2	Medic primar								1 DAIAN ISAIIA DAVID
3	Medic primar								1 MITRANOVICI EMIL
4	Medic specialist								1 vacant
5	Asistent medical-sef			principal					1 LUTU RODICA
6	Asistent medical			principal					1 BULC LUCIA
7	Asistent medical			principal					1 CISMAS ADA ELENA
8	Asistent medical			principal					1 DMEAN DORINELA
9	Asistent medical			principal					1 HODOR MARCELA
10	Asistent medical			principal					1 HOJBOTA LAURA
11	Asistent medical			principal					1 LUCA ROXANA ALINA
12	Asistent medical			principal					1 PRUSUS CRISTIAN
13	Asistent medical			principal					1 SARKOZI ANA MARIA
14	Asistent medical			principal					1 SOCACI ANA
15	Asistent medical			principal					1 SOMAN ALINA LIVIA
16	Asistent medical			principal					1 STRATICA MANUELA
17	Statistician medical								1 STOICA ADELA
18	Asistent medical								1 vacant
19	Infirmiera								1 BOTEZATU ANICA
20	Infirmiera								1 DUDA ALINA
21	Infirmiera								1 GUIA ADELA MONICA
22	Infirmiera								1 HAIDUC MARIA CRISTINA
23	Infirmiera								1 PETER NELIA
24	Infirmiera								1 SELEJAN MARIANA DANIELA
25	Infirmiera								1 vacant
26	Ingrjitoare								1 vacant
27	Brancardier								1 vacant

COMPARTIMENT CHIRURGIE PLASTICA - MICROCHIRURGIE - 28 POSTURI

Patuti: 21; din care: Compartiment 16; Arsi 5

1	Medic primar								1 CLEPCE CORINA CRISTINA
2	Medic primar								1 LUCULESCU PAULA
3	Medic specialist								1 vacant
4	Asistent medical			principal					1 ANCA ALINA
5	Asistent medical			principal					1 BOTEZAT CECILIA
6	Asistent medical			principal					1 CAPATAN MIHAELA
7	Asistent medical			principal					1 DEACONU OLIMPIA
8	Asistent medical			principal					1 FLOREA CAMELIA
9	Asistent medical			principal					1 FLORESCU MARIANA
10	Asistent medical			principal					1 GHIBU AURICA
11	Asistent medical			principal					1 LUCA CRISTINA TITIANA
12	Asistent medical			principal					1 TITEL LENUȚA

13		Asistent medical	principal	PL	1	URSU NICOLITA
14		Statistician medical	principal	M	1	MORARU NICOLETA-IULIANA
15		Asistent medical		PL	1	vacant
16		Asistent medical		PL	1	vacant
17		Asistent medical		PL	1	vacant
18		Infirmiera		G	1	BALUTA MARIA
19		Infirmiera		G	1	HENT MILICA
20		Infirmiera		G	1	JESCU VIORICA
21		Infirmiera		G	1	MANICAN GEANINA DACIANA
22		Infirmiera		G	1	MIELUT MARIANA LENUTA
23		Infirmiera		G	1	ORDEAN GHEORGHITA
24		Infirmiera		G	1	PAVEL DORINA-MARIANA
25		Infirmiera		G	1	vacant
26		Infirmiera		G	1	vacant
27		Infirmiera		G	1	vacant
28		Infirmiera		G	1	vacant

SECTIA OFTALMOLOGIE - 25 POSTURI

Paturi: 25; din care: Sectie 25

1		Medic primar-sef sectie	I	S	1	MICLAUS DIANA
2		Medic primar		S	1	ANGELESCU LACRIMA CARMEN
3		Medic primar		S	1	ANGELESCU REMUS
4		Medic primar		S	1	CABA CORINA
5		Medic primar		S	1	FEIER CORINA MONICA MARIA
6		Medic specialist		S	1	vacant
7		Asistent medical-sef	principal	PL	1	HAJDU ILDIKO HERIETTE
8		Asistent medical	principal	PL	1	BALEA NICOLETA
9		Asistent medical	principal	PL	1	BOBAILA CLAUDIA ELENA
10		Asistent medical	principal	PL	1	BODEA NICOLETA LUMINITA
11		Asistent medical	principal	PL	1	BUMBU MIHAELA ILEANA
12		Asistent medical	principal	PL	1	DORNEANU ANCA MARIA
13		Asistent medical	principal	PL	1	DUBARIU RAMONA
14		Asistent medical	principal	PL	1	HAJDU ADRIANA
15		Asistent medical	principal	PL	1	KARSAI RAMONA
16		Asistent medical	principal	PL	1	MOLDOVAN TEODORA MARIA
17		Asistent medical	principal	PL	1	MUNTEANU VIOLETA FLORICA
18		Asistent medical	principal	PL	1	PETRUSE GABRIELA SIMONA
19		Statistician medical		M	1	TARLEA LUIZA TUDORA
20		Asistent medical		PL	1	vacant
21		Infirmiera		G	1	CAZAN MARIA NICOLETA
22		Infirmiera		G	1	DUBAR LUCIA
23		Infirmiera		G	1	POPA MARIOARA
24		Infirmiera		G	1	STOIA FELICIA CORNELIA
25		Infirmiera		G	1	TOMUTA CRISTINA

SECTIA ORL - 23 POSTURI

Patuti: 25; din care: Sectie 25

1	Medic primar-sef sectie	I	S	1	MARCUS ANTONETA GRATIELA
2	Medic primar		S	1	BOGDAN ADRIAN
3	Medic specialist		S	1	BALGRADEAN LUMINITA MARIA
4	Medic primar		S	1	vacant
5	Medic primar		S	1	vacant
6	Asistent medical-sef	principal	S	1	STANCULESCU FLORICA MARINELA
7	Asistent medical	principal	PL	1	BOTA IRINA
8	Asistent medical	principal	S	1	CIOBOTA CONSUELA
9	Asistent medical	principal	PL	1	ERCSI EMESE
10	Asistent medical	principal	S	1	FRENTONI CLAUDIA
11	Asistent medical	principal	S	1	MELNIC DOINA
12	Asistent medical	principal	S	1	SZATMARI BRIGITTA
13	Asistent medical	principal	PL	1	VARDEA IONELA
14	Asistent medical	principal	PL	1	HORVATH AMALIA CARMEN
15	Asistent medical		PL	1	ROTARU MONICA
16	Asistent medical		PL	1	SAV GAROFITA-LENUTA
17	Statistician medical		M	1	vacant
18	Infirmiera		G	1	LAPUGEAN LAVINICA
19	Infirmiera		G	1	LIA MARIANA SIMONA
20	Infirmiera		G	1	NEMES CORINA AGAFTEA
21	Infirmiera		G	1	SCORNEA ANCUETA MARIA
22	Infirmiera		G	1	SERBAN AURELIA
23	Infirmiera		G	1	VLAD CARMEN VIOLETA

SECTIA CARDIOLOGIE - 35 POSTURI

Patuti: 45; din care: Sectie 35; Comp. Terapie Intensiva Coronarieni 10

1	Medic primar-sef sectie	II	S	1	BASARAB GHEORGHE VASILE
2	Medic primar		S	1	CRISNIC ANA
3	Medic specialist		S	1	STOICA DIANA ANDREEA
4	Medic primar		S	1	BLAJ CONSTANTIN SABIN
5	Medic primar		S	1	vacant
6	Medic specialist		S	1	vacant
7	Asistent medical-sef	principal	S	1	SANDOR AURORA MARIANA
8	Asistent medical	principal	PL	1	ACASANDREI ENIKO
9	Asistent medical	principal	PL	1	ALMASAN DIANA NICOLETA
10	Asistent medical	principal	PL	1	BARBU SIMONA VIORICA
11	Asistent medical	principal	PL	1	BOLD LUMINITA MONICA
12	Asistent medical	principal	PL	1	CIBIAN CARMEN
13	Asistent medical	principal	PL	1	CIUCA LIANA
14	Asistent medical	principal	PL	1	CORNEA GEORGETA MIRELA
15	Asistent medical	principal	PL	1	DRAIA DANIELA MARIANA

16		Asistent medical	principal	PL	1	FOGOROSI CARMEN SOFIA
17		Asistent medical	principal	PL	1	MADASA AURELIA
18		Asistent medical	principal	PL	1	MALEA CLAUDIA LAVINIA
19		Asistent medical	principal	PL	1	MIGNEA MECIKOWSKI CRISTINA
20		Asistent medical	principal	PL	1	NANDREA ILDIKO
21		Asistent medical	principal	S	1	ROMAN KATALIN
22		Asistent medical	principal	PL	1	VISAN SIMONA LOREDANA
23		Asistent medical		PL	1	LUNG CRISTINA LOREDANA
24		Statistician medical		M	1	SERESTELY LEVENTE SZABOLCS
25		Infirmiera		G	1	ANDRICA MARIANA ANGELICA
26		Infirmiera		G	1	ANGELESCU LAURA
27		Infirmiera		G	1	DOBREA ECATERINA
28		Infirmiera		G	1	PEPTAN IOANA
29		Infirmiera		G	1	STIOLINA DORINA NICOLETA
30		Ingrijitoare		G	1	MOLDOVAN CARMEN
31		Ingrijitoare		G	1	MUSESCU ILEANA
32		Infirmiera		G	1	vacant
33		Infirmiera		G	1	vacant
34		Infirmiera		G	1	vacant
35		Infirmiera		G	1	vacant

SECTIA MEDICINA INTERNA I - 38 POSTURI

Patuti: 45; din care: Sectie 30; Comp.Endocrin,5;Comp.Nefr. 5;Comp.gastroent 5

1		Medic primar-sef sectie del.				
2		Medic primar	II	S	1	PREDOIAS MINA
3		Medic primar		S	1	BADAU VALENTIN TEODOR
4		Medic primar		S	1	BLENDEA DANIELA
5		Medic primar		S	1	BUDURA RUSU ROMANA
6		Medic primar		S	1	LUPSE DIANA
7		Medic primar		S	1	NEGRILA MIHAELA CECILIA
8		Medic specialist		S	1	vacant temporar
9		Asistent medical-sef		S	1	vacant
10		Asistent medical	principal	PL	1	IOANI SIMONA
11		Asistent medical	principal	PL	1	CHELARIU CRISTINA
12		Asistent medical	principal	PL	1	CRAINIC MIHAELA
13		Asistent medical	principal	PL	1	GABOR ANGELA
14		Asistent medical	principal	PL	1	GIURGIU FLORINELA MARIA
15		Asistent medical	principal	PL	1	KOVALCSIK KLARA
16		Asistent medical	principal	PL	1	LUPULESCU SIMONA MARIA
17		Asistent medical	principal	PL	1	MARGINEAN CLAUDIA IULIANA
18		Asistent medical	principal	PL	1	MOTORGA GEORGETA
19		Asistent medical	principal	PL	1	NEGRU ALINA MARIA
		Asistent medical	principal	S	1	PETRUSE ALINA LOREDANA

20	Asistent medical	principal	PL	1	POPA ANCUȚA ADELINA
21	Asistent medical	principal	PL	1	SERBAN MARIANA IULIANA
22	Asistent medical	principal	S	1	SOLOMON MIHAELA
23	Asistent medical		PL	1	BAL SABINA
24	Asistent medical		PL	1	DANCILA LACRAMIOARA LENUTA
25	Asistent medical		PL	1	MALAIU ANA MARIA
26	Asistent medical		PL	1	MIHU CLAUDIA FLORINA
27	Statistician medical		M	1	ZUGRAVU NICOLETA-DANIELA
28	Asistent medical	principal	PL	1	vacant
29	Asistent medical	principal	PL	1	vacant
30	Asistent medical		PL	1	vacant
31	Infirmiera		G	1	DALOG CORNELIA
32	Infirmiera		G	1	OLARASU GABRIELA
33	Infirmiera		G	1	PETRESC MIHAELA ANISOARA
34	Infirmiera		G	1	PETRUT ELENA
35	Infirmiera		G	1	VANCEA ILEANA
36	Infirmiera		G	1	VARGA EMILIA GEORGETA
37	Ingrijitoare		G	1	ALBA RAMONA
38	Ingrijitoare		G	1	vacant

SECTIA MEDICINA INTERNA II - 45 POSTURI

Paturi: 70; din care: Sectie 34; Comp.Alergologie si Imunol. Clinica 12; Comp.Hematologie 12; Comp.Diab.zaharat,Nutritie si Bol. Met.12; Lab.endoscopie digestiva

1	Medic primar-sef sectie del.	II	S	1	RAD LIVIU
2	Medic primar		S	1	AVRAM RODICA IOANA
3	Medic primar		S	1	GLODEAN ONESC BIANCA
4	Medic primar		S	1	MAGHERU DAN ADRIAN
5	Medic primar		S	1	ROMAN TANIA
6	Medic primar		S	1	vacant temporar
7	Medic primar		S	1	vacant
8	Medic primar		S	1	vacant
9	Asistent medical-sef	principal	PL	1	CLEJ EMILIA
10	Asistent medical	principal	PL	1	ALBA ALINA
11	Asistent medical	principal	S	1	ALBA FLORINA
12	Asistent medical	principal	S	1	AMBROSEI ELENA CRISTINA
13	Asistent medical	principal	PL	1	BOZAN CARMEN MIHAELA
14	Asistent medical	principal	PL	1	BOZESAN IOANA
15	Asistent medical	principal	PL	1	BUTINCU BIANCA VANESA
16	Asistent medical	principal	S	1	CHERECHEs EVA
17	Asistent medical	principal	PL	1	COTIUGA SIMONA
18	Asistent medical	principal	S	1	DRAGOS ANTONELA MARIA
19	Asistent medical	principal	PL	1	HAIUC MIRELA
20	Asistent medical	principal	S	1	KASLER MONICA
21	Asistent medical	principal	PL	1	PRUNA EMILIA DOAGA
22	Asistent medical	principal	PL	1	PURDA MIHAELA

23	Asistent medical	principal	S	1	PURTUC OLIVIA CLAUDIA
24	Asistent medical	principal	PL	1	STANCIULESCU LUMINITA
25	Asistent medical		S	1	BARABAS IULIANA CLAUDIA
26	Asistent medical		PL	1	COTOARA CRISTINA-ELENA
27	Asistent medical		PL	1	FLOREA DANIELA
28	Asistent medical		PL	1	HERBEI ALEXANDRA IOANA
29	Asistent medical		PL	1	MANATIE EVA MARIA
30	Asistent medical		PL	1	MIREA CRISTINA RAMONA
31	Asistent medical		PL	1	VLAICU OANA EMANUELA
32	Statistician medical	principal	M	1	SOANCA ADRIANA
33	Statistician medical		M	1	MOLDOVAN RODICA GABRIELA
34	Statistician medical		M	1	vacant
35	Infirmiera		G	1	ALBA MARIANA LENUTA
36	Infirmiera		G	1	BALAN MARIA
37	Infirmiera		G	1	CAINANT LUCICA MINODORA
38	Infirmiera		G	1	DOBRA ADINA
39	Infirmiera	debutant	G	1	TAGARTA ELENA
40	Ingrijitoare		G	1	JURCA CRISTINA DANIELA
41	Ingrijitoare		G	1	RENGHEA MARIANA
42	Ingrijitoare		G	1	RESIGA ILEANA
43	Infirmiera		G	1	vacant
44	Infirmiera		G	1	vacant
45	Brancardier		G	1	vacant

SECTIA BOLI INFECTIOASE - 20 POSTURI

Patuti: 25, din care: Sectie 25

1	Medic primar-sef sectie	I	S	1	ONICIUC ANTOANELA DANIELA
2	Medic primar		S	1	DANCESCU MARIA
3	Medic primar		S	1	vacant
4	Asistent medical-sef	principal	PL	1	PETRESC SILVIA
5	Asistent medical	principal	PL	1	BERINDEIE MIHAELA
6	Asistent medical	principal	PL	1	COSTEA IULIANA MIRELA
7	Asistent medical	principal	PL	1	CRISAN ALEXANDRA MIOARA
8	Asistent medical	principal	S	1	LOGOJAN ALINA VIOLETA
9	Asistent medical	principal	PL	1	MOTA ELISABETA
10	Asistent medical	principal	S	1	INELEGA SORINA LIGELA
11	Asistent medical	principal	PL	1	SZASZ ILONCA
12	Asistent medical		PL	1	BARASTEAN OLGA
13	Statistician medical	principal	M	1	GLOGOVETEAN MONIKA
14	Infirmiera		G	1	BALEA IRINA
15	Infirmiera		G	1	CHIPERI DORINELA
16	Infirmiera		G	1	LUCANIUC REGHINA
17	Infirmiera		G	1	PINTEA MARIA
18	Infirmiera		G	1	STRATICA VASILICA
19	Infirmiera		G	1	vacant
20	Brancardier		G	1	vacant

SECTIA ONCOLOGIE MEDICALA - 29 POSTURI

Patuti: 30; din care: Sectie 25; Radioterapie 5

1	Medic primar-sef sectie del.		I	S	1	RUGEA TIBERIU VALERIU
2	Medic specialist			S	1	POPA ALINA MAURA
3	Medic specialist			S	1	vacant
4	Medic specialist			S	1	vacant
5	Psiholog		principal	S	1	BOTAS DANIELA
6	Asistent medical-sef		principal	S	1	LAZEA MIOARA AURA
7	Asistent medical		principal	PL	1	GABOR DORINA
8	Asistent medical		principal	PL	1	HERBEI SIMONA RODICA
9	Asistent medical		principal	PL	1	IRIMIE EMILIA MARIA
10	Asistent medical		principal	PL	1	IVAN DANIELA
11	Asistent medical		principal	PL	1	MALAESTEAN IONICA
12	Asistent medical		principal	PL	1	MARTIN LENUTA
13	Asistent medical		principal	PL	1	MORARU LAURA
14	Asistent medical		principal	PL	1	MOTOC FLORINA
15	Asistent medical		principal	SSD	1	MUNTEANU MARIANA ADRIANA
16	Asistent medical		principal	PL	1	SILASI DELIA CARMEN
17	Asistent medical		principal	PL	1	VINCZE MARIA VIORICA
18	Asistent medical			PL	1	CORNEA CONSTANTA GABRIELA
19	Statistician medical		principal	M	1	LAZEA RAUL
20	Asistent medical			PL	1	vacant
21	Infirmiera			G	1	CAZU HOGMAN MONICA ELENA
22	Infirmiera			G	1	CIORTEA GABRIELA
23	Infirmiera			G	1	PLIOT MIHAELA ELENA
24	Infirmiera			G	1	RADU MITA
25	Infirmiera			G	1	SACOTA ANGELICA
26	Infirmiera			G	1	SORTAN TRAIAN
27	Infirmiera			G	1	TEAMPAU ELENA
28	Ingrijitoare			G	1	ILUTA EUGENIA GEORGETA
29	Brancardier			G	1	CHEREGI IOAN DANIEL

SECTIA NEUROLOGIE - 36 POSTURI

Patuti: 45; din care: Sectie 45

1	Medic primar-sef sectie		II	S	1	MIHU ANCA
2	Medic primar			S	1	BERTALAN LAVINIA
3	Medic primar			S	1	RUSAN ELENA
4	Medic primar			S	1	SAMOILESCU LUCICA
5	Medic primar			S	1	TANU ELENA GABRIELA
6	Medic specialist			S	1	vacant
7	Kinetoterapeut principal			S	1	OPREAN ILDIKO
8	Asistent medical-sef		principal	PL	1	CHIFOR DANIELA
9	Asistent medical		principal	PL	1	ANGHELINA GEORGIANA MANUELA
10	Asistent medical		principal	PL	1	BODAC VIORICA AURICA
11	Asistent medical		principal	PL	1	CORNE GABRIELA

12	Asistent medical		principal	PL	1	DRAGOMIR ADINA CLAUDIA
13	Asistent medical		principal	PL	1	MAGDA IRINA MARIA
14	Asistent medical		principal	PL	1	MAGDA MARANATA
15	Asistent medical		principal	PL	1	MITAR MARIANA
16	Asistent medical		principal	PL	1	NEGREA ADRIANA ROXANA
17	Asistent medical		principal	PL	1	SATALAN ELENA CRISTINA
18	Asistent medical		principal	PL	1	SIRB MIHAELA DANIELA
19	Asistent medical		principal	S	1	SOCACI CLAUDIA DANIELA
20	Asistent medical			PL	1	BOANCA EMILIA-ALINA
21	Asistent medical			PL	1	PASCU ELISABETA ALINA
22	Asistent medical			PL	1	SIMINA LUMINITA MIHAELA
23	Statistician medical		principal	M	1	MOISE ANISOARA
24	Infirmiera			G	1	ANTON MARIA
25	Infirmiera			G	1	DARADICS ELVIRA
26	Infirmier			G	1	DARADICS IULIU
27	Infirmiera			G	1	JELER SORINA
28	Infirmiera			G	1	JUDE CORINA
29	Infirmiera			G	1	NICOARA DANIELA
30	Infirmiera			G	1	POPA TATIANA
31	Infirmiera			G	1	SOIMAREANU CLAUDIA
32	Infirmiera			G	1	VADEAN RODICA
33	Brancardier			G	1	DODA MARIUS CRISTINEL
34	Brancardier			G	1	LAZAR DANUT
35	Infirmiera			G	1	vacant
36	Infirmiera			G	1	vacant

SECTIA PSIHIATRIE - 25 POSTURI

Patuti: 30; din care: Sectie 30

1	Medic primar-sef sectie		I	S	1	CORDEA TRAIAN
2	Medic primar			S	1	OIEGAR MONICA VENUSA
3	Medic primar			S	1	STANCI LUIGYA CLAUDIA
4	Medic specialist			S	1	vacant
5	Psiholog principal			S	1	FLOREA CLAUDIA SIMONA
6	Psiholog principal			S	1	GRAUR ADRIANA
7	Asistent medical-sef		principal	S	1	LOLEA ELENA NICOLETA
8	Asistent medical		principal	PL	1	COSMA LIDIA
9	Asistent medical		principal	PL	1	DRAGHICI NADIA MIHAELA
10	Asistent medical		principal	S	1	FILCU MIRELA VIOLETA
11	Asistent medical		principal	PL	1	GAT VOICHITA CONSUELA
12	Asistent medical		principal	S	1	GAVRILA LAURENTIA
13	Asistent medical		principal	PL	1	KORB LUCIANA MELANIA
14	Asistent medical		principal	SSD	1	MEGYERI MIHAELA
15	Asistent medical		principal	PL	1	TERTECI ADINA

16	Sora medicala	principal	M	1	VINTILA LUCIA RODICA
17	Statistician medical	principal	M	1	PACURAR ANA NICOLETA
18	Asistent medical		S	1	vacant
19	Asistent medical		PL	1	vacant
20	Infirmiera		G	1	BUDOIU-OANCEA ANAMARIA
21	Infirmiera		G	1	CAPATINA MARINELA FLORINA
22	Infirmiera		G	1	CIMPEAN STEFANICA
23	Infirmiera		G	1	CORNEA DOINITA
24	Infirmiera		G	1	VARADI COSMINA
25	Infirmiera		G	1	vacant

SECTIA PEDIATRIE - 55 POSTURI

Paturi: 45; din care: Sectie 30; Terapie Acuta 5; Comp.Cardologie 5; Comp.Neurologie Pediatrica 5

1	Medic primar-sef sectie		II	S	1	PAUL MIHAIELA
2	Medic primar			S	1	BAICEANU ADRIANA
3	Medic primar			S	1	BALEA IOANA MADALINA
4	Medic primar			S	1	OLTEAN SIMONA
5	Medic primar			S	1	POP LUMINITA
6	Medic primar			S	1	ROMAN EVA LAURA
7	Medic primar			S	1	SAVU MARIA
8	Medic specialist			S	1	JEFLEA DANIELA
9	Medic primar			S	1	vacant
10	Medic primar			S	1	vacant
11	Asistent social			S	1	vacant
12	Asistent medical-sef		principal	S	1	NAGY RENATA
13	Asistent medical		principal	PL	1	ANDRONIC LILIANA
14	Asistent medical		principal	PL	1	BARA ILDIKO
15	Asistent medical		principal	PL	1	CIHODARU DIANA GABRIELA
16	Asistent medical		principal	PL	1	FILIP ADINA
17	Asistent medical		principal	PL	1	GORCEA ELENA DANIELA
18	Asistent medical		principal	PL	1	GYENGE ILDIKO
19	Asistent medical		principal	S	1	IOSEPH SARA
20	Asistent medical		principal	PL	1	MIRAUTA GABRIELA
21	Asistent medical		principal	PL	1	NICOLESCU IOANA
22	Asistent medical		principal	S	1	PAPP IUDIT RITA
23	Asistent medical		principal	PL	1	PARPALEA IOANA MIRELA
24	Asistent medical		principal	PL	1	PATRICHE ELENA LAVINIA
25	Asistent medical		principal	S	1	PLETER MARIA ELENA
26	Asistent medical		principal	S	1	RADUICA DANIELA
27	Asistent medical		principal	PL	1	SLABU DORINA FELICIA
28	Asistent medical		principal	PL	1	STEF ADRIANA
29	Asistent medical		principal	PL	1	STOICA MELANIA
30	Asistent medical		principal	PL	1	URS AURELIA
31	Asistent medical		principal	PL	1	VLADU MARIA
32	Asistent medical		principal	PL	1	BENTEU CRISTINA
33	Asistent medical		PL	PL	1	CIOCAN MARIOARA

34	Asistent medical		S	1	MARIAN CORNELIA ELENA
35	Asistent medical		PL	1	MOGA ELENA RUXANDRA
36	Asistent medical		PL	1	SANDOR ALEXANDRA ELENA
37	Statistician medical		M	1	DEMIAN RAZVAN OVIDIU
38	Asistent medical	principal	PL	1	vacant
39	Asistent medical		PL	1	vacant
40	Infirmiera		G	1	ALBA CAMELIA VIOLETA
41	Infirmiera		G	1	DUMITRIU CRISTINA
42	Infirmiera		G	1	GHERMAN MARGHETI
43	Infirmiera		G	1	GULEAS ROZALIA
44	Infirmiera		G	1	MASNITA MARINICA
45	Infirmiera		G	1	NISTOR PANSELA
46	Infirmiera		G	1	PIRVA ELENA
47	Infirmiera		G	1	RADU DOINA MARINICA
48	Infirmiera	debutant	G	1	VIERU LILIANA
49	Ingrijitoare		G	1	CACEU EDIT
50	Ingrijitoare		G	1	DAMIAN GEORGETA
51	Ingrijitoare		G	1	PETERLECEAN ANA MARIA
52	Ingrijitoare		G	1	VLAD IONELA
53	Infirmiera		G	1	vacant
54	Infirmiera		G	1	vacant
55	Infirmiera		G	1	vacant

COMPARTIMENT DERMATOVENEROLOGIE - 21 POSTURI

Patuti: 20; din care: Compartiment 20

1	Medic primar		S	1	FOLEA MIRELA FLORINA
2	Medic primar		S	1	SELAR ADINA ZENAIDA
3	Medic primar		S	1	STEFAN DUMITRA
4	Medic specialist		S	1	STOICA CARMEN
5	Medic primar		S	1	vacant
6	Asistent medical	principal	PL	1	BUBOIU MARIA
7	Asistent medical	principal	PL	1	FULEP VOICHIITA
8	Asistent medical	principal	PL	1	LUPU ILEANA
9	Asistent medical	principal	PL	1	MARGAU MIRELA NELICA
10	Asistent medical	principal	PL	1	NICOARA SIMONA-IONELA
11	Asistent medical	principal	PL	1	POPESCU MIRELA MARIANA
12	Asistent medical	principal	PL	1	RESIGA LILIANA
13	Asistent medical		PL	1	CIUCULESCU ADELINA
14	Statistician medical	principal	M	1	PACURAR FLORIN
15	Asistent medical	principal	PL	1	vacant
16	Asistent medical	principal	PL	1	vacant
17	Infirmiera		G	1	DOLCESCU CAMELIA
18	Infirmiera		G	1	MARICIUC SILVICA
19	Infirmiera		G	1	VAIDEANU FLORICA
20	Infirmiera		G	1	vacant
21	Ingrijitoare		G	1	vacant

SECTIA RECUPERARE, MEDICINA FIZICA SI BALNEOLOGIE - 23 POSTURI

Patuti: 50; din care: Sectie 50

1	Medic primar-sef sectie	II	S	BICA IOAN
2	Medic primar		S	CIORTEA GABRIELA
3	Medic primar		S	vacant
4	Medic specialist		S	vacant
5	Kinetoterapeut		S	vacant
6	Asistent medical-sef	principal	PL	COTIGA CLAUDIA STEFANIA
7	Asistent medical	principal	PL	ANCUTESCU VLASIE CRISTINA
8	Asistent medical	principal	PL	BORDEIANU ELENA CORINA
9	Asistent medical	principal	PL	BRABETE FELICIA
10	Asistent medical	principal	PL	DAMIAN IULIANA CARMEN
11	Asistent medical	principal	PL	GHERGHELY ROZSI GYONGY
12	Asistent medical	principal	PL	KATO FLORICA
13	Asistent medical	principal	PL	POPA ADINA LIVIA
14	Asistent medical	principal	PL	SUBA CARMEN
15	Asistent medical	principal	PL	VLAD EUGENIA
16	Asistent medical		S	FILIMON MARIANA ELENA
17	Statistician medical		M	DUMITRESCU CARMEN DANIELA
18	Asistent medical		PL	vacant
19	Infirmiera		G	BOGDAN COSMINA MARCELA
20	Infirmiera		G	FILIP ELENA
21	Infirmiera		G	MEDREA MIHAELA ADRIANA
22	Infirmiera		G	SANDOR CAROLINA
23	Infirmiera		G	TAPUC MARIA

COMPARTIMENT REUMATOLOGIE - 14 POSTURI

Patuti: 15; din care: Compartiment 15

1	Medic primar		S	1 MICLAUS RADU
2	Medic primar		S	1 VELCHEREAN NICOLA MIHAELA
3	Asistent medical	principal	PL	1 ABRUDEAN DORINA
4	Asistent medical	principal	PL	1 JIC MIHAELA
5	Asistent medical	principal	PL	1 RACEU MARIA
6	Asistent medical		PL	1 GLAVU ANGELICA DANIELA
7	Asistent medical		PL	1 VOLLONCS ADRIANA CRINELA
8	Asistent medical	principal	PL	1 vacant
9	Asistent medical		PL	1 vacant
10	Infirmiera		G	1 ANCA ELENA
11	Infirmiera		G	1 BOB LIVIA
12	Infirmiera		G	1 MOGA VIOLETA-MARGARETA
13	Infirmiera		G	1 vacant
14	Infirmiera		G	1 vacant

LABORATOR RECUPERARE, MEDICINA FIZICA SI BALNEOLOGIE - 26 POSTURI

1	Medic primar-sef laborator del.		II	S	1	BUCSA BENIAMIN
2	Kinetoterapeut			S	1	BUCULESCU ALIN
3	Kinetoterapeut			S	1	GURA CRISTIAN
4	Kinetoterapeut			S	1	IGNA FLORINA NICOLETA
5	Kinetoterapeut			S	1	MARCUS DANIEL
6	Kinetoterapeut			S	1	OLARIU DUDAS DIANA IONELA
7	Kinetoterapeut			S	1	ZOICA CRISTINA MARIA
8	Asistent medical-sef		principal	PL	1	BOCIT GHEORGHE
9	Asistent medical		principal	PL	1	BLANARU CARMELA
10	Asistent medical		principal	PL	1	COSTEA VOICHITA
11	Asistent medical		principal	PL	1	MUSTE CARMEN
12	Asistent medical		principal	PL	1	STOICA GABRIELA
13	Asistent medical		principal	PL	1	VAJDA MIHAELA MEDINA
14	Asistent medical		principal	PL	1	WEBER MARCELA LUCIA
15	Oficiant medical			M	1	DASCALITA PETRE
16	Asistent medical		principal	PL	1	vacant
17	Asistent medical		principal	PL	1	vacant
18	Asistent medical		principal	PL	1	vacant
19	Asistent medical		principal	PL	1	vacant
20	Baies			G	1	GASPAR LUCIA
21	Baies			G	1	MARICA SORINA
22	Baies			G	1	MATEI MARIANA
23	Baies			G	1	MUSTEA NELA FELICIA
24	Baies			G	1	PUTAN ANA
25	Ingrjitoare			G	1	vacant
26	Ingrjitoare			G	1	vacant

SECTIA PNEUMOLOGIE - 39 POSTURI

Patuti: 70; din care: Sectie 50; Compartiment T.B.C. 8

1	Medic primar-sef sectie		II	S	1	NEAGU MARIA ELENA
2	Medic primar			S	1	BULUGEAN LUCIA
3	Medic primar			S	1	DODA CAMELIA
4	Medic primar			S	1	PETRU IOAN DORIN
5	Medic primar			S	1	PISEL NICOLAE ALEXANDRU
6	Medic specialist			S	1	BUDARESCU MARIA CRISTINA
7	Medic primar			S	1	vacant
8	Medic specialist			S	1	vacant
9	Asistent medical-sef		principal	PL	1	URECHE BIANCA IOSEFINA
10	Asistent medical		principal	PL	1	CURETEU IRINA ANISOARA
11	Asistent medical		principal	PL	1	IOVAN FELICIA AURELIA

12		Asistent medical	principal	PL	1 JUDE LIANA GABRIELA
13		Asistent medical	principal	PL	1 JURJ RODICA
14		Asistent medical	principal	S	1 PALALAU AURORA GRATIELA
15		Asistent medical	principal	PL	1 PANDREA DANIELA FLOARE
16		Asistent medical	principal	PL	1 PARAU ELENA
17		Asistent medical	principal	PL	1 TODERAN ANETA
18		Asistent medical	principal	PL	1 VASS FLORINELA
19		Asistent medical	principal	PL	1 FILIMON DORINA ELENA
20		Statistician medical	principal	M	1 ACHIM VICTORITA
21		Asistent medical	principal	PL	1 vacant
22		Asistent medical	principal	PL	1 vacant
23		Asistent medical	principal	PL	1 vacant
24		Asistent medical	principal	PL	1 vacant
25		Asistent medical	principal	S	1 vacant
26		Asistent medical		PL	1 vacant
27		Asistent medical		PL	1 vacant
28		Asistent medical		PL	1 vacant
29		Infirmiera		G	1 FLIJERAS NICULINA
30		Infirmiera		G	1 GROZA LUCIA
31		Infirmiera		G	1 MUNTEANU FLORICA
32		Infirmiera		G	1 NEAG RODICA
33		Infirmiera		G	1 NICULA MARIA DORINA
34		Infirmiera		G	1 OLAR LAURA
35		Infirmiera		G	1 RACILA ELENA
36		Infirmiera		G	1 GABAR ANA
37		Infirmiera		G	1 vacant
38		Ingrijitoare		G	1 vacant
39		Ingrijitoare		G	1 vacant

CENTRUL DE HEMODIALIZA - 26 POSTURI

Aparate: 9

1	Medic primar-sef sectie		I	S	1 PALAMAR MARCEL
2	Medic specialist			S	1 GREG MARIUS DORIN
3	Inginer		I	S	1 COJOCARU HORIA
4	Psiholog specialist			S	1 BURLACU ANA MARIA
5	Tehnician		principal	M	1 CIAPOS SILVIU ADRIAN
6	Inginer		I	S	1 vacant
7	Asistent medical-sef		principal	PL	1 FAUR MIRELA VALENTINA
8	Asistent medical		principal	PL	1 AVRAM DANA DUMITRA
9	Asistent medical		principal	PL	1 CHERECHES HAINAL
10	Asistent medical		principal	PL	1 CIRES MONICA
11	Asistent medical		principal	PL	1 PELLE LIDIA
12	Asistent medical		principal	PL	1 SILASI CRISTINA

13		Asistent medical	principal	PL	1	STOICA GABRIELA
14		Asistent medical	principal	S	1	URSALES ELENA RAMONA
15		Statistician medical		M	1	BARNA ANDEEA
16		Asistent medical		PL	1	vacant
17		Asistent medical		PL	1	vacant
18		Asistent medical		PL	1	vacant
19		Asistent medical		PL	1	vacant
20		Asistent medical		PL	1	vacant
21		Infirmiera		G	1	BERA CRISTINA CORNELIA
22		Infirmiera		G	1	PETROVICI ANGELICA LUCIA
23		Infirmiera		G	1	SCUIPICI ANTOANELA
24		Infirmiera		G	1	SINA DANIELA
25		Infirmiera		G	1	ZGARDEA ELENA
26		Ingrjiitoare		G	1	vacant

FARMACIA SPITAL - 24 POSTURI

1	Farmacist primar-farmacist sef		II	S	1	AVRAM SIMONA
2	Farmacist primar			S	1	ALMASAN SMARANDA
3	Farmacist primar			S	1	vacant
4	Farmacist primar			S	1	vacant
5	Asistent medical		principal	PL	1	CRISAN LACRIMIOARA MINERVA
6	Asistent medical		principal	PL	1	FEIER LARISA
7	Asistent medical		principal	PL	1	FERA MARIOARA
8	Asistent medical		principal	PL	1	LAVU VIORICA
9	Asistent medical		principal	PL	1	MAGDA ANA MONICA
10	Asistent medical		principal	PL	1	PETRUT SIMONA
11	Asistent medical		principal	PL	1	PITULICE MIRELA
12	Asistent medical		principal	PL	1	TODERICIU DANIELA
13	Asistent medical		principal	PL	1	ZIRNEA EMILIA
14	Operator, controlor date		I	M	1	JULA FLORICA
15	Operator, controlor date		I	M	1	LAZAR FLORICA I.
16	Operator, controlor date		I	M	1	SAMI MARIA
17	Asistent medical		principal	PL	1	vacant
18	Asistent medical		principal	PL	1	vacant
19	Asistent medical		principal	PL	1	vacant
20	Asistent medical			PL	1	vacant
21	Asistent medical			PL	1	vacant
22	Asistent medical			SSD	1	vacant
23	Ingrjiitoare			G	1	ILIES MARIA
24	Ingrjiitoare			G	1	POPA FLORICA

LABORATOR DE ANALIZE MEDICALE - 35 POSTURI

1	Medic primar-sef laborator		II	S	1	STOIAN MARIA MIHAELA
2		Medic primar		S	1	SOCACIU CARMEN VIOLETA
3		Medic primar		S	1	VINTILA LETITIA
4		Medic specialist		S	1	CUSNIRIUC MARIA
5		Medic specialist		S	1	vacant
6		Biochemist specialist		S	1	CIORNEA SIMONA
7		Chimist principal		S	1	vacant
8		Biolog principal		S	1	BOANTA CORINA
9		Biolog principal		S	1	TOMA MIHAELA
10		Farmacist specialist		S	1	POPA ANCA
11		Biochemist principal		S	1	PISOIU IACOB LILIANA
12		Asistent medical-sef	principal	PL	1	MESLOSAN SIMINA MARIA
13		Asistent medical	principal	PL	1	BOLDOR LIANA ANGELICA
14		Asistent medical	principal	PL	1	FARCAS MIHAELA TAMARA
15		Asistent medical	principal	PL	1	FURTUNA DORINA
16		Asistent medical	principal	PL	1	GHIJURA DANIELA MARIANA
17		Asistent medical	principal	PL	1	GOLEA GHEORGHITA
18		Asistent medical	principal	PL	1	JULA ADINA FELICIA
19		Asistent medical	principal	S	1	MOISA EUGENIA-CARMEN
20		Asistent medical	principal	PL	1	MOISE ELENA
21		Asistent medical	principal	PL	1	POP AURELIA
22		Asistent medical	principal	PL	1	RATA NICULINA
23		Asistent medical	principal	PL	1	SERBESC ELENA
24		Asistent medical	principal	PL	1	SILAGHI GANEA GABRIELA
25		Asistent medical		PL	1	ANCA IULIANA MARIA VERONICA
26		Asistent medical		PL	1	FURTUNA OTILIA MIHAELA
27		Asistent medical		PL	1	GRIGORE ALINA CONSTANTINA
28		Statistician medical		M	1	COPACI MARIANA
29		Ingrijitoare		G	1	PANTA MARIA
30		Ingrijitoare		G	1	SEREA LILIANA
31		Ingrijitoare		G	1	vacant
PUNCT DE LUCRU TBC - 4 POSTURI						
32		Medic primar		S	1	vacant
33		Asistent medical	principal	PL	1	FAUR DELIA
34		Asistent medical	principal	PL	1	SUTEU DORINA MARIANA
35		Ingrijitoare		G	1	MIEILA MIRELA MARIANA

LABORATOR RADIOLOGIE SI IMAGISTICA MEDICALA - 41 POSTURI

1	Medic primar-sef laborator del.	II	S	1	MUNTEAN MINAI RODICA MARIANA
2	Medic primar		S	1	FLOREA DAN CALIN
3	Medic primar		S	1	VERES IOAN LUDOVIC
4	Medic primar		S	1	vacant temporar
5	Medic specialist		S	1	PAVEL RADU C
6	Medic primar		S	1	vacant
7	Medic primar		S	1	vacant
8	Medic primar		S	1	vacant
9	Fizician medical		S	1	vacant
10	Asistent medical-sef	principal	PL	1	NELEGA GABRIELA LOREDANA
11	Asistent medical	principal	PL	1	BADEA V.ADRIANA
12	Asistent medical	principal	PL	1	BANCHES IOANA DANIELA
13	Asistent medical	principal	PL	1	CALEAN MIHAELA
14	Asistent medical	principal	PL	1	COSTACHE GABRIELA
15	Asistent medical	principal	PL	1	DOMINTE MARINA SVETLANA
16	Asistent medical	principal	PL	1	MATIES MARINELA
17	Asistent medical	principal	PL	1	PETRUT MARIA
18	Asistent medical	principal	PL	1	SANDU CLAUDIA FLORINA
19	Asistent medical	principal	PL	1	SMEU NICOLAE DORIN
20	Asistent medical	principal	PL	1	STANCIU BIANCA VANINA
21	Asistent medical		PL	1	FRUNZA LOREDANA PAULA
22	Asistent medical		PL	1	HANDRACHI-STEF LUCIAN
23	Asistent medical		PL	1	HOTEA CALIN
24	Asistent medical		M	1	KAST MIHAELA
25	Asistent medical		PL	1	NAN ELENA NICOLETA
26	Asistent medical		PL	1	PARDOS MARIOARA DORINA
27	Asistent medical		PL	1	STAN MIHAELA CRISTINA
28	Asistent medical		PL	1	RAHOVEAN EMILIA VIORICA
29	Asistent medical	principal	PL	1	vacant
30	Asistent medical	principal	PL	1	vacant
31	Asistent medical	principal	PL	1	vacant
32	Asistent medical	principal	PL	1	vacant
33	Asistent medical		PL	1	vacant
34	Asistent medical		PL	1	vacant
35	Registrator medical	principal	M	1	CSIKI ELENA
36	Registrator medical	principal	M	1	FARCAS CLAUDIA CORNELIA
37	Registrator medical		M	1	SELAR IOAN DANIEL
38	Registrator medical	debutant	M	1	MUNTEAN-MINAI SMARANDA
39	Ingrjitoare		G	1	IOVAN FLORICA
40	Ingrjitoare		G	1	NICOARA-STOICA AURELIA RODICA
41	Ingrjitoare		G	1	vacant

LABORATOR MEDICINA NUCLEARA - 9 POSTURI

1	Medic specialist-sef lab.del.		I	S	1	MUTIU FLORIN
2	Chimist specialist			S	1	STOICESCU TATIANA
3	Fizician medical			S	1	PODELEAN CARMEN RAMONA
4	Asistent medical-sef		principal	PL	1	INVERSin RODICA
5	Asistent medical		principal	PL	1	ILIE NICOLETA MARIANA
6	Asistent medical		principal	PL	1	OANCEA DANIELA
7	Asistent medical		principal	PL	1	ONCOS VALERIA LEONTINA
8	Asistent medical			PL	1	vacant
9	Ingrjiitoare			G	1	IANC DORINA

SERVICIUL DE ANATOMIE PATOLOGICA - 12 POSTURI

1	Medic specialist-sef serviciu		I	S	1	vacant
2	Medic primar			S	1	BOTESCU ADRIAN GABRIEL
3	Biolog principal			S	1	vacant
4	Asistent medical		principal	PL	1	ADAM MARILENA COSMINA
5	Asistent medical		principal	PL	1	BERBECEANU MONICA LUCIANA
6	Asistent medical		principal	PL	1	JELER DANIELA
7	Asistent medical		principal	PL	1	LAZA MARIA MONICA
8	Asistent medical			PL	1	BOTESCU ELISABETA
9	Autopsier			M	1	ADAM REMUS NICOLAE
10	Autopsier			M	1	INUTU DORU
11	Registrator medical			M	1	MATEI DANIELA
12	Ingrjiitoare			G	1	NOVAC VIORICA

CABINET ONCOLOGIE MEDICALA - 5 POSTURI

1	Medic primar			S	1	vacant temporar
2	Medic specialist			S	1	vacant
3	Asistent medical			PL	1	GALEA DOINA CRINA
4	Asistent medical			PL	1	CHIRIAC ANNEMARIE LUCIA
5	Statistician medical		principal	M	1	DANCIU CARMEN ELENA

CABINET DIABET ZAHARAT, BOLI DE NUTRIIE SI METABOLISM - 5.5 POSTURI

1	Medic primar			S	1	FOTESCU NICOLETA CODRUTA
2	Medic specialist			S	1	DOMNITEANU GAROFITA
3	Medic primar			S	0.5	vacant
4	Asistent medical		principal	PL	1	FECHETE MARIANA
5	Asistent medical		principal	PL	1	GRUJA ELISABETA
6	Asistent medical		principal	PL	1	TORNEA EUGENIA

UNITATEA DE PRIMIRE URGENTE UPU-SMURD cu punct de lucru in loc.DEVA,ILIA,CALAN si Cab.medicina dentara urgenta - 77 POSTURI

1	Medic primar-sef sectie		II	S	1	POPA TANASE
2	Medic primar			S	1	DUTULESCU LIONEL CIPRIAN
3	Medic primar			S	1	MOGA LUCIA
4	Medic primar			S	1	NICOLA NADINA
5	Medic primar			S	1	STOICA ELENA ANCA
6	Medic primar			S	1	VETEAN MUNTEAN MIRCEA
7	Medic specialist			S	1	GHERMAN MIHAELA LAURA
8	Medic specialist			S	1	LAZAR IONELA
9	Medic specialist			S	1	MIHAESCU MARIA CORINA
10	Medic primar			S	1	vacant ~
11	Medic specialist			S	1	vacant
12	Medic specialist			S	1	vacant
13	Medic specialist			S	1	vacant
14	Medic specialist			S	1	vacant
15	Asistent social		principal	S	1	PAVEL ADINA-FLORINA
16	Asistent medical-sef		principal	S	1	POP VASILICA
17	Asistent medical		principal	S	1	ADESPEI LILIANA
18	Asistent medical		principal	PL	1	BUDA MIRELA
19	Asistent medical		principal	PL	1	CEAPA IOANA CRISTINA
20	Asistent medical		principal	PL	1	CRISAN LOREDANA SANDA
21	Asistent medical		principal	PL	1	CURE LAURA MIRELA
22	Asistent medical		principal	PL	1	DIOANE NICULINA MARIA
23	Asistent medical		principal	M	1	DRAICA ILEANA
24	Asistent medical		principal	PL	1	DROBOT VIVIANA
25	Asistent medical		principal	PL	1	GHERMAN VALI-MIHAELA
26	Asistent medical		principal	PL	1	GREBENISAN CRISTINA
27	Asistent medical		principal	PL	1	LACZKO-LOGOJAN MIHAELA
28	Asistent medical		principal	PL	1	LOGOJAN DORIN
29	Asistent medical		principal	PL	1	MANOLESCU ELENA ALINA
30	Asistent medical		principal	PL	1	MARGINEAN COSMINA ELENA
31	Asistent medical		principal	PL	1	NAGY LUMINITA SORINA
32	Asistent medical		principal	PL	1	NEAGU EUGENIA
33	Asistent medical		principal	PL	1	OPROIU ALINA MIHAELA
34	Asistent medical		principal	PL	1	PENA CECILIA CERASELA
35	Asistent medical		principal	PL	1	PETREAN FLORINELA LACRAMIOARA
36	Asistent medical		principal	S	1	PIPOS MIHAELA VIORICA
37	Asistent medical		principal	S	1	PREDA ADINA EMANUELA
38	Asistent medical		principal	PL	1	RUSU COSMINA LAURA
39	Asistent medical		principal	PL	1	VARADI CLAUDIA LILIANA

40			Asistent medical		principal	PL	1	ZDETOVETCHI DAN CRISTIAN
41			Asistent medical			PL	1	BARBURA ELENA-CRISTINA
42			Asistent medical			PL	1	CRACIUN ANAMARIA
43			Asistent medical			PL	1	DITA DANIELA
44			Asistent medical			PL	1	GRAMA CAMELIA LACRAMIOARA
45			Asistent medical			PL	1	SELAR ADRIAN
46			Sora medicala		principal	M	1	URS IOANA
47			Asistent medical		principal	PL	1	UNGUR RAMONA LIVIA
48			Asistent medical		principal	PL	1	vacant
49			Asistent medical			PL	1	vacant
50			Asistent medical			PL	1	vacant
51			Operator, controlor date		I	M	1	BUREANA ANA MARIA
52			Operator, controlor date		I	M	1	NICHITELEA MARINELA
53			Operator, controlor date		I	M	1	TRIF LOREDANA IRINA
54			Operator, controlor date		II	M	1	VINTILA ALINA
55			Operator, controlor date		II	M	1	MUNTEAN ANCA MARIA
56			Infirmiera			G	1	BORCA SALOMIA
57			Infirmiera			G	1	CIORPAC MARIA
58			Infirmiera			G	1	DANC DANIELA
59			Infirmiera			G	1	IDITA CORNELIA
60			Infirmiera			G	1	IGRET MONICA LILIOARA
61			Infirmiera			G	1	PETRICA IULIANA CARMEN
62			Brancardier			G	1	ABRUDEAN MIHAI DORIN
63			Brancardier			G	1	COTOI IOAN
64			Brancardier			G	1	FAUR LUCIAN MARIN
65			Brancardier			G	1	GLIGOR CONSTANTIN
66			Brancardier			G	1	MOGA NICOLAE
67			Brancardier			G	1	MOLDOVAN MILIONOR OVIDIU
68			Brancardier			G	1	MUNTEAN RAUL COSMIN
69			Brancardier			G	1	RATA GHEORGHITA
70			Brancardier			G	1	TRIFOI DUMITRU VALENTIN
71			Ingrjiitoare			G	1	ALB SINZIANA
72			Ingrjiitoare			G	1	BALAJ ELISABETA
73			Ingrjiitoare			G	1	DANESCU ADRIANA
74			Ingrjiitoare			G	1	PEICA MONICA ELENA
75			Ingrjiitoare			G	1	STIOPA LIGIA DACIANA
76			Infirmiera			G	1	vacant
77			Brancardier			G	1	vacant

UPU SMURD ILIA - 13 POSTURI

1	Medic specialist		S	1	DAN MONICA SONIA
2	Medic specialist		S	1	PERJU CATALIN CONSTANTIN
3	Medic		S	1	BUGNAR GABRIELA MONICA
4	Asistent medical	principal	PL	1	HAN MIHAELA
5	Asistent medical	principal	PL	1	HANAS LILIANA
6	Asistent medical	principal	PL	1	ORBONAS ILDIKO
7	Asistent medical	principal	PL	1	SARARU GABRIELA DELIA
8	Sora medicala	principal	M	1	BOGDANEL MARIA
9	Sora medicala	principal	M	1	CACEU ANGELICA
10	Ingrjiitoare		G	1	BOCIOACA EUGENIA
11	Ingrjiitoare		G	1	BORDEA MARIA
12	Ingrjiitoare		G	1	JOSAN DOMNICA
13	Ingrjiitoare		G	1	LUCA ANA LENUTA

UPU SMURD CALAN - 11 POSTURI

1	Medic specialist		S	1	vacant
2	Medic specialist		S	1	vacant
3	Asistent medical		PL	1	vacant
4	Asistent medical		PL	1	vacant
5	Asistent medical		PL	1	vacant
6	Asistent medical		PL	1	vacant
7	Asistent medical		PL	1	vacant
8	Ingrjiitoare		G	1	vacant
9	Ingrjiitoare		G	1	vacant
10	Ingrjiitoare		G	1	vacant
11	Ingrjiitoare		G	1	vacant

CABINET MEDICINA DENTARA URGENTA - 9 POSTURI

1	Medic		S	1	VANCU NICOLAE NONU
2	Medic		S	1	IDITA IOANA ALEXANDRA
3	Medic		S	1	vacant
4	Medic specialist		S	1	vacant
5	Asistent medical	principal	PL	1	OLARIU DOINA
6	Asistent medical	principal	PL	1	PINTICAN RAMONA
7	Asistent medical	principal	PL	1	vacant
8	Asistent medical		PL	1	vacant
9	Asistent medical		PL	1	vacant

CABINET BOLI INFECTIOASE - 2 POSTURI

1	Medic primar		S	1	CAMPEANU ELENA
2	Asistent medical	principal	PL	1	MEITA NADIA

CABINET PLANIFICARE FAMILIALA - 6 POSTURI

1		Medic primar		S	1 vacant
2		Medic specialist		S	1 MOCA ILEANA VIORICA
3		Medic specialist		S	1 STEFAN LENUTA
4		Asistent medical	principal	S	1 VLADAN NICOLETA ELVIRA
5		Asistent medical		PL	1 vacant
6		Ingrijitoare		G	1 vacant

DISPENSAR TBC DEVA - 6 POSTURI

1		Medic primar		S	1 SILVESTRU MARIA
2		Asistent medical	principal	PL	1 FOLEA LILIANA
3		Asistent medical	principal	PL	1 TIRBAN VIOLETA
4		Asistent medical	principal	PL	1 vacant
5		Asistent medical		PL	1 vacant
6		Statistician medical		M	1 SUTEU RAMONA-DIANA

SERVICIUL JUDETETAN DE MEDICINA LEGALA - 26 POSTURI

1		Medic primar-sef serviciu		II	1 MARCULESCU DAN OCTAVIAN
2		Medic primar		S	1 FOLEA OVIDIU
3		Medic primar		S	1 OIEGAR CLAUDIU
4		Medic primar		S	1 TOZLOVANU DOREL
5		Medic specialist		S	1 CHIROBAN OVIDIU SORIN
6		Medic primar		S	1 vacant
7		Chimist principal		S	1 DEACONU SIMONA AMADA
8		Farmacist primar		S	1 CURETEAN FLORENTINA
9		Farmacist primar		S	1 TRUFAS SIMONA ELENA
10		Inginer	IA	S	1 CINDA MARIANA
11		Referent	II	S	1 CALINESCU MARIA CARMEN
12		Referent	I	S	1 vacant
13		Asistent medical	principal	PL	1 ARESAN SIMONA
14		Asistent medical	principal	PL	1 BORZA MARIOARA
15		Asistent medical	principal	PL	1 BORZA VIRGIL
16		Asistent medical	principal	PL	1 ILCA LUCI
17		Asistent medical	principal	PL	1 IONESCU CRISTIAN
18		Asistent medical	principal	PL	1 IONESCU DANIELA
19		Asistent medical	principal	PL	1 LEONTESCU BALU MIRCEA
20		Autopsier		M	1 LEONTESCU DAVID GABRIEL
21		Autopsier principal	principal	M	1 CALFA CICERONE
22		Registrator medical	principal	M	1 BALOG ELVIRA
23		Registrator medical	principal	M	1 RUS DANA
24		Statistician medical	principal	M	1 MARCULESCU DOINA
25		Ingrijitoare		G	1 CHIRILA ANDREEA STEFANIA
26		Brancardier		G	1 DEMENY IOSIF

CENTRUL DE SANATATE MINTALA ADULTI - 12 POSTURI

Patuti zi: 50; Stationar de zi psihiatrice 50;

1	Medic primar-sef laborator	I	S	1	1	CETEAN DANIELA
2	Medic specialist		S	1	1	BEJAN ANDREEA
3	Psiholog principal		S	1	1	BOTA FLORINA ARABELA
4	Psiholog practicant		S	1	1	vacant
5	Asistent medical-sef	principal	PL	1	1	ANGHELUTA ELEONORA MIRELA
6	Asistent medical	principal	PL	1	1	CHIREA DIANA
7	Asistent medical	principal	PL	1	1	KORB CARMEN GEORGETA
8	Asistent medical	principal	PL	1	1	TUDOSE NICOLINA
9	Statistician medical		M	1	1	LEICA MIHAELA CORNELIA
10	Asistent medical		PL	1	1	vacant
11	Instructor de educatie	principal	M	1	1	vacant
12	Ingrijitoare		G	1	1	RUCAREANU FLORICA

CENTRUL DE SANATATE MINTALA COPII - 18 POSTURI

Patuti zi: 30; Stationar de zi neuropsihiatrie infantila 30;

1	Medic specialist-sef centru	II	S	1	1	vacant
2	Medic primar		S	1	1	vacant
3	Medic specialist		S	1	1	BUTA RODICA AURORA
4	Asistent social	principal	S	1	1	BEANGA CARMEN MARIA
5	Logoped principal		S	1	1	COADA MELINDA ROZALIA
6	Kinetoterapeut		S	1	1	IONICA GEORGIANA
7	Psiholog principal		S	1	1	ENE GABRIELA MONICA
8	Psiholog principal		S	1	1	GRAUR IULIA IOANA
9	Asistent medical-sef	principal	S	1	1	TOTH MARILENA
10	Asistent medical	principal	PL	1	1	OPREA TIMEA
11	Asistent medical	principal	PL	1	1	PITU CORINA ALINA
12	Asistent medical	principal	PL	1	1	vacant
13	Instructor de educatie		M	1	1	REIS CRISTINA
14	Instructor de educatie		M	1	1	TODEA OANA ELISABETA
15	Statistician medical	principal	M	1	1	TUDOSIE ANDY GABRIEL
16	Infirmiera		G	1	1	ORLEA DORINA
17	Ingrijitoare		G	1	1	vacant
18	Ingrijitoare		G	1	1	vacant

AMBULATORIUL INTEGRAT - CABINET ALERGOLOGIE - 2 POSTURI

1	Medic primar		S	1	1	IGHERGAN ALEXANDRINA
2	Asistent medical		PL	1	1	OTOIU CARMEN-SILVIA

CABINET DERMATOLOGIE PEDIATRICA - 2 POSTURI

1	Medic primar		S	1	1	MAGHERU MIHAELA
2	Asistent medical	principal	PL	1	1	JUDUC CRISTINA

CABINET MEDICINA MUNCII - 1 POST

1	Medic primar	S	1	vacant
---	--------------	---	---	--------

CABINET AUDIOLOGIE - 1 POST

1	Asistent medical	principal	PL	1	vacant
---	------------------	-----------	----	---	--------

CABINET NEUROLOGIE - 1 POST

1	Asistent medical	principal	PL	1	CAZAN CAMELIA
---	------------------	-----------	----	---	---------------

LABORATOR EXPLORARI FUNCTIONALE PNEUMOLOGIE - 1 POST

1	Asistent medical	principal	PL	1	PETRUJ MARIANA
---	------------------	-----------	----	---	----------------

AMBULATORIUL DE SPECIALITATE PENTRU SPORTIVI - CABINET MEDICINA SPORTIVA - 3 POSTURI

1	Medic specialist	S	1	vacant	
2	Asistent medical	principal	PL	1	vacant
3	Asistent medical	principal	PL	1	vacant

CABINET MEDICINA SPORTIVA -LOT OLIMPIC DE GIMNASTICA SI GRUP SCOLAR SPORTIV - 5 POSTURI

1	Medic specialist	S	1	OLTEAN SANDA	
2	Asistent medical	principal	PL	1	BLAGA ELENA GIULIANA
3	Asistent medical	principal	PL	1	STANESCU LAVINIA
4	Asistent medical	principal	PL	1	VINEREAN ADRIANA
5	Asistent medical	principal	M	1	vacant

CABINET RECUPERARE MEDICINA FIZICA SI BALNEOLOGIE-LOT OLIMPIC DE GIMNASTICA SI GRUP SCOLAR SPORTIV - 1 POST

1	Asistent medical	principal	PL	1	GERGELY ENIKO
---	------------------	-----------	----	---	---------------

CABINET PSIHOLOGIC LOT OLIMPIC SI GRUP SCOLAR SPORTIV - 1 POST

1	Psiholog practicant	S	1	vacant
---	---------------------	---	---	--------

CABINET STOMATOLOGIC LOT OLIMPIC SI GRUP SCOLAR SPORTIV - 1POST

1	Medic	S	1	SORCA BOGDAN
---	-------	---	---	--------------

MEDICI REZIDENTI - 30 POSTURI

1	Medic rezident an I	S	1	BLAJ PATRICIA
2	Medic rezident an I	S	1	SACEANU OANA MARIA
3	Medic rezident an I	S	1	MARIAN ANAMARIA ADRIANA
4	Medic rezident an I	S	1	GHERASIM IOAN TUDOR
5	Medic rezident an I	S	1	POP DENISA MARIA
6	Medic rezident an I	S	1	SOOS ELENA ANDRA
7	Medic rezident an II	S	1	COLTA ANA MARIA
8	Medic rezident an II	S	1	IORDACHE LORENA
9	Medic rezident an III	S	1	ANGHELESCU COPTIL ANDREEA
10	Medic rezident an III	S	1	BENTEU DARIUS

11		Medic rezident an III		S	1	BENTEU DIANA
12		Medic rezident an III		S	1	BETEVA RAZVAN OLIVIAN
13		Medic rezident an III		S	1	ZAHARIA ANAMARIA
14		Medic rezident an III		S	1	GEORGESCU GEORGE VALENTIN
15		Medic rezident an III		S	1	HOLHOS TALIDA IOANA
16		Medic rezident an III		S	1	MESTEREAGA GEORGE PETRISOR
17		Medic rezident an III		S	1	MUNTEAN MIHAELA LIVIA
18		Medic rezident an III		S	1	PETCA ELVIS SAMUEL
19		Medic rezident an III		S	1	SALEH AHMED
20		Medic rezident an III		S	1	BIGLIGIU TEODORA ADRIANA
21		Medic rezident an III		S	1	CRISAN MONICA
22		Medic rezident an IV		S	1	ARDELEANU ANDREEA GIORGIANA
23		Medic rezident an IV		S	1	CANDEA ANDREEA MARIA
24		Medic rezident an IV		S	1	VACARIU ANDREI ALEXANDRU
25		Medic rezident an IV		S	1	IACOB TUDOR CRISTIAN
26		Medic rezident an IV		S	1	vacant
27		Medic rezident an V		S	1	BUNEA ANGHEL LUCIAN
28		Medic rezident an V		S	1	IFTIMIE VICTOR
29		Medic rezident an V		S	1	MIHUT CARLA EMANUELA
30		Medic rezident an V		S	1	vacant

PROGRAM NATIONAL 3 - 1 POST

1		Economist	II	S	1	vacant
---	--	-----------	----	---	---	--------

SUBPROGRAM PN 6 DIABET - 1 POST

1		Operator, controlor date	I	M	1	vacant
---	--	--------------------------	---	---	---	--------

SUBPROGRAM HIV SIDA - 2 POSTURI

1		Asistent medical	principal	PL	1	MOISE ALINA MARIA
2		Asistent medical	principal	PL	1	PETRASCU MIHAELA MARIANA

CENTRUL DE SANATATE MULTIFUNCTIONAL CALAN - 7 POSTURI

1		Medic primar		S	1	BRANESCU NICOLAE GAVRIL
2		Medic specialist		S	1	SAHIU CARMEN MAGDA
3		Kinetoterapeut		S	1	vacant
4		Asistent medical	principal	PL	1	BARBU LIANA GIANINA
5		Asistent medical	principal	PL	1	LASCOIU AURICA
6		Ingrijitoare		G	1	MOLDOVEANU SALVINA
7		Ingrijitoare		G	1	NOVAC ALEXANDRA

SERVICIUL DE PREVENIRE SI CONTROL AL INFECTIILOR NOZOCOMIALE - 8.5 POSTURI

1	Medic specialist-sef serviciu del.	I	S	1	BARABAS EDITH
2	Medic specialist		S	0.5	LEUCA CREMENASIU DIANA
3	Medic specialist		S	0.5	vacant
4	Farmacist primar		S	0.5	vacant
5	Asistent medical	principal	PL	1	BUBOIU SORIN PETRU
6	Asistent medical	principal	PL	1	GOIA RODICA LOREDANA
7	Asistent medical	principal	PL	1	VRACIU NICOLAE
8	Asistent medical		PL	1	VRACIU NICOLAE ANDREI
9	Agent D.D.D.		G	1	BEJGANEANU COSTEL
10	Agent D.D.D.		G	1	CSISZER PETRU ZSOLT

COMPARTIMENT STERILIZARE - 12 POSTURI

1	Asistent medical-sef	principal	PL	1	LUPSAN FLORICA
2	Asistent medical	principal	PL	1	NELEGA ANGELA ELISABETA
3	Asistent medical	principal	PL	1	POPESC LILIANA
4	Asistent medical	principal	PL	1	PUTUCA BIANCA
5	Asistent medical	principal	PL	1	SALA LAVINIA
6	Asistent medical	principal	PL	1	SIMON CAMELIA SANDA
7	Asistent medical	principal	PL	1	TOMA CORINA
8	Asistent medical	principal	PL	1	URZICEANU SANDA
9	Asistent medical		PL	1	TUDOR PETRUTA CORINA
10	Asistent medical		PL	1	vacant
11	Ingrijitoare		G	1	STEGA RODICA
12	Ingrijitoare		G	1	vacant

COMPARTIMENT DIETETICA - 2 POSTURI

1	Asistent medical	principal	PL	1	ALBU ECATERINA DANIELA
2	Asistent medical	principal	S	1	NICOARA LIVIA MARIA

CABINET ASISTENTA SOCIALA - 1 POST

1	Sociolog		S	1	BUCERZAN ANDREEA MARIANA
---	----------	--	---	---	--------------------------

STATIE DE STERILIZARE DESEURI MEDICALE - 1 POST

1	Muncitor calif. (electromecanic)	I		1	CIRES DORIN SORIN
---	----------------------------------	---	--	---	-------------------

COMPARTIMENT INTERNARI-EXTERNARI - 7 POSTURI

1	Muncitor calificat (garderobier)	IV	1	BEIAN MARIANA
2	Muncitor calificat (garderobier)	IV	1	JAKAB EDITH
3	Registrator medical	principal	1	BAIDAN MIRELA
4	Registrator medical	principal	1	FILIMON ADRIANA
5	Registrator medical	principal	1	IOVAN MARIA RODICA
6	Registrator medical	M	1	vacant
7	Ingrijitoare	G	1	vacant

SERVICIUL FINANCIAR CONTABILITATE - 9 POSTURI

1	Sef serviciu	II	1	MOLDOVAN CECILIA
2	Economist	I	1	CIORA MARIA
3	Economist	I	1	POPA RAMONA ELENA
4	Economist	IA	1	DOBREI IOANA DIANA DOMENIQUE
5	Economist	IA	1	TOMA CLAUDIA TEODORA
6	Economist	IA	1	vacant
7	Casier	M	1	FILIP ANGELICA
8	Contabil	IA	1	PIRVA LIDIA
9	Contabil	IA	1	SUBA ELENA

BIROU ACHIZITII - 6 POSTURI

1	Sef birou deleg.	II	1	NEGREA MIHAELA LILIANA
2	Economist	IA	1	PALKO MELINDA IULIA
3	Economist	IA	1	VLASIN AIDA NICOLETA
4	Economist	II	1	OLTEAN ARTIMIZA
5	Referent	II	1	FODOR IOANA
6	Economist	IA	1	vacant temporar

BIROU DE MANAGEMENT AL CALITATII - 6 POSTURI

1	Sef birou deleg.	II	1	TIF MIHAELA
2	Medic specialist	S	1	ROMOSAN OANA GEORGIANA
3	Consilier juridic	II	1	COTARLEA ADRIAN
4	Economist	I	1	vacant temporar
5	Economist	IA	1	vacant
6	Referent de specialitate	III	1	NEAGU STEFANIA VERONICA

COMPARTIMENT JURIDIC - 2 POSTURI

1	Consilier juridic	IA	1	BARTAN IULIA
2	Consilier juridic	IA	1	BERCEANU GABRIEL

COMPARTIMENT AUDIT PUBLIC INTERN - 2 POSTURI

1	Economist	IA	1	CARMAZAN VERGINICA AMALIA
2	Economist	IA	1	POPA COSMIN OVIDIU

COMPARTIMENT RELATII CU PUBLICUL -2 POSTURI

1	Consilier	II	S	1	RUNCAN LUMINITA TEODORA
2	Economist	IA	S	1	vacant

COMPARTIMENT INTERN DE PREVENIRE SI PROTECTIE - 1.5 POSTURI

1	Inginer	IA	S	1	IACOBESCU MARIUS
2	Subinginer	I	SSD	0.5	ROMOSAN ADRIANA

COMPARTIMENT TEHNIC - 1.5 POST

1	Subinginer	I	SSD	0.5	ROMOSAN ADRIANA
2	Inginer	I	S	1	vacant

SERVICIUL RUNOS - 8 POSTURI

1	Sef serviciu	II	S	1	SIRBU NICODINA MARIANA
2	Economist	IA	S	1	MUTIU LIZETA LIA
3	Inginer	IA	S	1	IORDACHE ADRIANA DANA
4	Inginer	IA	S	1	PARVA NELI GABRIELA
5	Inginer	IA	S	1	ZSOK DANIELA GEORGETA
6	Referent de specialitate	I	S	1	BOTA LILIANA VIOLETA
7	Referent	IA	M	1	PETRICA ELEONORA CRISTINA
8	Referent	IA	SSD	1	MARGINEAN SOFIA

SERVICIUL INFORMATICA SI STATISTICA MEDICALA - 19 POSTURI

1	Sef serviciu	II	S	1	LUCA ECATERINA RODICA
2	Analist-programator	IA	S	1	TRIF DANA
3	Economist	IA	S	1	RAILEANU MIHAELA LUMINITA
4	Informatician	I	SSD	1	OANA MIHAELA
5	Analist-programator aj.	IA	M	1	GRECU PAVELINA
6	Economist	II	S	1	CRACIUN ROXANA LACRIMIOARA
7	Operator, controlor date	I	M	1	CODEESCU VALENTIN
8	Operator, controlor date	I	M	1	DRON GEORGETA BEATRICE
9	Operator, controlor date	I	M	1	PETCA DANIELA
10	Operator, controlor date	I	M	1	SZEGEDI IULIA ELENA
11	Operator, controlor date	III	M	1	UNGUR DIANA ELENA
12	Registrator medical	principal	M	1	BOGHIU DOINITA
13	Registrator medical	principal	M	1	MAROSAN IBOLYA
14	Registrator medical	principal	M	1	MATES ELENA
15	Registrator medical		M	1	TOMUTA DORICA
16	Statistician medical	principal	M	1	DARIE MARIA
17	Statistician medical		M	1	PETRIC NICULINA CLAUDIA
18	Statistician medical		M	1	SORCA RAMONA CRISTINA
19	Statistician medical		M	1	DANCIU BIANCA LIGINIA

SERVICIUL ADMINISTRATIV - 49 POSTURI

1	Sef serviciu	II	S	1	LUDOSEAN IOAN
COMPARTIMENT FUNCTIONARI ADMINISTRATIVI - 17 POSTURI					
2	Inginer	IA	S	1	DEACONU LAURIAN-ALIN
3	Preot	I	S	1	VOVOZEANU CONSTANTIN
4	Consilier	II	S	1	MORAR RAZVAN
5	Arhivar		M	1	HORVATH MARIANA
6	Functionar		M	1	GHIARA IONEL MIRCEA
7	Referent	II.	M	1	vacant
8	Referent	IA	M	1	STANILA CARMEN
9	Ingrijitoare		G	1	IVASCAU VIORICA
10	Muncitor necalificat	I		1	SINA VASILE
11	Muncitor necalificat	I		1	VARGA EVA
12	Muncitor calificat (telefonist)	III		1	JULA LILIANA MARIOARA
13	Muncitor calificat (telefonist)	III		1	MIHUT FELICIA
14	Muncitor calificat (telefonist)	III		1	MOCAN AURA MIRELA
15	Muncitor calificat (telefonist)	III		1	MOCANU MONICA
16	Muncitor calificat (telefonist)	III		1	TRIF LILIANA
17	Ingrijitoare		G	1	vacant
18	Ingrijitoare		G	1	vacant

BLOC ALIMENTAR - 15 POSTURI

19	Muncitor calificat (bucatar)	II		1	CASALEAN MARITI
20	Muncitor calificat (bucatar)	III		1	DOLCESCU MARIOARA
21	Muncitor calificat (bucatar)	III		1	DUMITRASCU VOICHITA
22	Muncitor calificat (bucatar)	III		1	MODREA LILIANA
23	Muncitor calificat (bucatar)	III		1	ONET FLORICA
24	Muncitor calificat (bucatar)	IV		1	BUGARIU VICTORIA
25	Muncitor calificat (bucatar)	IV		1	POP SONIA
26	Muncitor calificat (bucatar)	IV		1	ROMAN TITIANA
27	Muncitor calificat (bucatar)	IV		1	SIMOC MARIANA
28	Muncitor calificat (bucatar)	IV		1	SZATMARI OTTO
29	Muncitor calificat (bucatar)	IV		1	UNGUREANU RODICA
30	Muncitor necalificat	I		1	CRISAN PETRU DORIN
31	Muncitor necalificat	I		1	RANESCU SAVEITA
32	Muncitor calificat (bucatar)	III		1	vacant
33	Muncitor calificat (bucatar)	III		1	vacant

SPALATORIA SPITAL -16 POSTURI

34	Magaziner				M	1	MIRCE LAURA
35	Muncitor calificat (lenjereasa)		II			1	ILLES VOICHTA
36	Muncitor calificat (lenjereasa)		II			1	KATO EVA
37	Muncitor calificat (lenjereasa)		II			1	SORINCA LIVIA
38	Spalatoreasa				G	1	BORCA FLOARE
39	Spalatoreasa				G	1	BURZ MARIA
40	Spalatoreasa				G	1	CIORAN GENA
41	Spalatoreasa				G	1	CIUCULESCU MARIA
42	Spalatoreasa				G	1	DEMIAN EMILIA
43	Spalatoreasa				G	1	FLUIERAS EUGENIA
44	Spalatoreasa				G	1	GRUESCU GEANINA
45	Spalatoreasa				G	1	IACOB ANA
46	Spalatoreasa				G	1	JOSAN SOFIA
47	Spalatoreasa				G	1	MURESAN ELENA
48	Spalatoreasa				G	1	SONOC SIMONA-ANGELA
49	Spalatoreasa				G	1	vacant

BIROU INTRETINERE SI REPARATII (ATELIER) - 48 POSTURI

1	Sef birou		I		M	1	INISTOR OCTAVIAN
---	-----------	--	---	--	---	---	------------------

ECHIPA DE INTRETINERE A INSTALATIILOR DE APA SI INCALZIRE - 21 POSTURI

2	Muncitor calificat (foclist)		II			1	PREJBAN ARDELEAN
3	Muncitor calificat (foclist)		III			1	COSTEA FLORIN PETRU
4	Muncitor calificat (foclist)		III			1	JUDE CORNEL
5	Muncitor calificat (foclist)		III			1	LITA IULIAN
6	Muncitor calificat (foclist)		III			1	MOLNAR LEVENTE LEHEL
7	Muncitor calificat (foclist)		III			1	STINGA GABRIEL VASILE
8	Muncitor calificat (foclist)		III			1	TODERAS PAUL
9	Muncitor calificat (foclist)		IV			1	CACEU-BULFTEA MARIAN
10	Muncitor calificat (foclist)		IV			1	ROMAN IOAN
11	Muncitor calificat (instalator)		I			1	BURIAN ALEXANDRU
12	Muncitor calificat (instalator)		I			1	JANOS STEFAN
13	Muncitor calificat (instalator)		I			1	MACARIE EMIL
14	Muncitor calificat (instalator)		I			1	MORAR NICOLAE
15	Muncitor calificat (instalator)		I			1	PROTOP DANIEL
16	Muncitor calificat (instalator)		I			1	VACARI DOREL NICOLAE
17	Muncitor calificat (instalator)		II			1	SAVA IONEL
18	Muncitor calif. (instalator gaze)		II			1	INAN VIOREL
19	Muncitor calif. (instalator gaze)		III			1	MAGDA SERGIU NICOLAE
20	Muncitor calificat (foclist)		II			1	vacant
21	Muncitor calificat (instalator)		I			1	vacant
22	Muncitor calificat (instalator)		II			1	vacant

ECHIPA DE LACATUSI SI ELECTRICIENI - 10 POSTURI

23	Muncitor calificat (electrician)	I	1	ARDELEAN DOINA
24	Muncitor calificat (electrician)	I	1	BUDAU IOAN
25	Muncitor calificat (electrician)	I	1	HANCILA LIVIU
26	Muncitor calificat (electrician)	I	1	JEICAN IOAN
27	Muncitor calificat (electrician)	I	1	PAPALEA STEFAN
28	Muncitor calif. (lacatus mecanic)	I	1	BUDA PETRICA NELU
29	Muncitor calif. (lacatus mecanic)	I	1	PURDA DANIEL TRAIAN
30	Muncitor calif. (lacatus mecanic)	III	1	POPA LUCIAN
31	Muncitor calificat (electrician)	I	1	vacant
32	Muncitor calificat (electrician)	I	1	vacant

ECHIPA DE REPARATII - 5 POSTURI

33	Muncitor calificat (sudor)	III	1	VINERSAR DANIEL STEFAN
34	Muncitor calificat (tamplar)	I	1	TUDOR IULIAN
35	Muncitor calificat (zugrav)	I	1	MUNTEAN EMIL
36	Muncitor calificat (zidar)	I	1	vacant
37	Muncitor calificat (zugrav)	II	1	vacant

ECHIPA DE DESERVIRE A STATIEI DE OXIGEN - 5 POSTURI

38	Muncitor calif. (lacatus mecanic)	I	1	SIRBU IOSIF
39	Muncitor calif. (lacatus mecanic)	II	1	DANCILA CLAUDIU DUMITRU
40	Muncitor calif. (lacatus mecanic)	II	1	IOANI NICOLAE AUREL
41	Muncitor calif. (lacatus mecanic)	III	1	SEBESTYEN ADRIANA
42	Muncitor calif. (lacatus mecanic)	II	1	vacant

ECHIPA DE DESERVIRE A LIFTURILOR - 6 POSTURI

43	Muncitor calificat (liftier)	IV	1	AVRAM DANIELA VIOLETA
44	Muncitor calificat (liftier)	IV	1	BOLDEANU VOICHITA
45	Muncitor calificat (liftier)	IV	1	LUCHIN LIDIA
46	Muncitor calificat (liftier)	IV	1	vacant
47	Muncitor calificat (liftier)	IV	1	vacant
48	Muncitor calificat (liftier)	IV	1	vacant

BIROU TRANSPORT APROVIZIONARE - 12 POSTURI

1	Sef birou deleg.		II	M	1	DINIS EMILIA
2	Magaziner			M	1	DEMIAN MEDELA
3	Magaziner			M	1	MILITARU LAURENTIU
4	Referent		IA	M	1	SELAR SIMONA RODICA
5	Referent		II	M	1	HANCILA CORNELIA ELENA ✓
6	Magaziner			M	1	vacant
7	Muncitor calificat (sofer)		I		1	BUFTEA PETRU
8	Sofer		I		1	CHILARESCU IOAN
9	Sofer		I		1	DASCAL MARCELA LILIANA
10	Sofer		I		1	STINGA DANIEL
11	Muncitor calificat (sofer)		III		1	BIRZAN CODRUT NICOLAE
12	Muncitor calificat (sofer)		II		1	vacant

NR. TOTAL FUNCȚII CONTRACTUALE DE CONDUCERE	41
NR. TOTAL FUNCȚII CONTRACTUALE DE EXECUȚIE	1326
NR. TOTAL POSTURI POTRIVIT ART. III ALIN. (2) DIN O.U.G 63/2010	0
NR. TOTAL FUNCȚII ÎN INSTITUȚIE	1367

BIROU TRANSPORT APROVIZIONARE - 12 POSTURI

1	Sef birou deleg.		II	M	1	DINIS EMILIA
2	Magaziner			M	1	DEMIAN MEDELA
3	Magaziner			M	1	MILITARU LAURENTIU
4	Referent		IA	M	1	SELAR SIMONA RODICA
5	Referent		II	M	1	HANCILA CORNELIA ELENA
6	Magaziner			M	1	vacant
7	Muncitor calificat (sofer)		I		1	BUFTEA PETRU
8	Sofer		I		1	CHILARESCU IOAN
9	Sofer		I		1	DASCAL MARCELA LILIANA
10	Sofer		I		1	STINGA DANIEL
11	Muncitor calificat (sofer)		III		1	BIRZAN CODRUT NICOLAE
12	Muncitor calificat (sofer)		II		1	vacant

NR. TOTAL FUNCȚII CONTRACTUALE DE CONDUCERE	41
NR. TOTAL FUNCȚII CONTRACTUALE DE EXECUȚIE	1326
NR. TOTAL POSTURI POTRIVIT ART. III ALIN. (2) DIN O.U.G 63/2010	0
NR. TOTAL FUNCȚII ÎN INSTITUȚIE	1367

MANAGER

Laza Călin Mircea

