

HOTĂRÂREA NR.100/2015
privind aprobarea Organigramei și a Statului de funcții ale Spitalului Județean de
Urgență Deva

CONSILIUL JUDEȚEAN HUNEDOARA;

Având în vedere nota de fundamentare la proiectul de hotărâre, raportul de specialitate al compartimentelor de resort, precum și raportul comisiilor de specialitate ale Consiliului Județean;

Văzând adresa nr. 11655/10.06.2015 a managerului Spitalului Județean de Urgență Deva, înregistrată la Consiliul Județean Hunedoara cu nr. 6859/10.06.2015;

În baza anexei nr. 1 lit. a pct. 1 și pct 2, lit. c pct. 4 la Ordinului Ministrului Sănătății nr. 1224/2010 privind aprobarea normativelor de personal pentru asistența medicală spitalicească;

Conform Hotărârii nr. 286/2011 privind aprobarea Regulamentului-cadru privind stabilirea principiilor generale de ocupare a unui post vacant sau temporar vacant corespunzător funcțiilor contractuale și a criteriilor de promovare în grade sau trepte profesionale imediat superioare a personalului contractual din sectorul bugetar plătit din fonduri publice, cu modificările și completările ulterioare;

Având în vedere prevederile art.182 alin.1.lit.a din Legea nr.95/2006 privind reforma în domeniul sănătății, cu modificările și completările ulterioare;

În temeiul dispozițiilor art.91 alin.1 lit. a, alin.2 lit.c și ale art.97 alin.1 din Legea administrației publice locale nr.215/2001, republicată, cu modificările și completările ulterioare ;

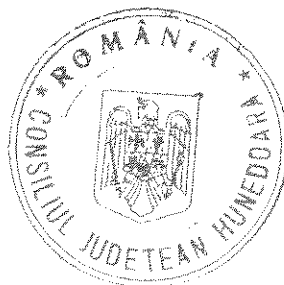
HOTĂRĂȘTE:

Art.1 – Aprobă Organigrama și Statul de funcții ale Spitalului Județean de Urgență Deva, conform anexei nr. 1 și anexei nr. 2 care fac parte integrantă din prezenta, începând cu data intrării în vigoare a prezentei.

Art.2 – Hotărârea nr. 37/2015 a Consiliului Județean Hunedoara se abrogă, începând cu data intrării în vigoare a prezentei.

Art.3 – Prezenta va fi dusă la îndeplinire de Spitalul Județean de Urgență Deva și va fi comunicată celor interesați prin grija Serviciului administrație publică locală, relații publice, ATOP din cadrul aparatului de specialitate al Consiliului Județean Hunedoara.

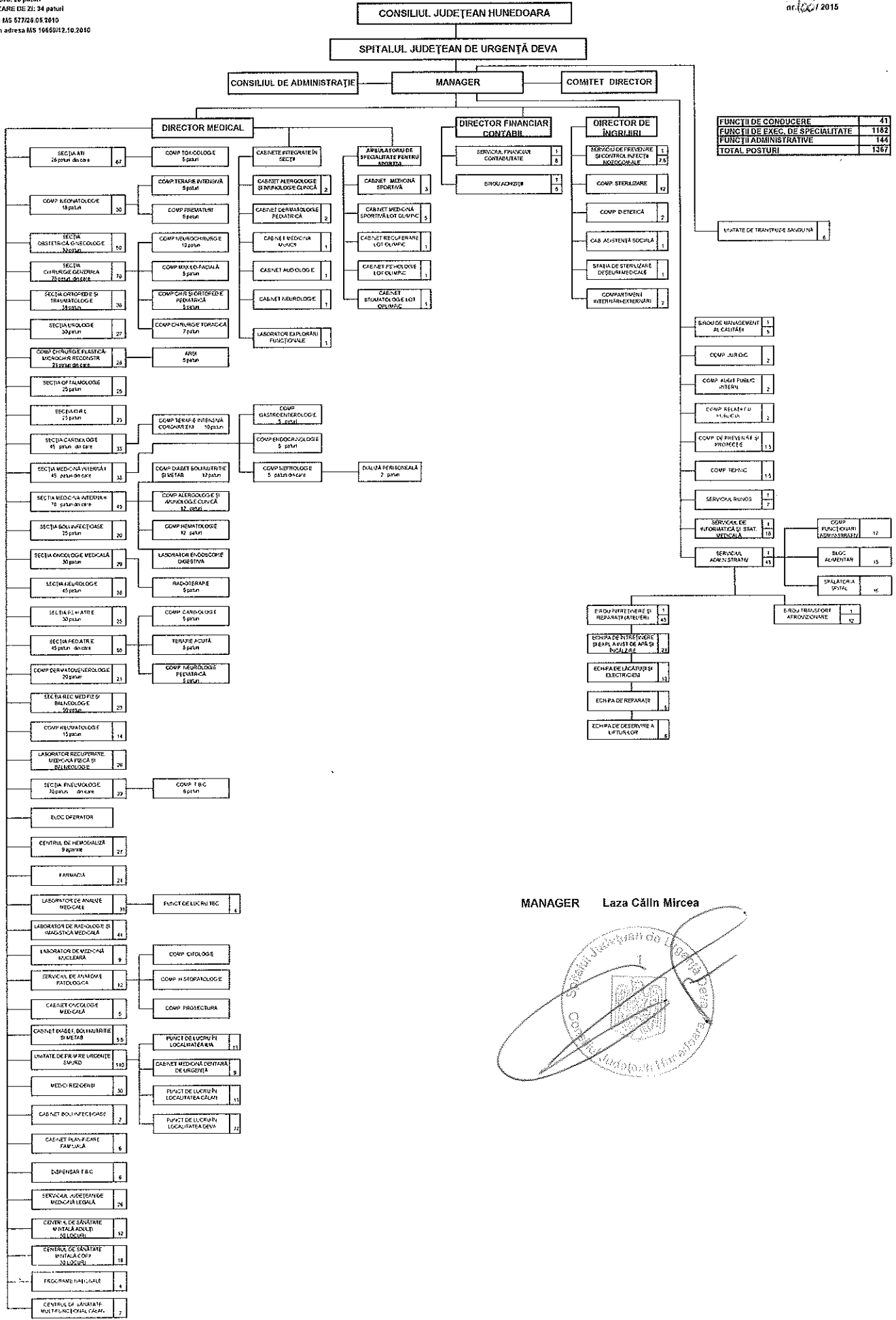
PREȘEDINTE,
Adrian Nicolae David



CONTRASEMNEAZA:
SECRETAR AL JUDEȚULUI,
Ștefoni Sorin Dumitru

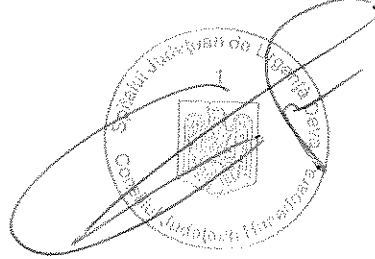


Deva, la 17 iunie 2015



FUNCTII DE CONDUCERE	41
FUNCTII DE EXEC. DE SPECIALITATE	1182
FUNCTII ADMINISTRATIVE	144
TOTAL POSTURI	1367

MANAGER Laza Călin Mircea



STAT DE FUNCȚII

Nr. crt.	Structura	Funcția contractuală		Treapta profesională	Nivelul studiilor	Cuantum post	Numele și prenumele
		de conducere	de execuție				
COMITET DIRECTOR - 4 POSTURI							
1		Manager		II	S	1	LAZA CĂLIN-MIRCEA
2		Director medical		II	S	1	DEMETER IOAN
3		Director financiar contabil		II	S	1	STĂNESCU VETUȚA
4		Director de îngrijiri interimar		II	S	1	MILITARU LENUȚA CORINA
SECȚIA A.T.I. - 67 POSTURI							
Paturi: 26; din care: Secție 21; Comp.Toxicologie 5							
1		Medic primar-sef secție		II	S	1	NEAGU DANUT
2		Medic primar			S	1	CAPRARIN DIANA
3		Medic primar			S	1	KOVACS IOANA
4		Medic specialist			S	1	ILIE GABRIEL FLORIN -temporar vacant
5		Medic specialist			S	1	ROSU SILVIU NICOLAE
6		Medic specialist			S	1	vacant
7		Medic primar			S	1	vacant
8		Medic primar			S	1	vacant
9		Medic primar			S	1	vacant
10		Asistent medical-sef		principal	PL	1	BODREANU CORNELIA
11		Asistent medical		principal	PL	1	AXENTE MARIANA
12		Asistent medical		principal	PL	1	BOZAN MARIA
13		Asistent medical		principal	PL	1	BROTEA MARIANA
14		Asistent medical		principal	PL	1	BUTUC CORINA
15		Asistent medical		principal	PL	1	COSTEA GEORGETA
16		Asistent medical		principal	PL	1	DARAU LUCIA IOSANA
17		Asistent medical		principal	PL	1	FARCA DANIELA
18		Asistent medical		principal	PL	1	GABOR BIANCA LIANA
19		Asistent medical		principal	PL	1	GHIERGHE ALINA VASILICA
20		Asistent medical		principal	PL	1	JUNEA MARIANA CRISTINA
21		Asistent medical		principal	PL	1	LEMNE ENIKO
22		Asistent medical		principal	PL	1	LUDUSAN EUGENIA
23		Asistent medical		principal	PL	1	MAGDA INGRID
24		Asistent medical		principal	S	1	MELNIC TEODOR CONSTANTIN
25		Asistent medical		principal	PL	1	NEAMT DANIELA MIOARA

26		Asistent medical		principal	PL	1	OGIOIU NINA
27		Asistent medical		principal	PL	1	ONCIUL LACRAMIOARA
28		Asistent medical		principal	PL	1	OPREAN RAMONA ELENA
29		Asistent medical		principal	S	1	PAP CARMEN
30		Asistent medical		principal	SSD	1	PASCU DIANA CECILIA
31		Asistent medical		principal	SSD	1	POPESCU MONICA
32		Asistent medical		principal	S	1	PEDA FLORIANA
33		Asistent medical		principal	PL	1	RAT DORINA
34		Asistent medical		principal	PL	1	SCHLUNSKY ANA MARIA
35		Asistent medical		principal	S	1	SESOVICI SILVIA
36		Asistent medical		principal	PL	1	SMEU MIRELA AMELIA
37		Asistent medical		principal	PL	1	SOREANU BIANCA TATIANA
38		Asistent medical		principal	PL	1	STANCI LAVINIA SIMONA
39		Asistent medical		principal	PL	1	STEFAN ELENA
40		Asistent medical		principal	PL	1	TOADER GHEORGHE
41		Asistent medical		principal	PL	1	TOMUTA RAMONA OFELIA
42		Asistent medical		principal	PL	1	TURZAI SILVIA
43		Asistent medical		principal	PL	1	VALEA ILEANA
44		Asistent medical		principal	PL	1	VASILE LUMINITA
45		Asistent medical			PL	1	MAROSAN SZIDONIA
46		Asistent medical			PL	1	PETCU DANIELA FELICIA
47		Asistent medical			PL	1	POP PETRONELA ELENA
48		Statistician medical		principal	M	1	ANDRONE NICOLETA DELIA
49		Asistent medical			PL	1	vacant
50		Asistent medical		principal	PL	1	vacant
51		Asistent medical		principal	PL	1	vacant
52		Infirmiera			G	1	ANITA ELENA IRINA
53		Infirmiera			G	1	BOCIOACA NICOLETA
54		Infirmiera			G	1	BORDEA MARCELA - DANA
55		Infirmiera			G	1	CRACIUN CARMEN MARINELA
56		Infirmiera			G	1	GERMAN VIRGINICA
57		Infirmiera			G	1	ILLE MARIA
58		Infirmiera			G	1	RADU RAMONA
59		Infirmiera			G	1	ROZNOV CARMEN
60		Infirmiera			G	1	STOICHITOIU LILIANA
61		Brancardier			G	1	vacant
62		Brancardier			G	1	PACURAR DORIN CORNEL
63		Brancardier			G	1	VULPESCU CIPRIAN
64		Ingrjitoare			G	1	MIHAILESCU VERONICA
65		Ingrjitoare			G	1	ALBA ANA
66		Ingrjitoare			G	1	vacant
67		Ingrjitoare			G	1	vacant

UNITATEA DE TRANSFUZIE SANGUINĂ - 6 POSTURI

1	Asistent medical		PL	1	vacant
2	Asistent medical		PL	1	vacant
3	Asistent medical		PL	1	vacant
4	Asistent medical		PL	1	vacant
5	Statistician medical		M	1	vacant
6	Îngrijitoare		G	1	vacant

COMPARTIMENT NEONATOLOGIE - 30 POSTURI

Paturi: 18; din care: Comp. Neonatologie 8; Comp. Terapie intensiva 5; Comp. Prematuri 5

1	Medic primar		S	1	IONESCU BUFLEA MARINELA
2	Medic primar		S	1	LUCA PARASCHIVA
3	Medic primar		S	1	MATASARU ALINA HELGA
4	Medic primar		S	1	vacant
5	Asistent medical	principal	PL	1	CUJAVA LUMINITA
6	Asistent medical	principal	PL	1	DUMITRESCU MARIANA
7	Asistent medical	principal	PL	1	IACOB LIGIA
8	Asistent medical	principal	S	1	IANOSI ECATERINA
9	Asistent medical	principal	PL	1	MITAR MARIANA
10	Asistent medical	principal	PL	1	POP VIRGINIA MARIA
11	Asistent medical	principal	PL	1	PRICOP ELENA
12	Asistent medical	principal	PL	1	VRACIU RODICA
13	Asistent medical		PL	1	BOANTA ROZALIA
14	Asistent medical		PL	1	GLIGOR MIHAELA VIOLETA
15	Asistent medical		PL	1	LUNGU MARIANA
16	Asistent medical		PL	1	vacant
17	Asistent medical		PL	1	vacant
18	Asistent medical		PL	1	vacant
19	Statistician medical		M	1	vacant
20	Infiriera		G	1	ANDONE VALERICA
21	Infiriera		G	1	LUCACIU LILIANA GABRIELA
22	Infiriera		G	1	MOISIUC RODICA
23	Infiriera		G	1	NEGRILA VIOLETA LILIANA
24	Infiriera		G	1	POENAR ILEANA
25	Infiriera		G	1	SINA LIOARA DANIELA
26	Infiriera		G	1	vacant
27	Infiriera		G	1	vacant
28	Infiriera		G	1	vacant
29	Infiriera		G	1	vacant
30	Îngrijitoare		G	1	vacant

SECTIA OBSTETRICA-GINECOLOGIE - 50 POSTURI

Patuti: 30; din care: Sectie 30

1	Medic primar-sef sectie		I	S	1	STANESCU ROMEO
2	Medic primar			S	1	CLEPCE SERBAN
3	Medic primar			S	1	DEMETER RODICA
4	Medic specialist			S	1	POP RALUCA BOGDANA
5	Medic primar			S	1	vacant
6	Medic primar			S	1	vacant
7	Asistent medical-sef		principal	S	1	CORDEA MARIA MIHAELA
8	Asistent medical		principal	PL	1	ATINGE CAMELIA
9	Asistent medical		principal	PL	1	BARBU MIHAELA LILIANA
10	Asistent medical		principal	PL	1	COTET ANGELA
11	Asistent medical		principal	S	1	FARCAS IULIANA CARMEN
12	Asistent medical		principal	PL	1	FOLTUT FELICIA SILVANA
13	Asistent medical		principal	PL	1	FOLTUT VIOLETA LEONTINA
14	Asistent medical		principal	PL	1	GHERMAN DANIELA
15	Asistent medical		principal	PL	1	HUIET ADRIANA MIHAELA
16	Asistent medical		principal	PL	1	MANEA SIMONA ELENA
17	Asistent medical		principal	PL	1	MUNTEANU MIOARA
18	Asistent medical		principal	PL	1	PANTILE ANA SIMONA
19	Asistent medical		principal	PL	1	RADU GEORGETA
20	Asistent medical		principal	PL	1	ROVINAR LILIANA FELICIA
21	Asistent medical		principal	PL	1	VASILIU ELENA
22	Asistent medical			PL	1	ILCA MANUELA CORINA
23	Asistent medical			PL	1	MARIAN CRISTINA
24	Asistent medical			PL	1	SCUTARU ADRIANA
25	Asistent medical			PL	1	SILASI DARIA DANIELA
26	Moasa		principal	S	1	ARDELEAN MARIA
27	Moasa		principal	S	1	BOTA IONELA CARMEN
28	Moasa		principal	S	1	MIHAASA RODICA
29	Moasa		principal	S	1	RAT ANCA
30	Moasa		principal	S	1	TIF DIANA EUGENIA
31	Statistician medical		principal	M	1	FURCA DANA
32	Asistent medical		principal	PL	1	vacant
33	Asistent medical		principal	PL	1	vacant
34	Asistent medical		principal	PL	1	vacant
35	Asistent medical		principal	PL	1	vacant
36	Infirmiera			G	1	FLORICAN ANGELA
37	Infirmiera			G	1	FODOR MARIA ECATERINA
38	Infirmiera			G	1	KOJAN MARIA
39	Infirmiera			G	1	MORAR IRINA MARIA
40	Infirmiera			G	1	NASTAC VASILICA

41		Infirmiera			G	1	SAV NICULINA
42		Infirmiera			G	1	TALAGIU ELENA COSINA
43		Infirmiera			G	1	TODERAS SIDONIA
44		Ingrijitoare			G	1	BOTICI RAMONA CRISTINA
45		Infirmier			G	1	FRUNZA LUCIAN
46		Infirmiera			G	1	vacant
47		Infirmiera			G	1	vacant
48		Infirmiera			G	1	vacant
49		Infirmiera			G	1	vacant
50		Infirmiera			G	1	vacant

SECTIA CHIRURGIE GENERALA - 70 POSTURI

Paturi: 75; din care: Sectie 48; Comp.Chir.Maxilo-Faciala 5; Comp.Neurochir. 10; Comp.Chir.si Ortop.Ped. 5; Comp.Chir.Toracica 7

1	Medic primar-sef sectie			II	S	1	BLENDEA MARIUS VASILE
2	Medic primar				S	1	BAGACEANU POPA RAUL
3	Medic primar				S	1	FOTESCU NICOLAE RADU
4	Medic primar				S	1	RADOI VASILE
5	Medic primar				S	1	STOICA ADRIAN LEONARD
6	Medic primar				S	1	TOMA DAN CRISTIAN
7	Medic primar				S	1	GROZA LIVIU
8	Medic primar				S	1	POP CIPRIAN IOAN
9	Medic specialist				S	1	DOROGA SORIN NICOLAE
10	Medic specialist				S	1	FLUIERAS SEBASTIAN NICOLAE
11	Medic specialist				S	1	GIRLEANU LAVINIA
12	Medic specialist				S	1	STOICESCU VLADIMIR
13	Medic primar				S	1	vacant
14	Asistent medical-sef			principal	PL	1	CARABAS VIORICA
15	Asistent medical			principal	PL	1	ACHIMESCU CORINA
16	Asistent medical			principal	PL	1	BOLDURA LACRIMIOARA
17	Asistent medical			principal	PL	1	BRICIERU ANDREEA
18	Asistent medical			principal	PL	1	CIOBOTARU DELIA CRISTINA
19	Asistent medical			principal	PL	1	CIOMAG CLAUDIA
20	Asistent medical			principal	PL	1	COCIS ELENA
21	Asistent medical			principal	PL	1	COCOTA LILIANA
22	Asistent medical			principal	PL	1	FILIMON VIORICA DANELA
23	Asistent medical			principal	PL	1	GAVRILUTA CAMELIA
24	Asistent medical			principal	PL	1	HUH MARIA ANISOARA
25	Asistent medical			principal	PL	1	KOVACS KATALIN
26	Asistent medical			principal	PL	1	LUNGU MARIA ADELINA
27	Asistent medical			principal	PL	1	MIHOC VIVIANA GABRIELA
28	Asistent medical			principal	PL	1	NAN LAVINIA
29	Asistent medical			principal	PL	1	NOROC NICOLETA

30			Asistent medical		principal	PL	1	PRICOB PETRONELA ADELINA
31			Asistent medical		principal	PL	1	RADU SILVIA
32			Asistent medical		principal	PL	1	ROTEA MIRONELA LOREDANA
33			Asistent medical		principal	PL	1	STREANGA MARIA
34			Asistent medical		principal	PL	1	SUCIU CLAUDIA
35			Asistent medical		principal	PL	1	SZABO MAGDOLNA
36			Asistent medical		principal	PL	1	SZEMCSUK VIOLETA
37			Asistent medical		principal	PL	1	TODOR ADINA
38			Asistent medical		principal	PL	1	TURBUTIU RODICA MIOARA
39			Asistent medical			PL	1	BOTA RAMONA-CLAUDIA
40			Asistent medical			PL	1	GYORFI ANA IRMA
41			Asistent medical			PL	1	KOVACS ANDREEA ANGELA
42			Asistent medical			PL	1	MERA IONEL
43			Statistician medical		principal	M	1	FARCAS RAMONA TATIANA
44			Asistent medical		principal	PL	1	vacant
45			Asistent medical		principal	PL	1	vacant
46			Asistent medical		principal	PL	1	vacant
47			Asistent medical			SSD	1	vacant
48			Infirmiera			G	1	BANCIU RODICA CRISTINA
49			Infirmiera			G	1	BEDEA RODICA
50			Infirmiera			G	1	CERGHEDEAN ANGELA LEONTINA
51			Infirmiera			G	1	CHICIREANU ELENA
52			Infirmiera			G	1	DUBARIU RODICA
53			Infirmiera			G	1	HANES ADRIANA VETUTA
54			Infirmiera			G	1	LITEANU LORENA
55			Infirmiera			G	1	MICLOS ILEANA
56			Infirmiera			G	1	POPA ADRIANA
57			Infirmiera			G	1	RUS MARIOARA
58			Infirmiera			G	1	SOMFELEANU VIORICA
59			Infirmiera			G	1	ZAVOIANU VICTORIA
60			Infirmiera		debutant	G	1	BOZANDEAN-OANCEA RAMONA ANDREEA
61			Ingrjitoare			G	1	IACOB MARIANA ROZALIA
62			Ingrjitoare			G	1	MICUTIU CRISTINA-ADINA
63			Ingrjitoare			G	1	MOGA MARIA FLORICA
64			Brancardier			G	1	ANCA ANDREI OCTAVIAN
65			Brancardier			G	1	AVRAM MARINEL
66			Brancardier			G	1	vacant
67			Infirmiera			G	1	vacant
68			Infirmiera			G	1	vacant
69			Infirmiera			G	1	vacant
70			Infirmiera			G	1	vacant

SECTIA ORTOPIEDIE SI TRAUMATOLOGIE - 36 POSTURI

Patuti: 38; din care: Sectie 38

1	Medic primar-sef sectie		II	S	1	BRINDA IOAN
2	Medic primar			S	1	PLATON ION
3	Medic primar			S	1	POP DAN VASILE
4	Medic primar			S	1	TIMAR GRIGORE
5	Medic specialist			S	1	vacant
6	Kinetoterapeut			S	1	BOZDOG BOGDAN COSMIN
7	Asistent medical-sef		principal	S	1	SZEKELY MARIANA
8	Asistent medical		principal	PL	1	BOGOS ELISABETA
9	Asistent medical		principal	PL	1	CODOBAN SIMONA
10	Asistent medical		principal	PL	1	GHERGHE MARIANA
11	Asistent medical		principal	PL	1	JACOB ELENA ANDREEA
12	Asistent medical		principal	PL	1	IANC SANDA ILEANA
13	Asistent medical		principal	PL	1	MANASIE CARMEN SOFIA
14	Asistent medical		principal	PL	1	POPESCU MIRELA
15	Asistent medical		principal	PL	1	RIZO IOAN
16	Asistent medical		principal	PL	1	ROSAN MARCELA
17	Asistent medical		principal	PL	1	SMEU DANIEL
18	Asistent medical		principal	PL	1	STEFAN ALINA MIHAELA
19	Asistent medical		principal	PL	1	TULEA CLAUDIA
20	Asistent medical			PL	1	BRUSTUREAN CARMEN
21	Asistent medical			PL	1	BURADA MIHAELA DORICA
22	Statistician medical		principal	M	1	OLARIU MARGARETA
23	Asistent medical			SSD	1	vacant
24	Infirmiera			G	1	BOITI RAMONA
25	Infirmiera			G	1	BOTA ILEANA
26	Infirmiera			G	1	COJOCARU TANIUSA
27	Infirmiera			G	1	JACOB CODRUTA ANGELA
28	Infirmiera			G	1	MARIAN MARIA
29	Infirmiera			G	1	POPA OLIVIA SIDONIA
30	Infirmiera			G	1	SABAU EMILIA OTILIA
31	Infirmiera			G	1	SUCIU VIORICA
32	Ingrjitoare			G	1	CHEREGI DANIELA GEORGETA
33	Ingrjitoare			G	1	SICOE MIHAELA
34	Brancardier			G	1	CRIHANA NICOLAE
35	Brancardier			G	1	VASIU RADU PETRU
36	Infirmiera			G	1	vacant

SECTIA UROLOGIE - 27 POSTURI

Paturi: 30; din care: Sectie 30

1	Medic primar-sef sectie		I	S	1	RADULESCU IOAN
2	Medic primar			S	1	DAIAN ISAI DAVID
3	Medic primar			S	1	MITRANOVICI EMIL
4	Medic specialist			S	1	vacant
5	Asistent medical-sef		principal	PL	1	LUTU RODICA
6	Asistent medical		principal	PL	1	BULC LUCIA
7	Asistent medical		principal	PL	1	CISMAS ADA ELENA
8	Asistent medical		principal	PL	1	HODOR MARCELA
9	Asistent medical		principal	PL	1	HOJBOTA LAURA
10	Asistent medical		principal	PL	1	LUCA ROXANA ALINA
11	Asistent medical		principal	PL	1	PRUSUS CRISTIAN
12	Asistent medical		principal	S	1	SARKOZI ANA MARIA
13	Asistent medical		principal	PL	1	SOCACI ANA
14	Asistent medical		principal	PL	1	SOMAN ALINA LIVIA
15	Asistent medical		principal	PL	1	STRATICA MANUELA
16	Statistician medical			M	1	STOICA ADELA
17	Asistent medical		principal	PL	1	vacant
18	Asistent medical			PL	1	vacant
19	Infirmiera			G	1	BOTEZATU ANICA
20	Infirmiera			G	1	DUDA ALINA
21	Infirmiera			G	1	GUIA ADELA MONICA
22	Infirmiera			G	1	HAUDUC MARIA CRISTINA
23	Infirmiera			G	1	PETER NELIA
24	Infirmiera			G	1	SELEJAN MARIANA DANIELA
25	Infirmiera			G	1	vacant
26	Ingrijitoare			G	1	vacant
27	Brancardier			G	1	vacant

COMPARTIMENT CHIRURGIE PLASTICA - MICROCHIRURGIE - 28 POSTURI

Paturi: 21; din care: Compartiment 16; Arsi 5

1	Medic primar			S	1	CLEPCE CORINA CRISTINA
2	Medic primar			S	1	LUCULESCU PAULA
3	Medic specialist			S	1	vacant
4	Asistent medical		principal	PL	1	ANCA ALINA
5	Asistent medical		principal	PL	1	BOTEZAT CECILIA
6	Asistent medical		principal	PL	1	CAPATAN MIHAELA
7	Asistent medical		principal	PL	1	DEACONU OLIMPIA
8	Asistent medical		principal	PL	1	FLOREA CAMELIA
9	Asistent medical		principal	PL	1	FLORESCU MARIANA
10	Asistent medical		principal	PL	1	GHIBU AURICA
11	Asistent medical		principal	S	1	LUCA CRISTINA TITIANA
12	Asistent medical		principal	PL	1	TITEL LENUTA

13		Asistent medical	principal	PL	1	URSU NICOLITA
14		Statistician medical	principal	M	1	VERES-MORARU NICOLETA-IULIANA
15		Asistent medical		PL	1	vacant
16		Asistent medical		PL	1	vacant
17		Asistent medical		PL	1	vacant
18		Infirmiera		G	1	BALUTA MARIA
19		Infirmiera		G	1	JESCU VIORICA
20		Infirmiera		G	1	MANICAN GEANINA DACIANA
21		Infirmiera		G	1	MIELUT MARIANA LENUITA
22		Infirmiera		G	1	ORDEAN GHEORGHITA
23		Infirmiera		G	1	PAVEL DORINA-MARIANA
24		Infirmiera		G	1	vacant
25		Infirmiera		G	1	vacant
26		Infirmiera		G	1	vacant
27		Infirmiera		G	1	vacant
28		Infirmiera		G	1	vacant

SECTIA OFTALMOLOGIE - 25 POSTURI

Paturi: 25; din care: Sectie 25

1	Medic primar-sef sectie		I	S	1	MICLAUS DIANA
2	Medic primar			S	1	ANGELESCU LACRIMA CARMEN
3	Medic primar			S	1	ANGELESCU REMUS
4	Medic primar			S	1	CABA CORINA
5	Medic primar			S	1	FEIER CORINA MONICA MARIA
6	Medic specialist			S	1	vacant
7	Asistent medical-sef		principal	PL	1	HAJDU ILDIKO HERIETTE
8	Asistent medical		principal	PL	1	BOBAILA CLAUDIA ELENA
9	Asistent medical		principal	PL	1	BODEA NICOLETA LUMINITA
10	Asistent medical		principal	PL	1	BUMBU MIHAELA ILEANA
11	Asistent medical		principal	PL	1	DORNEANU ANCA MARIA
12	Asistent medical		principal	PL	1	DUBARIU RAMONA
13	Asistent medical		principal	PL	1	HAJDU ADRIANA
14	Asistent medical		principal	PL	1	KARSAI RAMONA
15	Asistent medical		principal	PL	1	MOLDOVAN TEODORA MARIA
16	Asistent medical		principal	PL	1	MUNTEANU VIOLETA FLORICA
17	Asistent medical		principal	PL	1	PETRUSE GABRIELA SIMONA
18	Statistician medical			M	1	TARLEA LUIZA TUDORA
19	Asistent medical		principal	PL	1	vacant
20	Asistent medical			PL	1	vacant
21	Infirmiera			G	1	CAZAN MARIA NICOLETA
22	Infirmiera			G	1	DUBAR LUCIA
23	Infirmiera			G	1	POPA MARIOARA
24	Infirmiera			G	1	STOIA FELICIA CORNELIA
25	Infirmiera			G	1	TOMUTA CRISTINA

SECTIA ORL - 23 POSTURI

Paturi: 25; din care: Sectie 25

1	Medic primar-sef sectie		I	S	1	MARCUS ANTONETA GRATIELA
2	Medic primar			S	1	BOGDAN ADRIAN
3	Medic specialist			S	1	BALGRADEAN LUMINITA MARIA
4	Medic primar			S	1	vacant
5	Medic primar			S	1	vacant
6	Asistent medical-sef		principal	S	1	STANCULESCU FLORICA MARINELA
7	Asistent medical		principal	PL	1	BOTA IRINA
8	Asistent medical		principal	S	1	CIOBOTA CONSUELA
9	Asistent medical		principal	PL	1	ERCSI EMESE
10	Asistent medical		principal	S	1	FRENTONI CLAUDIA
11	Asistent medical		principal	S	1	MELNIC DOINA
12	Asistent medical		principal	S	1	SZATMARI BRIGITTA
13	Asistent medical		principal	PL	1	VARDEA IONELA
14	Asistent medical			PL	1	HORVATH AMALIA CARMEN
15	Asistent medical			PL	1	LUP GAROFITA-LENUITA
16	Asistent medical			PL	1	ROTARU MONICA
17	Statistician medical			M	1	vacant
18	Infirmiera			G	1	LAPUGEAN LAVINICA
19	Infirmiera			G	1	LIA MARIANA SIMONA
20	Infirmiera			G	1	NEMES CORINA AGAFTEA
21	Infirmiera			G	1	SCORNEA ANCUTA MARIA
22	Infirmiera			G	1	SERBAN AURELIA
23	Infirmiera			G	1	VLAD CARMEN VIOLETA

SECTIA CARDIOLOGIE - 35 POSTURI

Paturi: 45; din care: Sectie 35; Comp. Terapie Intensiva Coronarieni 10

1	Medic primar-sef sectie		II	S	1	BASARAB GHEORGHE VASILE
2	Medic primar			S	1	BLAJ CONSTANTIN SABIN
3	Medic primar			S	1	CRISNIC ANA
4	Medic specialist			S	1	STOICA DIANA ANDREEA
5	Medic primar			S	1	vacant
6	Medic specialist			S	1	vacant
7	Asistent medical-sef		principal	S	1	SANDOR AURORA MARIANA
8	Asistent medical		principal	PL	1	ACASANDREI ENIKO
9	Asistent medical		principal	PL	1	ALMASAN DIANA NICOLETA
10	Asistent medical		principal	PL	1	BARBU SIMONA VIORICA
11	Asistent medical		principal	PL	1	BOLD LUMINITA MONICA
12	Asistent medical		principal	PL	1	CIBIAN CARMEN
13	Asistent medical		principal	PL	1	CIUCA LIANA
14	Asistent medical		principal	PL	1	CORNEA GEORGETA MIRELA
15	Asistent medical		principal	PL	1	DRAIA DANIELA MARIANA

16		Asistent medical		principal	PL	1	FOGOROSI CARMEN SOFIA
17		Asistent medical		principal	PL	1	MADASA AURELIA
18		Asistent medical		principal	PL	1	MALEA CLAUDIA LAVINIA
19		Asistent medical		principal	PL	1	MIGNEA MECIKOWSCHI CRISTINA
20		Asistent medical		principal	PL	1	NANDREA ILDIKO
21		Asistent medical		principal	S	1	ROMAN KATALIN
22		Asistent medical		principal	PL	1	VISAN SIMONA LOREDANA
23		Asistent medical			PL	1	LUNG CRISTINA LOREDANA
24		Statistician medical			M	1	SERESTELY LEVENTE SZABOLCS
25		Infirmiera			G	1	ANDRICA MARIANA ANGELICA
26		Infirmiera			G	1	ANGELESCU LAURA
27		Infirmiera			G	1	DOBREA ECATERINA
28		Infirmiera			G	1	PEPTAN IOANA
29		Infirmiera			G	1	STIOLNA DORINA NICOLETA
30		Ingrijitoare			G	1	MOLDOVAN CARMEN
31		Ingrijitoare			G	1	MUSESCU ILEANA
32		Infirmiera			G	1	vacant
33		Infirmiera			G	1	vacant
34		Infirmiera			G	1	vacant
35		Infirmiera			G	1	vacant

SECTIA MEDICINA INTERNA I - 38 POSTURI

Paturi: 45; din care: Sectie 30: Comp.Endocrin.5:Comp.Nefr. 5:Comp.gastroent 5

1		Medic primar-sef sectie del.		II	S	1	BADAU VALENTIN TEODOR
2		Medic primar			S	1	vacant temporar
3		Medic primar			S	1	BLENDEA DANIELA
4		Medic primar			S	1	BUDURA RUSU ROMANA
5		Medic primar			S	1	LUPSE DIANA
6		Medic primar			S	1	NEGRILA MIHAELA CECILIA
7		Medic primar			S	1	vacant temporar
8		Medic specialist			S	1	vacant
9		Asistent medical-sef		principal	PL	1	IOANI SIMONA
10		Asistent medical		principal	PL	1	CHELARIU CRISTINA
11		Asistent medical		principal	PL	1	CRAINIC MIHAELA
12		Asistent medical		principal	PL	1	GABOR ANGELA
13		Asistent medical		principal	PL	1	GIURGIU FLORINELA MARIA
14		Asistent medical		principal	PL	1	KOVALCSIK KLARA
15		Asistent medical		principal	PL	1	LUPULESCU SIMONA MARIA
16		Asistent medical		principal	PL	1	MARGINEAN CLAUDIA IULIANA
17		Asistent medical		principal	PL	1	MOTORGA GEORGETA
18		Asistent medical		principal	PL	1	NEGRU ALINA MARIA
19		Asistent medical		principal	S	1	PETRUSE ALINA LOREDANA

20		Asistent medical		principal	PL	1	POPA ANCUTA ADELINA
21		Asistent medical		principal	PL	1	SERBAN MARIANA IULIANA
22		Asistent medical		principal	S	1	SOLOMON MIHAELA
23		Asistent medical			PL	1	BAL SABINA
24		Asistent medical			PL	1	DANCILA LACRAMIOARA LENUTA
25		Asistent medical			PL	1	MALAIU ANA MARIA
26		Asistent medical			PL	1	MIHU CLAUDIA FLORINA
27		Statistician medical			M	1	ZUGRAVU NICOLETA-DANIELA
28		Asistent medical		principal	PL	1	BALEA NICOLETA LUMINITA
29		Asistent medical		principal	PL	1	vacant
30		Asistent medical			PL	1	vacant
31		Infirmiera			G	1	DALOG CORNELIA
32		Infirmiera			G	1	OLARASU GABRIELA
33		Infirmiera			G	1	PETRESC MIHAELA ANISOARA
34		Infirmiera			G	1	PETRUT ELENA
35		Infirmiera			G	1	VANCEA ILEANA
36		Infirmiera			G	1	VARGA EMILIA GEORGETA
37		Ingrjiitoare			G	1	ALBA RAMONA
38		Ingrjiitoare			G	1	vacant

SECTIA MEDICINA INTERNA II - 45 POSTURI

Paturi: 70; din care: Sectie 34; Comp.Alergologie si Imunol. Clinica 12; Comp. Hematologie 12; Comp. Diab.zaharat, Nutritie si Boli Met.12; Lab.endoscopie digestiva

1		Medic primar-sef sectie del.		II	S	1	RAD LIVIU
2		Medic primar			S	1	AVRAM RODICA IOANA
3		Medic primar			S	1	GLODEAN ONESC BIANCA
4		Medic primar			S	1	MAGHERU DAN ADRIAN
5		Medic primar			S	1	ROMAN TANIA
6		Medic primar			S	1	vacant temporar
7		Medic primar			S	1	vacant
8		Medic primar			S	1	vacant
9		Asistent medical-sef		principal	PL	1	CLEJ EMILIA
10		Asistent medical		principal	PL	1	ALBA ALINA
11		Asistent medical		principal	S	1	ALBA FLORINA
12		Asistent medical		principal	S	1	AMBROSEI ELENA CRISTINA
13		Asistent medical		principal	PL	1	BOZAN CARMEN MIHAELA
14		Asistent medical		principal	PL	1	BOZESAN IOANA
15		Asistent medical		principal	PL	1	BUTINCU BIANCA VANESA
16		Asistent medical		principal	S	1	CHERECHES EVA
17		Asistent medical		principal	PL	1	COTIUGA SIMONA
18		Asistent medical		principal	S	1	DRAGOS ANTONELA MARIA
19		Asistent medical		principal	PL	1	HADUC MIRELA
20		Asistent medical		principal	S	1	KASLER MONICA
21		Asistent medical		principal	PL	1	PRUNA EMILIA DOAGA
22		Asistent medical		principal	PL	1	PURDA MIHAELA

23		Asistent medical		principal	S	1	PURTUC OLIVIA CLAUDIA
24		Asistent medical		principal	PL	1	STANCIULESCU LUMINITA
25		Asistent medical			S	1	BARABAS IULIANA CLAUDIA
26		Asistent medical			PL	1	COTOARA CRISTINA-ELENA
27		Asistent medical			PL	1	FLOREA DANIELA
28		Asistent medical			PL	1	HERBEI ALEXANDRA IOANA
29		Asistent medical			PL	1	MANATIE EVA MARIA
30		Asistent medical			PL	1	MIREA CRISTINA RAMONA
31		Asistent medical			PL	1	VLAICU OANA EMANUELA
32		Statistician medical		principal	M	1	SOANCA ADRIANA
33		Statistician medical			M	1	MOLDOVAN RODICA GABRIELA
34		Statistician medical			M	1	vacant
35		Infirmiera			G	1	ALBA MARIANA LENUTA
36		Infirmiera			G	1	BALAN MARIA
37		Infirmiera			G	1	CAINANT LUCICA MINODORA
38		Infirmiera			G	1	DOBRA ADINA
39		Infirmiera		debutant	G	1	TAGARTA ELENA
40		Ingrijitoare			G	1	JURCA CRISTINA DANIELA
41		Ingrijitoare			G	1	RENGHEA MARIANA
42		Ingrijitoare			G	1	RESIGA ILEANA
43		Infirmiera			G	1	vacant
44		Infirmiera			G	1	vacant
45		Brancardier			G	1	vacant

SECTIA BOLI INFECTIOASE - 20 POSTURI

Paturi: 25; din care: Sectie 25

1		Medic primar-sef sectie		I	S	1	ONICIUC ANTOANELA DANIELA
2		Medic primar			S	1	DANDESCU MARIA
3		Medic primar			S	1	vacant
4		Asistent medical-sef		principal	PL	1	PETRESC SILVIA
5		Asistent medical		principal	PL	1	BERINDEIE MIHAELA
6		Asistent medical		principal	PL	1	COSTEA IULIANA MIRELA
7		Asistent medical		principal	PL	1	CRISAN ALEXANDRA MIOARA
8		Asistent medical		principal	S	1	LOGOJAN ALINA VIOLETA
9		Asistent medical		principal	S	1	NELEGA SORINA LIGELA
10		Asistent medical		principal	PL	1	SZASZ ILONCA
11		Asistent medical		principal	PL	1	BARASTEAN OLGA
12		Asistent medical		principal	PL	1	vacant
13		Statistician medical		principal	M	1	GLOGOVETEAN MONIKA
14		Infirmiera			G	1	BALEA IRINA
15		Infirmiera			G	1	CHIPERI DORINELA
16		Infirmiera			G	1	LUCANIUC REGHINA
17		Infirmiera			G	1	PINTEA MARIA
18		Infirmiera			G	1	STRATICA VASILICA
19		Infirmiera			G	1	vacant
20		Brancardier			G	1	CANDLER SORIN OVIDIU

SECTIA ONCOLOGIE MEDICALA - 29 POSTURI

Paturi: 30; din care: Sectie 25; Radioterapie 5

1	Medic primar-sef sectie del.		I	S	1	RUGEA TIBERIU VALERIU
2	Medic specialist			S	1	POPA ALINA MAURA
3	Medic specialist			S	1	vacant
4	Medic specialist			S	1	vacant
5	Psiholog		principal	S	1	BOTAS DANIELA
6	Asistent medical-sef		principal	S	1	LAZEA MIOARA AURA
7	Asistent medical		principal	PL	1	GABOR DORINA
8	Asistent medical		principal	PL	1	HERBEI SIMONA RODICA
9	Asistent medical		principal	PL	1	IRIMIE EMILIA MARIA
10	Asistent medical		principal	PL	1	IVAN DANIELA
11	Asistent medical		principal	PL	1	MALAESTEAN IONICA
12	Asistent medical		principal	PL	1	MARTIN LENUITA
13	Asistent medical		principal	PL	1	MORARU LAURA
14	Asistent medical		principal	PL	1	MOTOC FLORINA
15	Asistent medical		principal	SSD	1	MUNTEANU MARIANA ADRIANA
16	Asistent medical		principal	PL	1	SILASI DELIA CARMEN
17	Asistent medical		principal	PL	1	VINCZE MARIA VIORICA
18	Asistent medical			PL	1	CORNEA CONSTANTA GABRIELA
19	Statistician medical		principal	M	1	LAZEA RAUL
20	Asistent medical			PL	1	vacant
21	Infirmiera			G	1	CAZU HOGMAN MONICA ELENA
22	Infirmiera			G	1	CIORTEA GABRIELA
23	Infirmiera			G	1	PLIOT MIHAELA ELENA
24	Infirmiera			G	1	RADU MITA
25	Infirmiera			G	1	SACOTA ANGELICA
26	Infirmiera			G	1	SORTAN TRAIAN
27	Infirmiera			G	1	TEAMPAU ELENA
28	Ingrijitoare			G	1	ILUTA EUGENIA GEORGETA
29	Brancardier			G	1	CHEREGI IOAN DANIEL

SECTIA NEUROLOGIE - 36 POSTURI

Paturi: 45; din care: Sectie 45

1	Medic primar-sef sectie		II	S	1	MIHU ANCA
2	Medic primar			S	1	BERTALAN LAVINIA
3	Medic primar			S	1	RUSAN ELENA
4	Medic primar			S	1	SAMOILESCU LUCICA
5	Medic primar			S	1	TANU ELENA GABRIELA
6	Medic specialist			S	1	vacant
7	Kinetoterapeut principal			S	1	OPREAN ILDICO
8	Asistent medical-sef		principal	PL	1	CHIFOR DANIELA
9	Asistent medical		principal	PL	1	ANGHELINA GEORGIANA MANUELA
10	Asistent medical		principal	PL	1	BODAC VIORICA AURICA
11	Asistent medical		principal	PL	1	CORNE GABRIELA

12		Asistent medical	principal	PL	1	DRAGOMIR ADINA CLAUDIA
13		Asistent medical	principal	PL	1	MAGDA IRINA MARIA
14		Asistent medical	principal	PL	1	MAGDA MARANATA
15		Asistent medical	principal	PL	1	NEGREA ADRIANA ROXANA
16		Asistent medical	principal	PL	1	SATALAN ELENA CRISTINA
17		Asistent medical	principal	PL	1	SIRB MIHAELA DANIELA
18		Asistent medical	principal	S	1	SOCACI CLAUDIA DANIELA
19		Asistent medical		PL	1	BOANCA EMILIA-ALINA
20		Asistent medical		PL	1	PASCU ELISABETA ALINA
21		Asistent medical		PL	1	SIMINA LUMINITA MIHAELA
22		Asistent medical	principal	PL	1	vacant
23		Statistician medical	principal	M	1	MOISE ANISOARA
24		Infirmiera		G	1	ANTON MARIA
25		Infirmiera		G	1	DARADICS ELVIRA
26		Infirmier		G	1	DARADICS IULIU
27		Infirmiera		G	1	JELER SORINA
28		Infirmiera		G	1	JUDE CORINA
29		Infirmiera		G	1	NICOARA DANIELA
30		Infirmiera		G	1	POPA TATIANA
31		Infirmiera		G	1	SOIMAREANU CLAUDIA
32		Infirmiera		G	1	VADEAN RODICA
33		Brancardier		G	1	DODA MARIUS CRISTINEL
34		Brancardier		G	1	LAZAR DANUT
35		Infirmiera		G	1	vacant
36		Infirmiera		G	1	vacant

SECTIA PSIHIATRIE - 25 POSTURI

Patuti: 30; din care: Sectie 30

1		Medic primar-sef sectie	I	S	1	CORDEA TRAIAN
2		Medic primar		S	1	OIEGAR MONICA VENUSA
3		Medic primar		S	1	STANCI LUIGYA CLAUDIA
4		Medic specialist		S	1	vacant
5		Psiholog principal		S	1	FLOREA CLAUDIA SIMONA
6		Psiholog principal		S	1	GRAUR ADRIANA
7		Asistent medical-sef	principal	S	1	LOEA ELENA NICOLETA
8		Asistent medical	principal	PL	1	COSMA LIDIA
9		Asistent medical	principal	PL	1	DRAGHICI NADIA MIHAELA
10		Asistent medical	principal	S	1	FILCU MIRELA VIOLETA
11		Asistent medical	principal	PL	1	GAT VOICHTA CONSUELA
12		Asistent medical	principal	S	1	GAVRILA LAURENTIA
13		Asistent medical	principal	PL	1	KORB LUCIANA MELANIA
14		Asistent medical	principal	SSD	1	MEGYERI MIHAELA
15		Asistent medical	principal	PL	1	TERTECIADINA

16		Statistician medical		M	1	PACURAR ANA NICOLETA
17		Asistent medical	principal	S	1	vacant
18		Asistent medical	principal	S	1	vacant
19		Asistent medical		PL	1	vacant
20		Infirmiera		G	1	BUDOIU-OANCEA ANAMARIA
21		Infirmiera		G	1	CAPATINA MARINELA FLORINA
22		Infirmiera		G	1	CIMPEAN STEFANICA
23		Infirmiera		G	1	CORNEA DOINITA
24		Infirmiera		G	1	VARADI COSMINA
25		Infirmiera		G	1	vacant

SECTIA PEDIATRIE - 55 POSTURI

Paturi: 45; din care: Sectie 30; Terapie Acuta 5; Comp.Cardiologie 5; Comp.Neurologie Pediatrica 5

1	Medic primar-sef sectie		II	S	1	PAUL MIHAELA
2	Medic primar			S	1	BAICEANU ADRIANA
3	Medic primar			S	1	BALEA IOANA MADALINA
4	Medic primar			S	1	OLTEAN SIMONA
5	Medic primar			S	1	POP LUMINITA
6	Medic primar			S	1	ROMAN EVA LAURA
7	Medic primar			S	1	SAVU MARIA
8	Medic specialist			S	1	JEFLEA DANIELA
9	Medic primar			S	1	vacant
10	Medic primar			S	1	vacant
11	Asistent social			S	1	vacant
12	Asistent medical-sef		principal	S	1	NAGY RENATA
13	Asistent medical		principal	PL	1	ANDRONIC LILIANA
14	Asistent medical		principal	PL	1	BARA ILDIKO
15	Asistent medical		principal	PL	1	CHODARU DIANA GABRIELA
16	Asistent medical		principal	PL	1	FILIP ADINA
17	Asistent medical		principal	PL	1	GORCEA ELENA DANIELA
18	Asistent medical		principal	PL	1	GYENGE ILDIKO
19	Asistent medical		principal	S	1	JOSEPH SARA
20	Asistent medical		principal	PL	1	MIRAUTA GABRIELA
21	Asistent medical		principal	PL	1	NICOLESCU IOANA
22	Asistent medical		principal	S	1	PAPP IUDIT RITA
23	Asistent medical		principal	PL	1	PARPALEA IOANA MIRELA
24	Asistent medical		principal	PL	1	PATRICHE ELENA LAVINIA
25	Asistent medical		principal	S	1	PLETER MARIA ELENA
26	Asistent medical		principal	S	1	RADUICA DANIELA
27	Asistent medical		principal	PL	1	SLABU DORINA FELICIA
28	Asistent medical		principal	PL	1	STEF ADRIANA
29	Asistent medical		principal	PL	1	STOICA MELANIA
30	Asistent medical		principal	PL	1	URS AURELIA
31	Asistent medical		principal	PL	1	VLADU MARIA
32	Asistent medical			PL	1	BENTEU CRISTINA
33	Asistent medical			PL	1	CIOCAN MARIOARA

34		Asistent medical			S	1	MARIAN CORNELIA ELENA
35		Asistent medical			PL	1	MOGA ELENA RUXANDRA
36		Asistent medical			PL	1	SANDOR ALEXANDRA ELENA
37		Statistician medical			M	1	DEMIAN RAZVAN OVIDIU
38		Asistent medical		principal	PL	1	vacant
39		Asistent medical			PL	1	vacant
40		Infirmiera			G	1	ALBA CAMELIA VIOLETA
41		Infirmiera			G	1	DUMITRIU CRISTINA
42		Infirmiera			G	1	GHERMAN MARGHETI
43		Infirmiera			G	1	GULEAS ROZALIA
44		Infirmiera			G	1	MASNITA MARINICA
45		Infirmiera			G	1	NISTOR PANSELA
46		Infirmiera			G	1	PIRVA ELENA
47		Infirmiera			G	1	RADU DOINA MARINICA
48		Infirmiera			G	1	VIERU LILIANA
49		Ingrijitoare			G	1	CACEU EDIT
50		Ingrijitoare			G	1	DAMIAN GEORGETA
51		Ingrijitoare			G	1	PETERLECEAN ANA MARIA
52		Ingrijitoare			G	1	VLAD IONELA
53		Infirmiera			G	1	vacant
54		Infirmiera			G	1	vacant
55		Infirmiera			G	1	vacant

COMPARTIMENT DERMATOVENEROLOGIE - 21 POSTURI

Paturi: 20; din care: Compartiment 20

1		Medic primar			S	1	FOLEA MIRELA FLORINA
2		Medic primar			S	1	SELAR ADINA ZENaida
3		Medic primar			S	1	STEFAN DUMITRA
4		Medic primar			S	1	STOICA CARMEN
5		Medic specialist			S	1	vacant
6		Asistent medical		principal	PL	1	BUBOIU MARIA
7		Asistent medical		principal	PL	1	FULEP VOICHITA
8		Asistent medical		principal	PL	1	LUPU ILEANA
9		Asistent medical		principal	PL	1	MARGAU MIRELA NELICA
10		Asistent medical		principal	PL	1	NICOARA SIMONA-IONELA
11		Asistent medical		principal	PL	1	POPESCU MIRELA MARIANA
12		Asistent medical		principal	PL	1	RESIGA LILIANA
13		Asistent medical		principal	PL	1	PARVANESCU ADELINA
14		Statistician medical		principal	M	1	PACURAR FLORIN
15		Asistent medical		principal	PL	1	vacant
16		Asistent medical		principal	PL	1	vacant
17		Infirmiera			G	1	DOLCESCU CAMELIA
18		Infirmiera			G	1	MARICIUC SILVICA
19		Infirmiera			G	1	VAIDEANU FLORICA
20		Infirmiera			G	1	vacant
21		Ingrijitoare			G	1	vacant

SECTIA RECUPERARE, MEDICINA FIZICA SI BALNEOLOGIE - 23 POSTURI

Patuti: 50; din care: Sectie 50

1	Medic primar-sef sectie	II	S	BICA IOAN
2	Medic primar		S	CIORTEA GABRIELA
3	Medic primar		S	vacant
4	Medic specialist		S	vacant
5	Kinetoterapeut		S	vacant
6	Asistent medical-sef	principal	PL	COTIGA CLAUDIA STEFANIA
7	Asistent medical	principal	PL	ANCUTESCU VLASIE CRISTINA
8	Asistent medical	principal	PL	BORDEIANU ELENA CORINA
9	Asistent medical	principal	PL	BRABETE FELICIA
10	Asistent medical	principal	PL	DAMIAN IULIANA CARMEN
11	Asistent medical	principal	PL	GHERGHELY ROZSI GYONGY
12	Asistent medical	principal	PL	KATO FLORICA
13	Asistent medical	principal	PL	POPA ADINA LIVIA
14	Asistent medical	principal	PL	SUBA CARMEN
15	Asistent medical	principal	PL	VLAD EUGENIA
16	Asistent medical		S	FILIMON MARIANA ELENA
17	Statistician medical	principal	M	DUMITRESCU CARMEN DANIELA
18	Asistent medical		PL	vacant
19	Infirmiera		G	BOGDAN COSMINA MARCELA
20	Infirmiera		G	FILIP ELENA
21	Infirmiera		G	MEDREA MIHAELA ADRIANA
22	Infirmiera		G	TAPUC MARIA
23	Infirmiera		G	vacant

COMPARTIMENT REUMATOLOGIE - 14 POSTURI

Patuti: 15; din care: Compartiment 15

1	Medic primar		S	1 MICLAUS RADU
2	Medic primar		S	1 VELCHEREAN NICOLA MIHAELA
3	Asistent medical	principal	PL	1 ABRUDEAN DORINA
4	Asistent medical	principal	PL	1 JIC MIHAELA
5	Asistent medical	principal	PL	1 RACEU MARIA
6	Asistent medical		PL	1 GLAVU ANGELICA DANIELA
7	Asistent medical		PL	1 VOLLONCS ADRIANA CRINELA
8	Asistent medical	principal	PL	1 vacant
9	Statistician medical		M	1 vacant
10	Infirmiera		G	1 ANCA ELENA
11	Infirmiera		G	1 BOB LIVIA
12	Infirmiera		G	1 MOGA VIOLETA-MARGARETA
13	Infirmiera		G	1 vacant
14	Infirmiera		G	1 vacant

LABORATOR RECUPERARE, MEDICINA FIZICA SI BALNEOLOGIE - 26 POSTURI

1	Medic primar-coordonator.		5	S	1	BUCSA BENIAMIN
2	Kinetoterapeut			S	1	BUCULESCU ALIN
3	Kinetoterapeut			S	1	GURA CRISTIAN
4	Kinetoterapeut			S	1	IGNA FLORINA NICOLETA
5	Kinetoterapeut			S	1	MARCUS DANIEL
6	Kinetoterapeut			S	1	OLARIU DUDAS DIANA IONELA
7	Kinetoterapeut			S	1	ZOICA CRISTINA MARIA
8	Asistent medical-sef		principal	PL	1	BOCIT GHEORGHE
9	Asistent medical		principal	PL	1	BLANARU CARMELA
10	Asistent medical		principal	PL	1	COSTEA VOICHTA
11	Asistent medical		principal	PL	1	MUSTE CARMEN
12	Asistent medical		principal	PL	1	STOICA GABRIELA
13	Asistent medical		principal	PL	1	VAJDA MIHAELA MEDINA
14	Asistent medical		principal	PL	1	WEBER MARCELA LUCIA
15	Oficiant medical			M	1	DASCALITA PETRE
16	Asistent medical		principal	PL	1	vacant
17	Asistent medical		principal	PL	1	vacant
18	Asistent medical		principal	PL	1	vacant
19	Asistent medical			PL	1	vacant
20	Bales			G	1	GASPAR LUCIA
21	Bales			G	1	MARICA SORINA
22	Bales			G	1	MATEI MARIANA
23	Bales			G	1	MUSTEA NELA FELICIA
24	Bales			G	1	PUTAN ANA
25	Ingrijitoare			G	1	vacant
26	Ingrijitoare			G	1	vacant

SECTIA PNEUMOLOGIE - 39 POSTURI

Patuti: 70; din care: Sectie 50; Compartiment T.B.C. 8

1	Medic primar-sef sectie		II	S	1	NEAGU MARIA ELENA
2	Medic primar			S	1	BULUGEAN LUCIA
3	Medic primar			S	1	DODA CAMELIA
4	Medic primar			S	1	PETRU IOAN DORIN
5	Medic primar			S	1	PISEL NICOLAE ALEXANDRU
6	Medic specialist			S	1	BUDARESCU MARIA CRISTINA
7	Medic primar			S	1	vacant
8	Medic specialist			S	1	vacant
9	Asistent medical-sef		principal	PL	1	URECHE BIANCA IOSEFINA
10	Asistent medical		principal	PL	1	CURETEU IRINA ANISOARA
11	Asistent medical		principal	PL	1	IOVAN FELICIA AURELIA

12		Asistent medical	principal	PL	1	JUDE LIANA GABRIELA
13		Asistent medical	principal	PL	1	JURJ RODICA
14		Asistent medical	principal	S	1	PALALAU AURORA GRATIELA
15		Asistent medical	principal	PL	1	PANDREA DANIELA FLOARE
16		Asistent medical	principal	PL	1	PARAU ELENA
17		Asistent medical	principal	PL	1	TODEREAN ANETA
18		Asistent medical	principal	PL	1	VASS FLORINELA
19		Asistent medical		PL	1	FILIMON DORINA ELENA
20		Statistician medical	principal	M	1	ACHIM VICTORITA
21		Asistent medical	principal	PL	1	vacant
22		Asistent medical	principal	PL	1	vacant
23		Asistent medical	principal	PL	1	vacant
24		Asistent medical	principal	PL	1	vacant
25		Asistent medical	principal	PL	1	vacant
26		Asistent medical	principal	S	1	vacant
27		Asistent medical		PL	1	vacant
28		Asistent medical		PL	1	vacant
29		Asistent medical		PL	1	vacant
29		Infirmiera		G	1	FLUERAS NICULINA
30		Infirmiera		G	1	GROZA LUCIA
31		Infirmiera		G	1	MUNTEANU FLORICA
32		Infirmiera		G	1	NEAG RODICA
33		Infirmiera		G	1	NICULA MARIA DORINA
34		Infirmiera		G	1	OLAR LAURA
35		Infirmiera		G	1	RACILA ELENA
36		Infirmiera		G	1	GABAR ANA
37		Infirmiera		G	1	vacant
38		Ingrjiitoare		G	1	vacant
39		Ingrjiitoare		G	1	vacant

CENTRUL DE HEMODIALIZA - 27 POSTURI

Aparate: 9

1	Medic primar-sef sectie		I	S	1	PALAMAR MARCEL
2		Medic specialist		S	1	GREC MARIUS DORIN
3		Inginer	I	S	1	COJOCARU HORIA
4		Psiholog specialist		S	1	BURLACU ANA MARIA
5		Tehnician	principal	M	1	CIAPOS SILVIU ADRIAN
6		Inginer	I	S	1	vacant
7		Asistent medical-sef	principal	PL	1	FAUR MIRELA VALENTINA
8		Asistent medical	principal	PL	1	AVRAM DANA DUMITRA
9		Asistent medical	principal	PL	1	CHERECHES HAINAL
10		Asistent medical	principal	PL	1	CIRES MONICA
11		Asistent medical	principal	PL	1	PELLE LIDIA
12		Asistent medical	principal	PL	1	SILASI CRISTINA

13		Asistent medical		principal	PL	1	STOICA GABRIELA
14		Asistent medical		principal	S	1	URSALES ELENA RAMONA
15		Statistician medical			M	1	BARNA ANDEEA
16		Asistent medical			PL	1	vacant
17		Asistent medical			PL	1	vacant
18		Asistent medical			PL	1	vacant
19		Asistent medical			PL	1	vacant
20		Asistent medical			PL	1	vacant
21		Infirmiera			G	1	BERA CRISTINA CORNELIA
22		Infirmiera			G	1	PETROVICI ANGELICA LUCIA
23		Infirmiera			G	1	SCUIPICI ANTOANELA
24		Infirmiera			G	1	SINA DANIELA
25		Infirmiera			G	1	ZGARDEA ELENA
26		Ingrijitoare			G	1	SEBESTYEN ADRIANA
27		Ingrijitoare			G	1	vacant

FARMACIA SPITAL - 24 POSTURI

1	Farmacist primar-farmacist sef			II	S	1	AVRAM SIMONA
2	Farmacist primar				S	1	ALMASAN SMARANDA
3	Farmacist primar				S	1	vacant
4	Farmacist primar				S	1	vacant
5	Asistent medical			principal	PL	1	CRISAN LACRIMIOARA MINERVA
6	Asistent medical			principal	PL	1	FEIER LARISA
7	Asistent medical			principal	PL	1	FERA MARIOARA
8	Asistent medical			principal	PL	1	LAVU VIORICA
9	Asistent medical			principal	PL	1	MAGDA ANA MONICA
10	Asistent medical			principal	PL	1	PETRUT SIMONA
11	Asistent medical			principal	PL	1	PITULICE MIRELA
12	Asistent medical			principal	PL	1	TODERICIU DANIELA
13	Asistent medical			principal	PL	1	ZIRNEA EMILIA
14	Operator, controlor date			I	M	1	JULA FLORICA
15	Operator, controlor date			I	M	1	LAZAR FLORICA I.
16	Operator, controlor date			I	M	1	SAMI MARIA
17	Asistent medical			principal	PL	1	vacant
18	Asistent medical			principal	PL	1	vacant
19	Asistent medical			principal	PL	1	vacant
20	Asistent medical			PL	PL	1	vacant
21	Asistent medical			PL	PL	1	vacant
22	Asistent medical			SSD	SSD	1	vacant
23	Ingrijitoare			G	G	1	ILIES MARIA
24	Ingrijitoare			G	G	1	POPA FLORICA

LABORATOR DE ANALIZE MEDICALE - 35 POSTURI

1	Medic primar-sef laborator		II	S	1	STOIAN MARIA MIHAELA
2	Medic primar			S	1	SOCACIU CARMEN VIOLETA
3	Medic primar			S	1	VINTILA LETITIA
4	Medic specialist			S	1	CUSNIRIUC MARIA
5	Medic specialist			S	1	vacant
6	Biochimist specialist			S	1	CIORNEA SIMONA
7	Chimist principal			S	1	vacant
8	Biolog principal			S	1	BOANTA CORINA
9	Biolog principal			S	1	TOMA MIHAELA
10	Farmacist specialist			S	1	POPA ANCA
11	Biochimist		principal	S	1	PISOIU IACOB LILIANA
12	Asistent medical-sef		principal	PL	1	MESLOSAN SIMINA MARIA
13	Asistent medical		principal	PL	1	BOJIN NICULINA
14	Asistent medical		principal	PL	1	BOLDOR LIANA ANGELICA
15	Asistent medical		principal	PL	1	FARCAS MIHAELA TAMARA
16	Asistent medical		principal	PL	1	FURTUNA DORINA
17	Asistent medical		principal	PL	1	GHIURA DANIELA MARIANA
18	Asistent medical		principal	PL	1	GOLEA GHEORGHITA
19	Asistent medical		principal	PL	1	JULA ADINA FELICIA
20	Asistent medical		principal	S	1	MOISA EUGENIA-CARMEN
21	Asistent medical		principal	PL	1	MOISE ELENA
22	Asistent medical		principal	PL	1	POP AURELIA
23	Asistent medical		principal	PL	1	SERBESC ELENA
24	Asistent medical		principal	PL	1	SILAGHI GANEA GABRIELA
25	Asistent medical			PL	1	ANCA IULIANA MARIA VERONICA
26	Asistent medical			PL	1	FURTUNA OTILIA MIHAELA
27	Asistent medical			PL	1	GRIGORE ALINA CONSTANTINA
28	Statistician medical		M		1	COPACI MARIANA
29	Ingrijitoare		G		1	PANTA MARIA
30	Ingrijitoare		G		1	SEREA LILIANA
31	Ingrijitoare		G		1	vacant

PUNCT DE LUCRU TBC - 4 POSTURI

32	Medic primar			S	1	vacant temporar
33	Asistent medical		principal	PL	1	FAUR DELIA
34	Asistent medical		principal	PL	1	SUTEU DORINA MARIANA
35	Ingrijitoare		G		1	MIEILA MIRELA MARIANA

LABORATOR RADIOLOGIE SI IMAGISTICA MEDICALA - 41 POSTURI]

1	Medic primar-sef laborator del.		II	S	1	MUNTEAN MINAI RODICA MARIANA
2	Medic primar			S	1	FLOREA DAN CALIN
3	Medic primar			S	1	VERES IOAN LUDOVIC
4	Medic specialist			S	1	PAVEL RADU
5	Medic primar			S	1	vacant temporar
6	Medic primar			S	1	vacant
7	Medic primar			S	1	vacant
8	Medic primar			S	1	vacant
9	Fizician medical			S	1	vacant
10	Asistent medical-sef		principal	PL	1	NELEGA GABRIELA LOREDANA
11	Asistent medical		principal	PL	1	BADEA V.ADRIANA
12	Asistent medical		principal	PL	1	BANCHES IOANA DANIELA
13	Asistent medical		principal	PL	1	CALEAN MIHAELA
14	Asistent medical		principal	PL	1	COSTACHE GABRIELA
15	Asistent medical		principal	PL	1	DOMINTE MARINA SVETLANA
16	Asistent medical		principal	PL	1	MATIES MARINELA
17	Asistent medical		principal	PL	1	PETRUT MARIA
18	Asistent medical		principal	PL	1	SANDU CLAUDIA FLORINA
19	Asistent medical		principal	PL	1	STANCIU BIANCA VANINA
20	Asistent medical			PL	1	FRUNZA LOREDANA PAULA
21	Asistent medical			PL	1	HANDRACHI-STEF LUCIAN
22	Asistent medical			PL	1	HOTEA CALIN
23	Asistent medical			M	1	KAST MIHAELA
24	Asistent medical			PL	1	IAN ELENA NICOLETA
25	Asistent medical			PL	1	PARDOS MARIOARA DORINA
26	Asistent medical			PL	1	STAN MIHAELA CRISTINA
27	Asistent medical			PL	1	RAHOVEAN EMILIA VIORICA
28	Asistent medical		principal	PL	1	vacant
29	Asistent medical		principal	PL	1	vacant
30	Asistent medical		principal	PL	1	vacant
31	Asistent medical		principal	PL	1	vacant
32	Asistent medical		principal	PL	1	vacant
33	Asistent medical			PL	1	vacant
34	Asistent medical			PL	1	vacant
35	Registrator medical		principal	M	1	CSIKI ELENA
36	Registrator medical		principal	M	1	FARGAS CLAUDIA CORNELIA
37	Registrator medical			M	1	SELAR IOAN DANIEL
38	Registrator medical			M	1	MUNTEAN-MINAI SMARANDA
39	Ingrjitoare			G	1	IOVAN FLORICA
40	Ingrjitoare			G	1	NICOARA-STOICA AURELIA RODICA
41	Ingrjitoare			G	1	vacant

LABORATOR MEDICINA NUCLEARA - 9 POSTURI

1	Medic specialist-sef lab.deI.		I	S	1	MUTIU FLORIN
2	Chimist specialist			S	1	STOICESCU TATIANA
3	Fizician medical			S	1	PODELEAN CARMEN RAMONA
4	Asistent medical-sef		principal	PL	1	INVERSIN RODICA
5	Asistent medical		principal	PL	1	DEMEAN DORINELA -COSMINA
6	Asistent medical		principal	PL	1	OANCEA DANIELA
7	Asistent medical		principal	PL	1	ONCOS VALERIA LEONTINA
8	Asistent medical		principal	PL	1	vacant
9	Ingrjiitoare			G	1	IANC DORINA

SERVICIUL DE ANATOMIE PATOLOGICA - 12 POSTURI

1	Medic specialist-sef serviciu		I	S	1	vacant
2	Medic primar			S	1	BOTESCU ADRIAN GABRIEL
3	Biolog principal			S	1	vacant
4	Asistent medical		principal	PL	1	ADAM MARILENA COSMINA
5	Asistent medical		principal	PL	1	BERBECEANU MONICA LUCIANA
6	Asistent medical		principal	PL	1	JELER DANIELA
7	Asistent medical		principal	PL	1	LAZA MARIA MONICA
8	Asistent medical			PL	1	BOTESCU ELISABETA
9	Autopsier			M	1	ADAM REMUS NICOLAE
10	Autopsier			M	1	NUTU DORU
11	Registrator medical			M	1	MATEI DANIELA
12	Ingrjiitoare			G	1	NOVAC VIORICA

CABINET ONCOLOGIE MEDICALA - 5 POSTURI

1	Medic primar			S	1	vacant temporar
2	Medic specialist			S	1	vacant
3	Asistent medical			PL	1	CHIRIAC ANNEMARIE LUCIA
4	Asistent medical			PL	1	GALEA DOINA CRINA
5	Statistician medical		principal	M	1	DANCIU CARMEN ELENA

CABINET DIABET ZAHARAT, BOLI DE NUTRITIE SI METABOLISM - 5.5 POSTURI

1	Medic primar			S	1	FOTESCU NICOLETA CODRUTA
2	Medic specialist			S	1	DOMNITEANU GAROFITA
3	Medic primar			S	0,5	vacant
4	Asistent medical		principal	PL	1	FECHETE MARIANA
5	Asistent medical		principal	PL	1	GRUIA ELISABETA
6	Asistent medical		principal	PL	1	TORNEA EUGENIA

UNITATEA DE PRIMIRE URGENTE UPU-SMURD cu punct de lucru in loc.DEVA,ILIA,CALAN si Cab.medicina dentara urgenta - 77 POSTURI

1	Medic primar-sef sectie	II	S	1	POPA TANASE
2	Medic primar		S	1	DUTULESCU LIONEL CIPRIAN
3	Medic primar		S	1	MOGA LUCIA
4	Medic primar		S	1	NICOLA NADINA
5	Medic primar		S	1	STOICA ELENA ANCA
6	Medic primar		S	1	VETEAN MUNTEAN MIRCEA
7	Medic specialist		S	1	GHERMAN MIHAELA LAURA
8	Medic specialist		S	1	
9	Medic specialist		S	1	MIHAESCU MARIA CORINA
10	Medic specialist		S	1	STOICA MARIȘ EMIL-detașat la SJU Deva
11	Medic primar		S	1	vacant
12	Medic specialist		S	1	vacant
13	Medic specialist		S	1	vacant
14	Medic specialist		S	1	vacant
15	Asistent social	principal	S	1	PAVEL ADINA-FLORINA
16	Asistent medical-sef	principal	S	1	POP VASILICA
17	Asistent medical	principal	S	1	ADESPEI LILIANA
18	Asistent medical	principal	PL	1	BUDA MIRELA
19	Asistent medical	principal	PL	1	CEAPA IOANA CRISTINA
20	Asistent medical	principal	PL	1	CURE LAURA MIRELA
21	Asistent medical	principal	PL	1	DIOANE NICULINA MARIA
22	Asistent medical	principal	M	1	DRAICA ILEANA
23	Asistent medical	principal	PL	1	DROBOT VIVIANA
24	Asistent medical	principal	PL	1	GHERMAN VAL-MIHAELA
25	Asistent medical	principal	PL	1	GREBENISAN CRISTINA
26	Asistent medical	principal	PL	1	LACZKO-LOGOJAN MIHAELA
27	Asistent medical	principal	PL	1	LOGOJAN DORIN
28	Asistent medical	principal	PL	1	MANOLESCU ELENA ALINA
29	Asistent medical	principal	PL	1	MARGINEAN COSMINA ELENA
30	Asistent medical	principal	PL	1	NAGY LUMINITA SORINA
31	Asistent medical	principal	PL	1	NEAGU EUGENIA
32	Asistent medical	principal	PL	1	OPROIU ALINA MIHAELA
33	Asistent medical	principal	PL	1	PENA CECILIA CERASELA
34	Asistent medical	principal	PL	1	PETREAN FLORINELA LACRAMIOARA
35	Asistent medical	principal	S	1	PIPOS MIHAELA VIORICA
36	Asistent medical	principal	S	1	PREDA ADINA EMANUELA
37	Asistent medical	principal	PL	1	RUSU COSMINA LAURA
38	Asistent medical	principal	PL	1	UNGUR RAMONA LIVIA
39	Asistent medical	principal	PL	1	VARADI CLAUDIA LILIANA

40		Asistent medical		principal	PL	1 ZDETOVETCHI DAN CRISTIAN
41		Asistent medical			PL	1 BARBURA ELENA-CRISTINA
42		Asistent medical			PL	1 CRACIUN ANAMARIA
43		Asistent medical			PL	1 DITA DANIELA
44		Asistent medical			PL	1 GRAMA CAMELIA LACRAMICARA
45		Asistent medical			PL	1 SELAR ADRIAN
46		Sora medicala		principal	M	1 URS IOANA
47		Asistent medical			PL	1 BĂRĂȘTEAN OLGA
48		Asistent medical		debutant	PL	1 MURAR ION MARIUS
49		Asistent medical		debutant	PL	1 PÎRVONI LARISA BERNADETT
50		Asistent medical		debutant	PL	1 SUCIU ANCA CRINA
51		Operator, controlor date		I	M	1 BUREANA ANA MARIA
52		Operator, controlor date		I	M	1 NICHITELEA MARINELA
53		Operator, controlor date		I	M	1 TRIF LOREDANA IRINA
54		Operator, controlor date		I	M	1 VINTILA ALINA MIHAELA
55		Operator, controlor date		II	M	1 MUNTEAN ANCA MARIA
56		Infirmiera			G	1 BORCA SALOMIA
57		Infirmiera			G	1 CIORPAC MARIA
58		Infirmiera			G	1 DANC DANIELA
59		Infirmiera			G	1 IDITA CORNELIA
60		Infirmiera			G	1 IGRET MONICA LILIOARA
61		Infirmiera			G	1 PETRICA IULIANA CARMEN
62		Brancardier			G	1 ABRUDEAN MIHAI DORIN
63		Brancardier			G	1 COTOI IOAN
64		Brancardier			G	1 FAUR LUCIAN MARIN
65		Brancardier			G	1 GLIGOR CONSTANTIN
66		Brancardier			G	1 MOGA NICOLAE
67		Brancardier			G	1 MOLDOVAN MILIONOR OVIDIU
68		Brancardier			G	1 MUNTEAN RAUL COSMIN
69		Brancardier			G	1 RATA GHEORGHITA
70		Brancardier			G	1 TRIFOI DUMITRU VALENTIN
71		Ingrijitoare			G	1 ALB SINZIANA
72		Ingrijitoare			G	1 BALAJ ELISABETA
73		Ingrijitoare			G	1 DANESCU ADRIANA
74		Ingrijitoare			G	1 PEICA MONICA ELENA
75		Ingrijitoare			G	1 STIOPA LIGIA DACIANA
76		Infirmiera			G	1 FAUR DORINA CRISTINA
77		Brancardier			G	1 ȘOANCA SORIN DAVID

UPU SMURD ILIA - 13 POSTURI

1		Medic specialist		S	1	DAN MONICA SONIA
2		Medic specialist		S	1	PERJU CATALIN CONSTANTIN
3		Medic		S	1	BUGNAR GABRIELA MONICA
4		Asistent medical	principal	PL	1	HAN MIHAELA
5		Asistent medical	principal	PL	1	HANAS LILIANA
6		Asistent medical	principal	PL	1	ORBONAS ILDIKO
7		Asistent medical	principal	PL	1	SARARU GABRIELA DELIA
8		Sora medicala	principal	M	1	BOGDANEL MARIA
9		Sora medicala	principal	M	1	CACEU ANGELICA
10		Ingrijitoare		G	1	BOCIOACA EUGENIA
11		Ingrijitoare		G	1	BORDEA MARIA
12		Ingrijitoare		G	1	JOSAN DOMNICA
13		Ingrijitoare		G	1	LUCA ANA LENUTA

UPU SMURD CALAN - 11 POSTURI

1		Medic specialist		S	1	vacant
2		Medic specialist		S	1	vacant
3		Asistent medical		PL	1	GRECU TIBERICA
4		Asistent medical		PL	1	POPA FELICIA RODICA
5		Asistent medical		PL	1	GAVRILĂ MARIUS DANIEL
6		Asistent medical		PL	1	UNGUR ADINA FLORINA
7		Asistent medical	debutant	PL	1	CONDORACHI CRISTINA IOANA
8		Ingrijitoare		G	1	CIUCA EUGENIA
9		Ingrijitoare		G	1	PĂDUREAN ELENA
10		Ingrijitoare		G	1	vacant
11		Ingrijitoare		G	1	vacant

CABINET MEDICINA DENTARA URGENTA - 9 POSTURI

1		Medic		S	1	IDITA IOANA ALEXANDRA
2		Medic		S	1	VANCU NICOLAE NONU
3		Medic		S	1	vacant
4		Medic specialist		S	1	vacant
5		Asistent medical	principal	PL	1	CRISAN LOREDANA SANDRA
6		Asistent medical	principal	PL	1	OLARIU DOINA
7		Asistent medical	principal	PL	1	PINTICAN RAMONA
8		Asistent medical		PL	1	vacant
9		Asistent medical		PL	1	vacant

CABINET BOLI INFECTIOASE - 2 POSTURI

1		Medic primar		S	1	CAMPEANU ELENA
2		Asistent medical	principal	PL	1	MEITA NADIA

CABINET PLANIFICARE FAMILIALA - 6 POSTURI

1	Medic primar		S	1 vacant
2	Medic specialist		S	1 MOCA ILEANA VIORICA
3	Medic specialist		S	1 STEFAN LENUTA
4	Asistent medical	principal	S	1 VLADAN NICOLETA ELVIRA
5	Asistent medical		PL	1 vacant
6	Ingrijitoare		G	1 vacant

DISPENSAR TBC DEVA - 6 POSTURI

1	Medic primar		S	1 SILVESTRU MARIA
2	Asistent medical	principal	PL	1 FOLEA LILIANA
3	Asistent medical	principal	PL	1 TIRBAN VIOLETA
4	Asistent medical	principal	PL	1 vacant
5	Asistent medical		PL	1 vacant
6	Statistician medical		M	1 SUTEU RAMONA-DIANA

SERVICIUL JUDEȚETAN DE MEDICINA LEGALA - 26 POSTURI

1	Medic primar-sef serviciu		II	1 MARCULESCU DAN OCTAVIAN
2	Medic primar		S	1 FOLEA OVIDIU
3	Medic primar		S	1 OIEGAR CLAUDIU
4	Medic primar		S	1 TOZLOVANU DOREL
5	Medic primar		S	1 vacant
6	Medic specialist		S	1 CHIROBAN OVIDIU SORIN
7	Chimist principal		S	1 DEACONU SIMONA AMADA
8	Farmacist primar		S	1 CURETEAN FLORENTINA
9	Farmacist primar		S	1 TRUFAS SIMONA ELENA
10	Inginer	IA	S	1 CINDA MARIANA
11	Referent	II	S	1 CALINESCU MARIA CARMEN
12	Referent	I	S	1 vacant
13	Asistent medical	principal	PL	1 ARESAN SIMONA
14	Asistent medical	principal	PL	1 BORZA MARIOARA
15	Asistent medical	principal	PL	1 BORZA VIRGIL
16	Asistent medical	principal	PL	1 ILCA LUCI
17	Asistent medical	principal	PL	1 IONESCU CRISTIAN
18	Asistent medical	principal	PL	1 IONESCU DANIELA
19	Asistent medical	principal	PL	1 LEONTESCU BALU MIRCEA
20	Autopsier		M	1 LEONTESCU DAVID GABRIEL
21	Autopsier principal	principal	M	1 CALFA CICERONE
22	Registrator medical	principal	M	1 BALOG ELVIRA
23	Registrator medical	principal	M	1 RUS DANA
24	Statistician medical	principal	M	1 MARCULESCU DOINA
25	Ingrijitoare		G	1 CHIRILA ANDREEA STEFANIA
26	Brancardier		G	1 DEMENY IOSIF

CENTRUL DE SANATATE MINTALA ADULTI - 12 POSTURI

Paturi zi: 50; Stationar de zi psihiatrie 50;

1	Medic primar-sef laborator	I	S	1	CETEAN DANIELA
2	Medic specialist		S	1	BEJAN ANDREEA
3	Psiholog principal		S	1	BOTA FLORINA ARABELA
4	Psiholog practicant		S	1	vacant
5	Asistent medical-sef	principal	PL	1	ANGHELUTA ELEONORA MIRELA
6	Asistent medical	principal	PL	1	CHIREA DIANA
7	Asistent medical	principal	PL	1	KORB CARMEN GEORGETA
8	Asistent medical	principal	PL	1	TUDOSE NICOLINA
9	Statistician medical		M	1	LEICA MIHAELA CORNELIA
10	Asistent medical		PL	1	vacant
11	Instructor de educatie	principal	M	1	vacant
12	Ingrjitoare		G	1	RUCAREANU FLORICA

CENTRUL DE SANATATE MINTALA COPII - 18 POSTURI

Paturi zi: 30; Stationar de zi neuropsihiatrie infantila 30;

1	Medic specialist-sef centru	II	S	1	vacant
2	Medic primar		S	1	vacant
3	Medic specialist		S	1	BUTA RODICA AURORA
4	Asistent social	principal	S	1	BEANGA CARMEN MARIA
5	Logoped principal		S	1	COADA MELINDA ROZALIA
6	Kinetoterapeut		S	1	IONICA GEORGIANA
7	Psiholog principal		S	1	ENE GABRIELA MONICA
8	Psiholog principal		S	1	GRAUR IULIA IOANA
9	Asistent medical-sef	principal	S	1	TOTH MARILENA
10	Asistent medical	principal	PL	1	OPREA TIMEA
11	Asistent medical	principal	PL	1	PITU CORINA ALINA
12	Asistent medical	principal	PL	1	vacant
13	Instructor de educatie		M	1	REIS CRISTINA
14	Instructor de educatie		M	1	TODEA OANA ELISABETA
15	Statistician medical	principal	M	1	TUDOSIE ANDY GABRIEL
16	Infirmiera		G	1	ORLEA DORINA
17	Ingrjitoare		G	1	vacant
18	Ingrjitoare		G	1	vacant

AMBULATORIUL INTEGRAT - CABINET ALERGOLOGIE - 2 POSTURI

1	Medic primar		S	1	IGHERGAN ALEXANDRINA
2	Asistent medical		PL	1	OTOIU CARMEN-SILVIA

CABINET DERMATOLOGIE PEDIATRICA - 2 POSTURI

1	Medic primar		S	1	MAGHERU MIHAELA
2	Asistent medical	principal	PL	1	JUDUC CRISTINA

CABINET MEDICINA MUNCII - 1 POST

1	Medic primar		S	1	vacant
---	--------------	--	---	---	--------

CABINET AUDIOLOGIE - 1 POST

1	Asistent medical	principal	PL	1	vacant
---	------------------	-----------	----	---	--------

CABINET NEUROLOGIE - 1 POST

1	Asistent medical	principal	PL	1	CAZAN CAMELIA
---	------------------	-----------	----	---	---------------

LABORATOR EXPLORARI FUNCTIONALE PNEUMOLOGIE - 1 POST

1	Asistent medical	principal	PL	1	PETRUJ MARIANA
---	------------------	-----------	----	---	----------------

AMBULATORIUL DE SPECIALITATE PENTRU SPORTIVI - CABINET MEDICINA SPORTIVA - 3 POSTURI

1	Medic specialist		S	1	vacant
2	Asistent medical	principal	PL	1	vacant
3	Asistent medical		PL	1	vacant

CABINET MEDICINA SPORTIVA - LOT OLIMPIC DE GIMNASTICA SI GRUP SCOLAR SPORTIV - 5 POSTURI

1	Medic specialist		S	1	OLTEAN SANDA
2	Asistent medical	principal	PL	1	BLAGA ELENA GIULIANA
3	Asistent medical	principal	PL	1	STANESCU LAVINIA
4	Asistent medical	principal	PL	1	VINERAN ADRIANA
5	Asistent medical	principal	M	1	vacant

CABINET RECUPERARE MEDICINA FIZICA SI BALNEOLOGIE-LOT OLIMPIC DE GIMNASTICA SI GRUP SCOLAR SPORTIV - 1 POST

1	Asistent medical	principal	PL	1	GERGELY ENIKO
---	------------------	-----------	----	---	---------------

CABINET PSIHOLOGIC LOT OLIMPIC SI GRUP SCOLAR SPORTIV - 1 POST

1	Psiholog practicant		S	1	vacant
---	---------------------	--	---	---	--------

CABINET STOMATOLOGIC LOT OLIMPIC SI GRUP SCOLAR SPORTIV - 1 POST

1	Medic		S	1	SORCA BOGDAN
---	-------	--	---	---	--------------

MEDICI REZIDENTI - 30 POSTURI

1	Medic rezident an I		S	1	BLAJ PATRICIA
2	Medic rezident an I		S	1	SACEANU OANA MARIA
3	Medic rezident an I		S	1	MARIAN ANAMARIA ADRIANA
4	Medic rezident an I		S	1	GHERASIM IOAN TUDOR
5	Medic rezident an I		S	1	POP DENISA MARIA
6	Medic rezident an I		S	1	SOOS ELENA ANDRA
7	Medic rezident an II		S	1	COLTA ANA MARIA
8	Medic rezident an II		S	1	IORDACHE LORENA
9	Medic rezident an III		S	1	ANGELESCU COPTIL ANDREEA
10	Medic rezident an III		S	1	BENTEU DARIUS

11		Medic rezident an III		S	1	BENTEU DIANA
12		Medic rezident an III		S	1	BETEA RAZVAN OLIVIAN
13		Medic rezident an III		S	1	ZAHARIE ANAMARIA
14		Medic rezident an III		S	1	GEORGESCU GEORGE VALENTIN
15		Medic rezident an III		S	1	HOLHOS TALIDA IOANA
16		Medic rezident an III		S	1	MESTEREAGA GEORGE PETRISOR
17		Medic rezident an III		S	1	MUNTEAN MIHAELA LIVIA
18		Medic rezident an III		S	1	PETCA ELVIS SAMUEL
19		Medic rezident an III		S	1	SALEH AHMED
20		Medic rezident an III		S	1	BIGLIGIU TEODORA ADRIANA
21		Medic rezident an III		S	1	vacant
22		Medic rezident an IV		S	1	ARDELEANU ANDREEA GIORGIANA
23		Medic rezident an IV		S	1	CANDEAN ANDREEA MARIA
24		Medic rezident an IV		S	1	VACARIU ANDREI ALEXANDRU
25		Medic rezident an IV		S	1	IACOB TUDOR CRISTIAN
26		Medic rezident an IV		S	1	vacant
27		Medic rezident an V		S	1	BUNEA ANGHIEL LUCIAN
28		Medic rezident an V		S	1	IFTIME VICTOR
29		Medic rezident an V		S	1	MIHUT CARLA EMANUELA
30		Medic rezident an V		S	1	vacant

PROGRAM NATIONAL 3 - 1 POST

1		Economist	II	S	1	vacant
---	--	-----------	----	---	---	--------

SUBPROGRAM PN 6 DIABET - 1 POST

1		Operator, controlor date	I	M	1	vacant
---	--	--------------------------	---	---	---	--------

SUBPROGRAM HIV SIDA - 2 POSTURI

1		Asistent medical	principal	PL	1	MOISE ALINA MARIA
2		Asistent medical	principal	PL	1	PETRASCU MIHAELA MARIANA

CENTRUL DE SANATATE MULTIFUNCTIONAL CALAN - 7 POSTURI

1		Medic primar		S	1	BRANESC NICOLAE GAVRIL
2		Medic specialist		S	1	SAHIU CARMEN MAGDA
3		Kinetoterapeut		S	1	vacant
4		Asistent medical	principal	PL	1	BARBU LIANA GIANINA
5		Asistent medical	principal	PL	1	LASCOIU AURICA
6		Ingrijitoare		G	1	MOLDOVEANU SALVINA
7		Ingrijitoare		G	1	NOVAC ALEXANDRA

SERVICIUL DE PREVENIRE SI CONTROL AL INFECTIILOR NOZOCOMIALE - 8.5 POSTURI

1	Medic specialist-sef serviciu del.		I	S	1	BARABAS EDITH
2	Medic specialist			S	0.5	LEUCA CREMENASIU DIANA
3	Medic specialist			S	0.5	vacant
4	Farmacist primar			S	0.5	vacant
5	Asistent medical		principal	PL	1	BUBOIU SORIN PETRU
6	Asistent medical		principal	PL	1	GOIA RODICA LOREDANA
7	Asistent medical		principal	PL	1	VRACIU NICOLAE
8	Asistent medical			PL	1	VRACIU NICOLAE ANDREI
9	Agent D.D.D.			G	1	BEJGANEANU COSTEL
10	Agent D.D.D.			G	1	CSISZER PETRU ZSOLT

COMPARTIMENT STERILIZARE - 12 POSTURI

1	Asistent medical-sef		principal	PL	1	LUPSAN FLORICA
2	Asistent medical		principal	PL	1	NELEGA ANGELA ELISABETA
3	Asistent medical		principal	PL	1	POPESC LILIANA
4	Asistent medical		principal	PL	1	PUTUCA BIANCA
5	Asistent medical		principal	PL	1	SALA LAVINIA
6	Asistent medical		principal	PL	1	SIMON CAMELIA SANDA
7	Asistent medical		principal	PL	1	TOMA CORINA
8	Asistent medical		principal	PL	1	URZICEANU SANDA
9	Asistent medical			PL	1	TUDOR PETRUTA CORINA
10	Asistent medical			PL	1	vacant
11	Ingrijitoare			G	1	STEGA RODICA
12	Ingrijitoare			G	1	vacant

COMPARTIMENT DIETETICA - 2 POSTURI

1	Asistent medical		principal	PL	1	ALBU ECATERINA DANIELA
2	Asistent medical		principal	S	1	NICOARA LIVIA MARIA

CABINET ASISTENTA SOCIALA - 1 POST

1	Sociolog			S	1	BUCERZAN ANDREEA MARIANA
---	----------	--	--	---	---	--------------------------

STATIE DE STERILIZARE DESEURI MEDICALE - 1 POST

1	Muncitor calif. (electromecanic)		I		1	CIRES DORIN SORIN
---	----------------------------------	--	---	--	---	-------------------

COMPARTIMENT INTERNARI-EXTERNARI - 7 POSTURI

1	Muncitor calificat (garderobier)	IV	1	BEIAN MARIANA
2	Muncitor calificat (garderobier)	IV	1	JAKAB EDITH
3	Registrator medical	principal	1	BAIDAN MIRELA
4	Registrator medical	principal	1	FILIMON ADRIANA
5	Registrator medical	principal	1	IOVAN MARIA RODICA
6	Registrator medical	M	1	vacant
7	Ingrijitoare	G	1	vacant

SERVIUL FINANCIAR CONTABILITATE - 9 POSTURI

1	Sef serviciu	II	1	MOLDOVAN CECILIA
2	Economist	I	1	CIORA MARIA
3	Economist	I	1	POPA RAMONA ELENA
4	Economist	IA	1	DOBREI IOANA DIANA DOMENIQUE
5	Economist	IA	1	TOMA CLAUDIA TEODORA
6	Economist	IA	1	vacant
7	Casier	M	1	FILIP ANGELICA
8	Contabil	IA	1	PIRVA LIDIA
9	Contabil	IA	1	SUBA ELENA

BIROU ACHIZITII - 6 POSTURI

1	Sef birou deleg.	II	1	NEGREA MIHAELA LILIANA
2		IA	1	PALKO MELINDA IULIA
3		IA	1	VLASIN AIDA NICOLETA
4		II	1	OLTEAN ARTIMIZA
5		II	1	FODOR IOANA
6		IA	1	vacant temporar

BIROU DE MANAGEMENT AL CALITATII - 6 POSTURI

1	Sef birou deleg.	II	1	TIF MIHAELA
2	Medic specialist	S	1	ROMOSAN OANA GEORGIANA
3	Consilier juridic	II	1	COTARLEA ADRIAN
4	Economist	I	1	vacant temporar
5	Economist	IA	1	vacant
6	Referent de specialitate	III	1	NEAGU STEFANIA VERONICA

COMPARTIMENT JURIDIC - 2 POSTURI

1	Consilier juridic	IA	1	BARTAN IULIA
2	Consilier juridic	IA	1	BERCEANU GABRIEL

COMPARTIMENT AUDIT PUBLIC INTERN - 2 POSTURI

1	Economist	IA	1	CARMAZAN VERGINICA AMALIA
2	Economist	IA	1	POPA COSMIN OVIDIU

COMPARTIMENT RELATII CU PUBLICUL - 2 POSTURI

1	Consilier	I	S	1	RUNCAN LUMINITA TEODORA
2	Economist	IA	S	1	vacant

COMPARTIMENT INTERN DE PREVENIRE SI PROTECTIE - 1.5 POSTURI

1	Inginer	IA	S	1	IACOBESCU MARIUS
2	Subinginer	I	SSD	0,5	ROMOSAN ADRIANA

COMPARTIMENT TEHNIC - 1.5 POST

1	Subinginer	I	SSD	0,5	ROMOSAN ADRIANA
2	Inginer	I	S	1	vacant

SERVICIUL RUNOS - 8 POSTURI

1	Sef serviciu	II	S	1	SIRBU NICODINA MARIANA
2	Economist	IA	S	1	MUTIU LIZETA LIA
3	Inginer	IA	S	1	IORDACHE ADRIANA DANA
4	Inginer	IA	S	1	PARVA NELI GABRIELA
5	Inginer	IA	S	1	ZSOK DANIELA GEORGETA
6	Referent de specialitate	I	S	1	BOTA LILIANA VIOLETA
7	Referent	IA	M	1	PETRICA ELEONORA CRISTINA
8	Referent	IA	SSD	1	MARGINEAN SOFIA

SERVICIUL INFORMATICA SI STATISTICA MEDICALA - 19 POSTURI

1	Sef serviciu	II	S	1	LUCA ECATERINA RODICA
2	Analist-programator	IA	S	1	TRIF DANA
3	Economist	IA	S	1	RAILEANU MIHAELA LUMINITA
4	Informatician	I	SSD	1	OANA MIHAELA
5	Analist-programator aj.	IA	M	1	GRECU PAVELINA
6	Economist	II	S	1	CRACIU ROXANA LACRIMIOARA
7	Operator, controlor date	I	M	1	CODEESCU VALENTIN
8	Operator, controlor date	I	M	1	DRON GEORGETA BEATRICE
9	Operator, controlor date	I	M	1	PETCA DANIELA
10	Operator, controlor date	I	M	1	SZEGEDI IULIA ELENA
11	Operator, controlor date	III	M	1	UNGUR DIANA ELENA
12	Registrator medical	principal	M	1	BOGHIU DOINITA
13	Registrator medical	principal	M	1	MAROSAN IBOLYA
14	Registrator medical	principal	M	1	MATES ELENA
15	Registrator medical	M	M	1	TOMUTA DORICA
16	Statistician medical	principal	M	1	DARIE MARIA
17	Statistician medical	M	M	1	PETRIC NICULINA CLAUDIA
18	Statistician medical	M	M	1	SORCA RAMONA CRISTINA
19	Statistician medical	M	M	1	DANCIU BIANCA LIGINIA

SERVICIUL ADMINISTRATIV - 50 POSTURI

1	Sef serviciu		II	S	1	LUDOSEAN IOAN
---	--------------	--	----	---	---	---------------

COMPARTIMENT FUNCTIONARI ADMINISTRATIVI - 17 POSTURI

2	Inginer		IA	S	1	DEACONU LAURIAN-ALIN
3	Preot		I	S	1	VOIVOZEANU CONSTANTIN
4	Consilier		II	S	1	MORAR RAZVAN
5	Arhivar			M	1	HORVATH MARIANA
6	Functionar			M	1	GHIARA IONEL MIRCEA
7	Referent		II	M	1	vacant
8	Referent		IA	M	1	STANILA CARMEN
9	Ingrijitoare			G	1	IVASCAU VIORICA
10	Muncitor necalificat		I		1	SINA VASILE
11	Muncitor necalificat		I		1	VARGA EVA
12	Muncitor calificat (telefonist)		III		1	JULA LILIANA MARIOARA
13	Muncitor calificat (telefonist)		III		1	MIHUT FELICIA
14	Muncitor calificat (telefonist)		III		1	MOCAN AURA MIRELA
15	Muncitor calificat (telefonist)		III		1	MOCANU MONICA
16	Muncitor calificat (telefonist)		III		1	TRIF LILIANA
17	Ingrijitoare			G	1	vacant
18	Ingrijitoare			G	1	vacant

BLOC ALIMENTAR - 15 POSTURI

19	Muncitor calificat (bucatar)		II		1	CASALEAN MARITI
20	Muncitor calificat (bucatar)		III		1	DOLCESCU MARIOARA
21	Muncitor calificat (bucatar)		III		1	DUMITRASCU VOICHITA
22	Muncitor calificat (bucatar)		III		1	MODREA LILIANA
23	Muncitor calificat (bucatar)		III		1	ONET FLORICA
24	Muncitor calificat (bucatar)		IV		1	BUGARIU VICTORIA
25	Muncitor calificat (bucatar)		IV		1	POP SONIA
26	Muncitor calificat (bucatar)		IV		1	ROMAN TITIANA
27	Muncitor calificat (bucatar)		IV		1	SIMOC MARIANA
28	Muncitor calificat (bucatar)		IV		1	SZATMARI OTTO
29	Muncitor calificat (bucatar)		IV		1	UNGUREANU RODICA
30	Muncitor necalificat		I		1	CRISAN PETRU DORIN
31	Muncitor necalificat		I		1	RANESCU SAVETA
32	Muncitor calificat (bucatar)		III		1	vacant
33	Muncitor calificat (bucatar)		III		1	vacant

SPALATORIA SPITAL -16 POSTURI

34	Magaziner			M	1	MIRCE LAURA
35	Muncitor calificat (lenjereasa)	II			1	ILLES VOICHTA
36	Muncitor calificat (lenjereasa)	II			1	KATO EVA
37	Muncitor calificat (lenjereasa)	II			1	SORINCA LIVIA
38	Spalatoreasa			G	1	BORCA FLOARE
39	Spalatoreasa			G	1	BURZ MARIA
40	Spalatoreasa			G	1	CIORAN GENA
41	Spalatoreasa			G	1	CIUCULESCU MARIA
42	Spalatoreasa			G	1	DEMIAN EMILIA
43	Spalatoreasa			G	1	FLIJERAS EUGENIA
44	Spalatoreasa			G	1	GRUESCU GEANINA
45	Spalatoreasa			G	1	IACOB ANA
46	Spalatoreasa			G	1	JOSAN SOFIA
47	Spalatoreasa			G	1	MURESAN ELENA
48	Spalatoreasa				1	vacant
49	Spalatoreasa			G	1	vacant

BIROU INTRETINERE SI REPARATII (ATELIER) - 46 POSTURI

1	Sef birou		I	M	1	NISTOR OCTAVIAN
---	-----------	--	---	---	---	-----------------

ECHIPA DE INTRETINERE A INSTALATIILOR DE APA SI INCALZIRE - 21 POSTURI

2	Muncitor calificat (foclist)	II			1	PREJBAN ARDELEAN
3	Muncitor calificat (foclist)	III			1	COSTEA FLORIN PETRU
4	Muncitor calificat (foclist)	III			1	JUDE CORNEL
5	Muncitor calificat (foclist)	III			1	LITA IULIAN
6	Muncitor calificat (foclist)	III			1	MOLNAR LEVENTE LEHEL
7	Muncitor calificat (foclist)	III			1	STINGA GABRIEL VASILE
8	Muncitor calificat (foclist)	III			1	TODERAS PAUL
9	Muncitor calificat (foclist)	III			1	CACEU-BULFTEA MARIAN
10	Muncitor calificat (foclist)	IV			1	ROMAN IOAN
11	Muncitor calificat (instalator)	I			1	BURIAN ALEXANDRU
12	Muncitor calificat (instalator)	I			1	JANOS STEFAN
13	Muncitor calificat (instalator)	I			1	MACARIE EMIL
14	Muncitor calificat (instalator)	I			1	MORAR NICOLAE
15	Muncitor calificat (instalator)	I			1	PROTOP DANIEL
16	Muncitor calificat (instalator)	I			1	VACARI DOREL NICOLAE
17	Muncitor calificat (instalator)	II			1	SAVA IONEL
18	Muncitor calif. (instalator gaze)	I			1	NAN VIOREL
19	Muncitor calif. (instalator gaze)	III			1	MAGDA SERGIU NICOLAE
20	Muncitor calificat (foclist)	II			1	vacant
21	Muncitor calificat (instalator)	I			1	vacant
22	Muncitor calificat (instalator)	II			1	vacant

ECHIPA DE LACATUSI SI ELECTRICIENI - 12 POSTURI

23	Muncitor calificat (electrician)	I	1	ARDELEAN DOINA
24	Muncitor calificat (electrician)	I	1	BUDAU IOAN
25	Muncitor calificat (electrician)	I	1	HANCILA LIVIU
26	Muncitor calificat (electrician)	I	1	JEICAN IOAN
27	Muncitor calificat (electrician)	I	1	PARPALEA STEFAN
28	Muncitor calif. (lacatus mecanic)	I	1	BUDA PETRICA NELU
29	Muncitor calif. (lacatus mecanic)	I	1	PURDA DANIEL TRAIAN
30	Muncitor calif. (lacatus mecanic)	I	1	SIRBU IOSIF
31	Muncitor calif. (lacatus mecanic)	II	1	IOANI NICOLAE AUREL
32	Muncitor calif. (lacatus mecanic)	III	1	POPA LUCIAN
33	Muncitor calif. (lacatus mecanic)	II	1	vacant
34	Muncitor calificat (electrician)	I	1	vacant
35	Muncitor calificat (electrician)	I	1	vacant

ECHIPA DE REPARATII - 5 POSTURI

36	Muncitor calificat (sudor)	III	1	VINERSAR DANIEL STEFAN
37	Muncitor calificat (tamplar)	I	1	TUDOR IULIAN
38	Muncitor calificat (zugrav)	I	1	MUNTEAN EMIL
39	Muncitor calificat (zidar)	I	1	vacant
40	Muncitor calificat (zugrav)	II	1	vacant

ECHIPA DE DESERVIRE A LIFTURILOR - 6 POSTURI

41	Muncitor calificat (liftier)	IV	1	AVRAM DANIELA VIOLETA
42	Muncitor calificat (liftier)	IV	1	BOLDEANU VOICHITA
43	Muncitor calificat (liftier)	IV	1	LUCHIN LIDIA
44	Muncitor calificat (liftier)	IV	1	vacant
45	Muncitor calificat (liftier)	IV	1	vacant
46	Muncitor calificat (liftier)	IV	1	vacant

BIROU TRANSPORT APROVIZIONARE - 13 POSTURI

1	Sef birou deleg.		II	M	1	DINIS EMILIA
2	Magaziner			M	1	DEMIAN MEDELA
3	Magaziner			M	1	MILITARU LAURENTIU
4	Referent		IA	M	1	SELAR SIMONA RODICA
5	Referent		II	M	1	HANCILA CORNELIA ELENA
6	Magaziner			M	1	vacant
7	Muncitor calificat (sofer)		I		1	BUFTEA PETRU
8	Sofer		I		1	CHILARESCU IOAN
9	Sofer		I		1	DASCAL MARCELA LILIANA
10	Sofer		I		1	STINGA DANIEL
11	Muncitor calificat (sofer)		II		1	DANCILA CLAUDIU DUMITRU
12	Muncitor calificat (sofer)		III		1	vacant
13	Muncitor calificat (sofer)		II		1	vacant

NR. TOTAL FUNCȚII CONTRACTUALE DE CONDUCERE	41
NR. TOTAL FUNCȚII CONTRACTUALE DE EXECUȚIE	1326
NR. TOTAL POSTURI POTRIVIT ART. III ALIN. (2) DIN O.U.G 63/2010	0
NR. TOTAL FUNCȚII ÎN INSTITUȚIE	1367

BIROU TRANSPORT APROVIZIONARE - 13 POSTURI

1	Sef birou deleg.		II	M	1	DINIS EMILIA
2	Magaziner			M	1	DEMIAN MEDELA
3	Magaziner			M	1	MILITARU LAURENTIU
4	Referent		IA	M	1	SELAR SIMONA RODICA
5	Referent		II	M	1	HANCILA CORNELIA ELENA
6	Magaziner			M	1	vacant
7	Muncitor calificat (sofer)		I		1	BUFTEA PETRU
8	Sofer		I		1	CHILARESCU IOAN
9	Sofer		I		1	DASCAL MARCELA LILIANA
10	Sofer		I		1	STINGA DANIEL
11	Muncitor calificat (sofer)		II		1	DANCILA CLAUDIU DUMITRU
12	Muncitor calificat (sofer)		III		1	vacant
13	Muncitor calificat (sofer)		II		1	vacant

NR. TOTAL FUNCȚII CONTRACTUALE DE CONDUCERE	41
NR. TOTAL FUNCȚII CONTRACTUALE DE EXECUȚIE	1326
NR. TOTAL POSTURI POTRIVIT ART. III ALIN. (2) DIN O.U.G 63/2010	0
NR. TOTAL FUNCȚII ÎN INSTITUȚIE	1367

MANAGER

Laza Călin Mircea

